

MAA591Mi21

Monoclonal Antibody to Proliferating Cell Nuclear Antigen (PCNA)

Organism Species: *Homo sapiens* (Human), *Mus musculus* (Mouse), *Rattus norvegicus* (Rat), *Canis familiaris*; Canine (Dog), *Sus scrofa*; Porcine (Pig)

Instruction manual

FOR RESEARCH USE ONLY

NOT FOR USE IN CLINICAL DIAGNOSTIC PROCEDURES

13th Edition (Revised in Aug, 2023)

[PROPERTIES]

Source: Monoclonal antibody preparation

Host: Mouse

Antibody isotype: IgG2b Kappa

Purification: Protein A + Protein G affinity chromatography

Clone number: C4

Traits: Liquid

Concentration: 500µg/mL

UOM: 1

Cross Reactivity:

Applications: WB; IHC; ICC; IP.

[IMMUNOGEN]

Immunogen: Recombinant PCNA (Leu6~Ser261) expressed in *E.coli*

Accession No.: RPA591Mi01

[APPLICATIONS]

Western blotting: 0.01-2µg/mL;

Immunohistochemistry: 5-20µg/mL;

Immunocytochemistry: 5-20µg/mL;

Optimal working dilutions must be determined by end user.

[FORMULATION]

Form & Buffer: Supplied as solution form in 0.01M PBS, pH7.4, containing 0.05% Proclin-300, 50% glycerol.

[QUALITY CONTROL]

Content: The quality control contains recombinant PCNA disposed in loading buffer.

Usage: 10uL per well when 3,3'-Diaminobenzidine(DAB) as the substrate.

5uL per well when used in enhanced chemiluminescent (ECL).

Note: The quality control is specifically manufactured as the positive control. Not used for other

purposes.

Loading Buffer: 100mM Tris (pH6.8), 1% SDS, 150mM NaCl, 50% glycerol, 0.02% BPB, 50mM DTT and 0.02% NaN₃.

[STORAGE AND STABILITY]

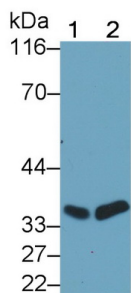
Storage: Avoid repeated freeze/thaw cycles.

Store at 4°C for frequent use.

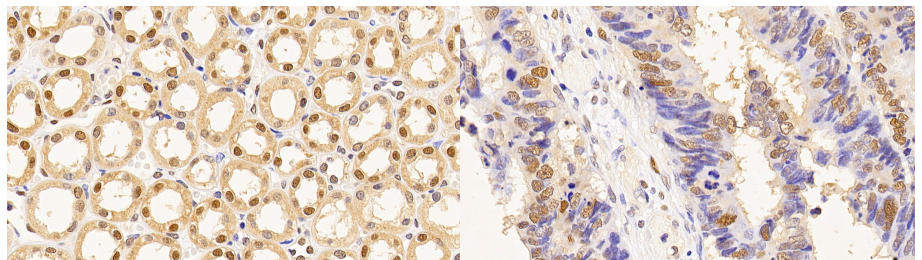
Aliquot and store at -20°C for 24 months.

Stability Test: The thermal stability is described by the loss rate. The loss rate was determined by accelerated thermal degradation test, that is, incubate the protein at 37°C for 48h, and no obvious degradation and precipitation were observed. The loss rate is less than 5% within the expiration date under appropriate storage condition.

[IDENTIFICATION]

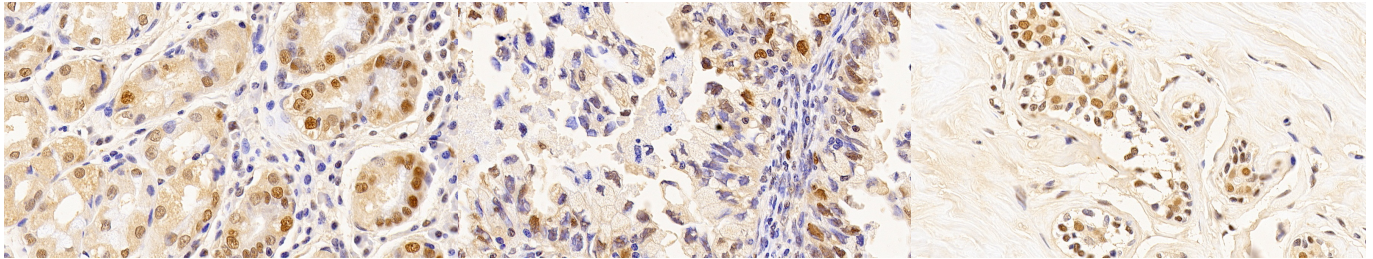


Western Blot; Sample: Lane1: Rat Spleen lysate; Lane2: 293T cell lysate
 Primary Ab: 0.01µg/ml Mouse Anti-Multi-species PCNA Antibody Second Ab: 0.2µg/mL HRP-Linked Caprine Anti-Mouse IgG Polyclonal Antibody (Catalog: SAA544Mu19)



DAB staining on IHC-P; Sample: Human Kidney Tissue; Primary Ab: 20ug/ml Mouse Anti-Multi-species PCNA Antibody Second Ab: 2µg/mL HRP-Linked Caprine Anti-Mouse IgG Polyclonal Antibody (Catalog: SAA544Mu19)

DAB staining on IHC-P; Sample: Human Colorectal cancer Tissue; Primary Ab: 20ug/ml Mouse Anti-Multi-species PCNA Antibody Second Ab: 2µg/mL HRP-Linked Caprine Anti-Mouse IgG Polyclonal Antibody (Catalog: SAA544Mu19)



DAB staining on IHC-P;

Sample: Human Stomach Tissue;

Primary Ab: 20ug/ml Mouse Anti-Multi-species PCNA Antibody

Second Ab: 2µg/mL HRP-Linked

Caprine Anti-Mouse IgG Polyclonal Antibody

(Catalog: SAA544Mu19)

DAB staining on IHC-P;

Sample: Human Endometrial cancer Tissue;

Primary Ab: 20ug/ml Mouse Anti-Multi-species PCNA Antibody

Second Ab: 2µg/mL HRP-Linked

Caprine Anti-Mouse IgG Polyclonal Antibody

(Catalog: SAA544Mu19)

DAB staining on IHC-P;

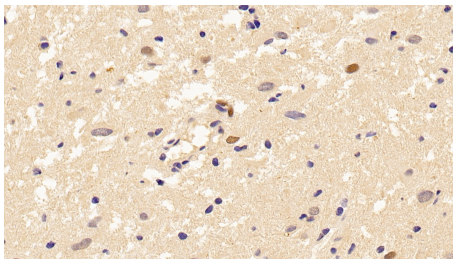
Sample: Human Mammary gland Tissue;

Primary Ab: 20ug/ml Mouse Anti-Multi-species PCNA Antibody

Second Ab: 2µg/mL HRP-Linked

Caprine Anti-Mouse IgG Polyclonal Antibody

(Catalog: SAA544Mu19)



DAB staining on IHC-P;

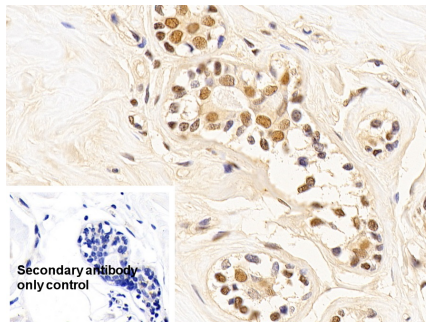
Sample: Human Cerebrum Tissue;

Primary Ab: 20ug/ml Mouse Anti-Multi-species PCNA Antibody

Second Ab: 2µg/mL HRP-Linked

Caprine Anti-Mouse IgG Polyclonal Antibody

(Catalog: SAA544Mu19)



DAB staining on IHC-P;

Sample: Human Mammary gland Tissue

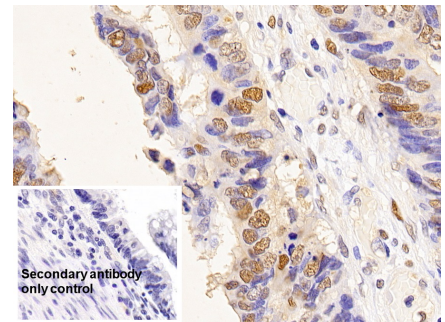
Primary Ab: 20µg/ml Mouse Anti-Multi-species PCNA Antibody

Control: Used PBS instead of primary antibody

Second Ab: 2µg/ml HRP-Linked

Caprine Anti-Mouse IgG Polyclonal Antibody

(Catalog: SAA544Mu19)



DAB staining on IHC-P;

Sample: Human Colorectal cancer Tissue

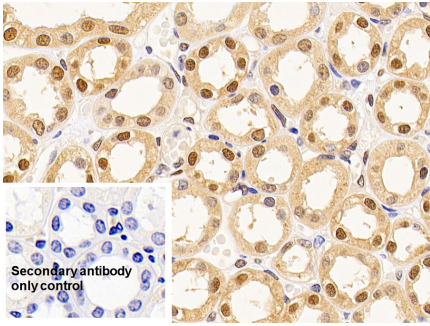
Primary Ab: 20µg/ml Mouse Anti-Multi-species PCNA Antibody

Control: Used PBS instead of primary antibody

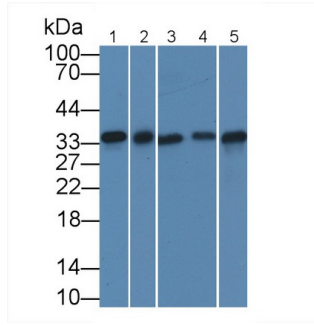
Second Ab: 2µg/ml HRP-Linked

Caprine Anti-Mouse IgG Polyclonal Antibody

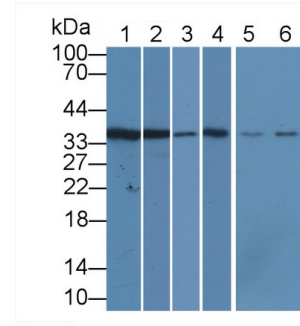
(Catalog: SAA544Mu19)



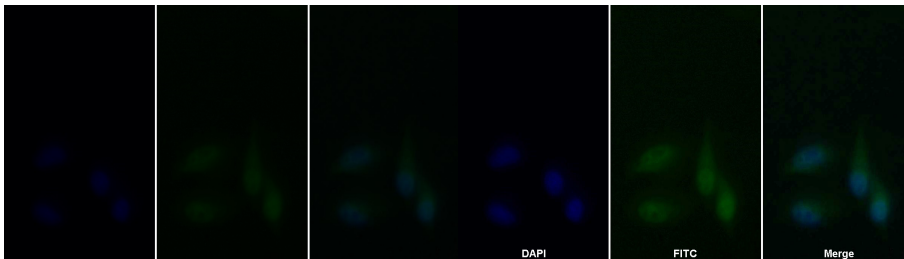
DAB staining on IHC-P;
 Sample: Human Kidney Tissue
 Primary Ab: 20µg/ml Mouse Anti-Multi-species PCNA Antibody
 Control: Used PBS instead of primary antibody
 Second Ab: 2µg/ml HRP-Linked Caprine Anti-Mouse IgG Polyclonal Antibody
 (Catalog: SAA544Mu19)



Western Blot; Sample: Lane1: MCF7 cell lysate; Lane2: ECV304 cell lysate; Lane3: Mouse Testis lysate; Lane4: Mouse Small Intestine lysate; Lane5: Mouse Thymus lysate
 Primary Ab: 0.5µg/ml Mouse Anti-Multi-species PCNA Antibody
 Second Ab: 0.2µg/mL HRP-Linked Caprine Anti-Mouse IgG Polyclonal Antibody
 (Catalog: SAA544Mu19)



Western Blot; Sample: Lane1: Rat Spleen lysate; Lane2: Porcine Spleen lysate; Lane3: Bovine Heart lysate; Lane4: Canine Liver lysate; Lane5: Cavia Spleen lysate; Lane6: Caprine Cerebrum lysate
 Primary Ab: 2µg/ml Mouse Anti-Multi-species PCNA Antibody
 Second Ab: 0.2µg/mL HRP-Linked Caprine Anti-Mouse IgG Polyclonal Antibody
 (Catalog: SAA544Mu19)



FITC staining on IF;
 Sample: Human MCF7 cell;
 Primary Ab: 20µg/ml Mouse Anti-Multi-species PCNA Antibody
 Second Ab: 0.75µg/ml FITC-Linked Caprine Anti-Mouse IgG Polyclonal Antibody
 (Catalog: SAA544Mu18)

Sample: MCF7 cell
 Primary Ab: 20µg/ml Mouse Anti-Multi-species PCNA Antibody
 Second Ab: 2µg/ml FITC-Linked Caprine Anti-Mouse IgG Polyclonal Antibody
 (Catalog: SAA544Mu11)

[IMPORTANT NOTE]

The kit is designed for research use only, we will not be responsible for any issue if the kit was used in clinical diagnostic or any other procedures.