

MAB030Hu21

Monoclonal Antibody to Protein Tyrosine Phosphatase Receptor Type C (CD45)

Organism Species: *Homo sapiens (Human)*

Instruction manual

FOR RESEARCH USE ONLY

NOT FOR USE IN CLINICAL DIAGNOSTIC PROCEDURES

13th Edition (Revised in Aug, 2023)

[PROPERTIES]

Source: Monoclonal antibody preparation

Host: Mouse

Antibody isotype: IgG1 Kappa

Purification: Protein A + Protein G affinity chromatography

Clone number: C3

Traits: Liquid

Concentration: 1mg/mL

UOM: 20µL

Cross Reactivity: N/A

Applications: WB; IHC; ICC; IP.

[IMMUNOGEN]

Immunogen: Recombinant CD45 (Asp193~Lys575) expressed in *E.coli*

Accession No.: RPB030Hu01

[APPLICATIONS]

Western blotting: 0.01-2µg/mL;

Immunohistochemistry: 5-30µg/mL;

Immunocytochemistry: 5-30µg/mL;

Optimal working dilutions must be determined by end user.

[FORMULATION]

Form & Buffer: Supplied as solution form in PBS, pH7.4, containing 0.02% NaN₃, 50% glycerol.

[STORAGE AND STABILITY]

Storage: Avoid repeated freeze/thaw cycles.

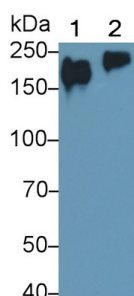
Store at 4°C for frequent use.

Aliquot and store at -20°C for 24 months.

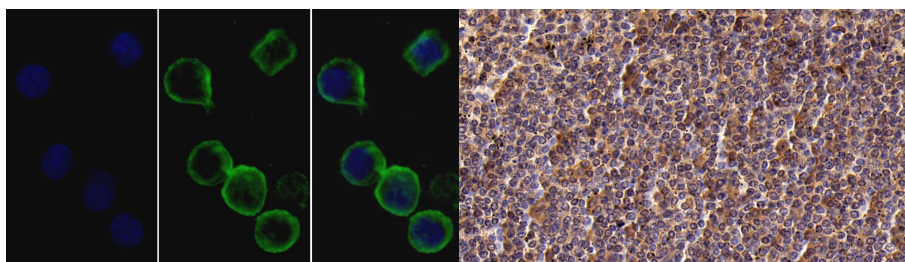
Stability Test: The thermal stability is described by the loss rate. The loss rate was determined

by accelerated thermal degradation test, that is, incubate the protein at 37°C for 48h, and no obvious degradation and precipitation were observed. The loss rate is less than 5% within the expiration date under appropriate storage condition.

[IDENTIFICATION]

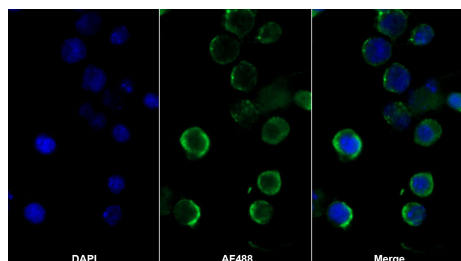


Western Blot; Sample: Lane1: Jurkat cell lysate; Lane2: THP1 cell lysate
Primary Ab: 0.1 μ g/ml Mouse Anti-Human PTPRC Antibody Second Ab: 0.2 μ g/mL HRP-Linked Caprine Anti-Mouse IgG Polyclonal Antibody
(Catalog: SAA544Mu19)



FITC staining on IF; Sample: Human Jurkat cell; Primary Ab: 30 μ g/ml Mouse Anti-Human PTPRC Antibody Second Ab: 4 μ g/ml FITC-Linked Caprine Anti-Mouse IgG Polyclonal Antibody
(Catalog: SAA544Mu18)

DAB staining on IHC-P; Sample: Human Spleen Tissue; Primary Ab: 30 μ g/ml Mouse Anti-Human PTPRC Antibody Second Ab: 2 μ g/mL HRP-Linked Caprine Anti-Mouse IgG Polyclonal Antibody
(Catalog: SAA544Mu19)



AF488 staining on IF;

Sample: Jurkat cell

Primary Ab: 20 μ g/ml Mouse Anti-Human PTPRC Antibody
Second Ab: 2 μ g/ml AF488-Linked Caprine Anti-Mouse IgG Polyclonal Antibody
(Catalog: SAA544Mu11)

[IMPORTANT NOTE]



The kit is designed for research use only, we will not be responsible for any issue if the kit was used in clinical diagnostic or any other procedures.