

MAD869Ra21

Monoclonal Antibody to Relaxin 3 (RLN3)

Organism Species: *Rattus norvegicus* (Rat)

Instruction manual

FOR RESEARCH USE ONLY

NOT FOR USE IN CLINICAL DIAGNOSTIC PROCEDURES

13th Edition (Revised in Aug, 2023)

[PROPERTIES]

Source: Monoclonal antibody preparation

Host: Mouse

Antibody isotype: IgG2b Kappa

Purification: Protein A + Protein G affinity chromatography

Clone number: D10

Traits: Liquid

Concentration: 1mg/ml

UOM: 100µl

Cross Reactivity: Human.

Applications: WB,IHC

[IMMUNOGEN]

Immunogen: Recombinant RLN3 (Met1~Cys140 (Accession # Q8BFS3)) expressed in *E.coli*

Accession No.: RPD869Ra01

[APPLICATIONS]

Western blotting: 0.5-6µg/mL

Immunohistochemistry: 5-20µg/mL

Immunocytochemistry: 5-20µg/mL

Optimal working dilutions must be determined by end user.

[FORMULATION]

Form & Buffer: Supplied as solution form in 0.01M PBS, pH7.4, containing 0.05% Proclin-300, 50% glycerol.

[STORAGE AND STABILITY]

Storage: Avoid repeated freeze/thaw cycles.

Store at 4°C for frequent use.

Aliquot and store at -20°C for 24 months.

Stability Test: The thermal stability is described by the loss rate. The loss rate was determined

by accelerated thermal degradation test, that is, incubate the protein at 37°C for 48h, and no obvious degradation and precipitation were observed. The loss rate is less than 5% within the expiration date under appropriate storage condition.

[IDENTIFICATION]

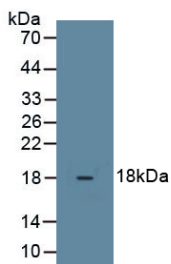
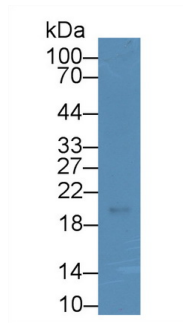
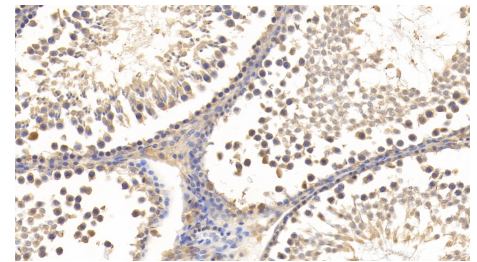


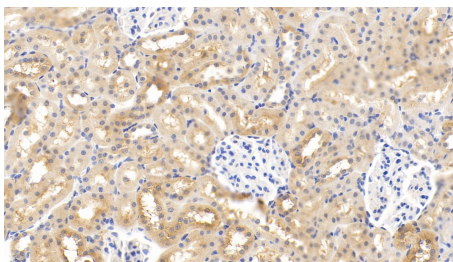
Figure. Western Blot; Sample: Recombinant RLN3, Rat.



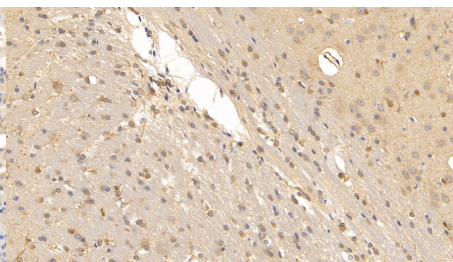
Western Blot; Sample: U87MG cell lysate
 Primary Ab: 6µg/ml Mouse Anti-Rat RLN3 Antibody
 Second Ab: 0.2µg/mL HRP-Linked Caprine Anti-Mouse IgG Polyclonal Antibody
 (Catalog: SAA544Mu19)



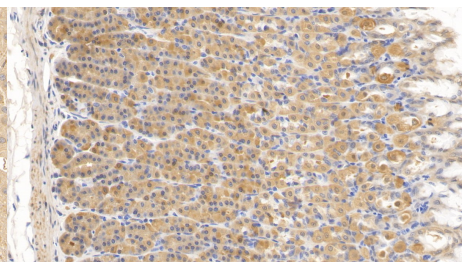
DAB staining on IHC-P;
 Sample: Rat Testis Tissue;
 Primary Ab: 10µg/ml Mouse Anti-Rat RLN3 Antibody
 Second Ab: 2µg/mL HRP-Linked Caprine Anti-Mouse IgG Polyclonal Antibody
 (Catalog: SAA544Mu19)



DAB staining on IHC-P;
 Sample: Rat Kidney Tissue;
 Primary Ab: 10µg/ml Mouse Anti-Rat RLN3 Antibody
 Second Ab: 2µg/mL HRP-Linked Caprine Anti-Mouse IgG Polyclonal Antibody
 (Catalog: SAA544Mu19)



DAB staining on IHC-P;
 Sample: Rat Cerebrum Tissue;
 Primary Ab: 10µg/ml Mouse Anti-Rat RLN3 Antibody
 Second Ab: 2µg/mL HRP-Linked Caprine Anti-Mouse IgG Polyclonal Antibody
 (Catalog: SAA544Mu19)



DAB staining on IHC-P; Sample: Rat Stomach Tissue; Primary Ab: 10µg/ml Mouse Anti-Rat RLN3 Antibody Second Ab: 2µg/mL HRP-Linked Caprine Anti-Mouse IgG Polyclonal Antibody
 (Catalog: SAA544Mu19)

[IMPORTANT NOTE]

The kit is designed for research use only, we will not be responsible for any issue if the kit was used in clinical diagnostic or any other procedures.