

MAA394Ra21

Monoclonal Antibody to Tissue Factor Pathway Inhibitor (TFPI)

Organism Species: *Rattus norvegicus* (Rat)

Instruction manual

FOR RESEARCH USE ONLY

NOT FOR USE IN CLINICAL DIAGNOSTIC PROCEDURES

13th Edition (Revised in Aug, 2023)

[PROPERTIES]

Source: Monoclonal antibody preparation

Host: Mouse

Antibody isotype: IgG1 Kappa

Purification: Protein A + Protein G affinity chromatography

Clone number: 1#

Traits: Liquid

Concentration: 1mg/ml

UOM: 200µl

Cross Reactivity: Human

Applications: WB,IHC

[IMMUNOGEN]

Immunogen: Recombinant TFPI (Leu29~His302) expressed in *E.coli*

Accession No.: RPA394Ra01

[APPLICATIONS]

Western blotting: 0.01-5µg/mL;

Immunohistochemistry: 5-20µg/mL;

Optimal working dilutions must be determined by end user.

[FORMULATION]

Form & Buffer: Supplied as solution form in PBS, pH7.4, containing 0.02% NaN₃, 50% glycerol.

[STORAGE AND STABILITY]

Storage: Avoid repeated freeze/thaw cycles.

Store at 4°C for frequent use.

Aliquot and store at -20°C for 24 months.

Stability Test: The thermal stability is described by the loss rate. The loss rate was determined by accelerated thermal degradation test, that is, incubate the protein at 37°C for 48h, and no

obvious degradation and precipitation were observed. The loss rate is less than 5% within the expiration date under appropriate storage condition.

[IDENTIFICATION]

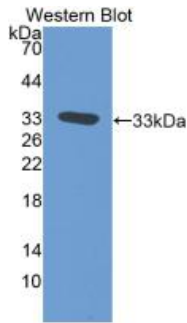
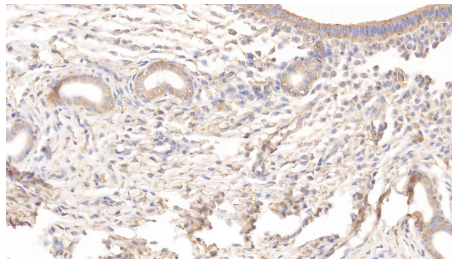
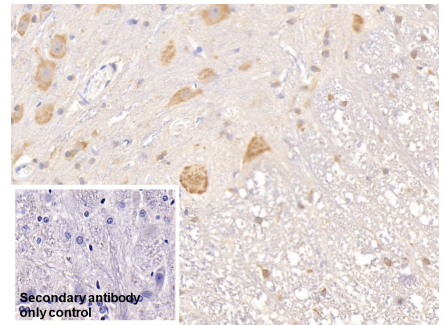


Figure. Western Blot; Sample: Recombinant TFPI, Rat.

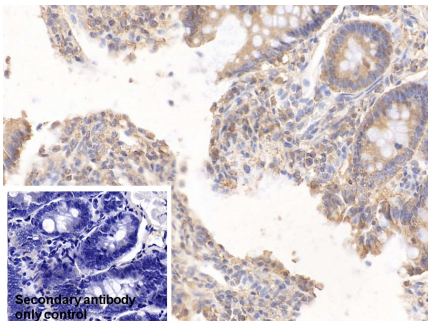


DAB staining on IHC-P; Sample: Rat Oviduct Tissue; Primary Ab: 10µg/ml Mouse Anti-Rat TFPI Antibody Second Ab: 2µg/mL HRP-Linked Caprine Anti-Mouse IgG Polyclonal Antibody (Catalog: SAA544Mu19)

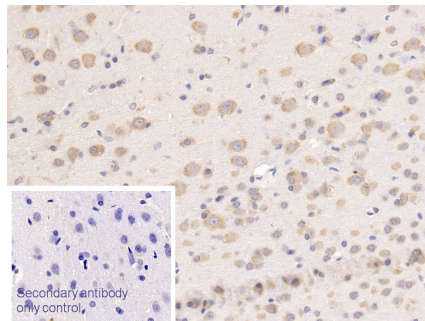


DAB staining on IHC-P; Sample: Rat Spinal cord Tissue; Primary Ab: 10µg/ml Mouse Anti-Rat TFPI Antibody Second Ab: 2µg/mL HRP-Linked Caprine Anti-Mouse IgG Polyclonal Antibody (Catalog: SAA544Mu19)

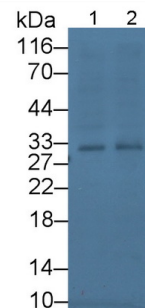
Secondary antibody only control: Used PBS instead of primary antibody , Second Ab: 2µg/mL HRP-Linked Caprine Anti-Mouse IgG Polyclonal Antibody (Catalog: SAA544Mu19)



DAB staining on IHC-P; Sample: Rat Colon Tissue; Primary Ab: 10µg/ml Mouse Anti-Rat



DAB staining on IHC-P; Sample: Rat Cerebrum Tissue; Primary Ab: 10µg/ml Mouse Anti-Rat



Western Blot; Sample: Lane1: HeLa cell lysate; Lane2: HepG2 cell lysate Primary Ab: 5µg/ml Mouse Anti-Rat

TFPI Antibody

Second Ab: 2µg/mL HRP-Linked
 Caprine Anti-Mouse IgG Polyclonal
 Antibody
 (Catalog: SAA544Mu19)

Secondary antibody only control: Used

PBS instead of primary antibody ,
 Second Ab: 2µg/mL HRP-Linked
 Caprine Anti-Mouse IgG Polyclonal
 Antibody
 (Catalog: SAA544Mu19)

TFPI Antibody

Second Ab: 2µg/mL HRP-Linked
 Caprine Anti-Mouse IgG Polyclonal
 Antibody
 (Catalog: SAA544Mu19)

Secondary antibody only control: Used

PBS instead of primary antibody ,
 Second Ab: 2µg/mL HRP-Linked
 Caprine Anti-Mouse IgG Polyclonal
 Antibody
 (Catalog: SAA544Mu19)

TFPI Antibody

Second Ab: 0.2µg/mL HRP-Linked
 Caprine Anti-Mouse IgG Polyclonal
 Antibody
 (Catalog: SAA544Mu19) Selected



Western Blot; Sample: Lane1: Rat
 Serum; Lane2: Rat Lung lysate
 Primary Ab: 3µg/ml Mouse Anti-Rat
 TFPI Antibody
 Second Ab: 0.2µg/mL HRP-Linked
 Caprine Anti-Mouse IgG Polyclonal
 Antibody
 (Catalog: SAA544Mu19) Selected

[IMPORTANT NOTE]

The kit is designed for research use only, we will not be responsible for any issue if the kit was used in clinical diagnostic or any other procedures.