

**MAB040Hu27**

**Monoclonal Antibody to Vimentin (VIM)**

**Organism Species: *Homo sapiens (Human)***

***Instruction manual***

FOR RESEARCH USE ONLY

NOT FOR USE IN CLINICAL DIAGNOSTIC PROCEDURES

---

13th Edition (Revised in Aug, 2023)

**[ PROPERTIES ]**

**Source:** Monoclonal antibody preparation

**Host:** Mouse

**Antibody isotype:** IgG2a Kappa

**Purification:** Protein A + Protein G affinity chromatography

**Clone number:** C13

**Traits:** Liquid

**Concentration:** 1mg/ml

**UOM:** 100µl

**Cross Reactivity:** Rat;Canine;Porcine;Bovine;Gallus

**Applications:** WB; IHC; ICC; IP.

**[ IMMUNOGEN ]**

**Immunogen:** Recombinant VIM (Ser2~Glu466) expressed in *E.coli*

**Accession No.:** RPB040Hu01

**[ APPLICATIONS ]**

Western blotting: 0.01-3µg/mL

Immunohistochemistry: 2-30µg/mL

Immunocytochemistry: 2-30µg/mL

Optimal working dilutions must be determined by end user.

**[ FORMULATION ]**

**Form & Buffer:** Supplied as solution form in PBS, pH7.4, containing 0.02% NaN<sub>3</sub>, 50% glycerol.

**[ STORAGE AND STABILITY ]**

**Storage:** Avoid repeated freeze/thaw cycles.

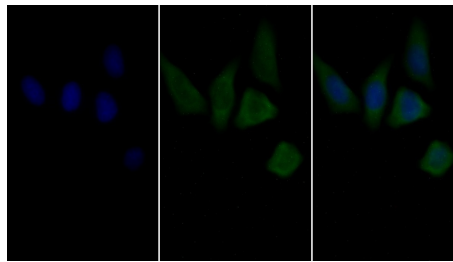
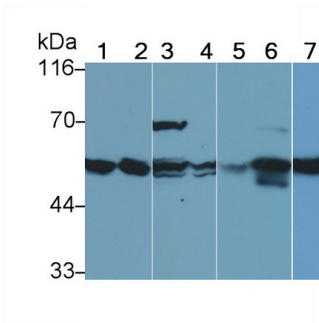
Store at 4°C for frequent use.

Aliquot and store at -20°C for 24 months.

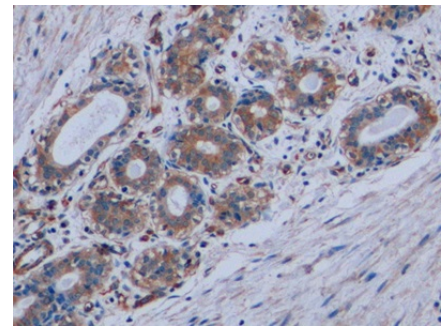
**Stability Test:** The thermal stability is described by the loss rate. The loss rate was determined

by accelerated thermal degradation test, that is, incubate the protein at 37°C for 48h, and no obvious degradation and precipitation were observed. The loss rate is less than 5% within the expiration date under appropriate storage condition.

**[ IDENTIFICATION ]**



FITC staining on IF; Samples: Human



DAB staining on IHC-P;

Western Blot; Sample: Lane1: HeLa cell lysate; Lane2: 293T cell lysate; Lane3: Rat Heart lysate; Lane4: Porcine Heart lysate; Lane5: Canine Heart lysate; Lane6: Bovine Heart lysate; Lane7: Gallus Heart lysate Primary Ab: 0.2µg/ml Mouse Anti-Human VIM Antibody Second Ab: 0.2µg/mL HRP-Linked Caprine A

MCF7 Cells; Primary Ab: 30µg/ml Mouse Anti-Human VIM Antibody Second Ab: 1µg/ml FITC-Linked Caprine Anti-Mouse IgG Polyclonal Antibody (Catalog: SAA544Mu18)

Sample: Human Breast cancer Tissue; Primary Ab: 10µg/ml Mouse Anti-Human VIM Antibody Second Ab: 2µg/mL HRP-Linked Caprine Anti-Mouse IgG Polyclonal Antibody (Catalog: SAA544Mu19)

**[ IMPORTANT NOTE ]**

The kit is designed for research use only, we will not be responsible for any issue if the kit was used in clinical diagnostic or any other procedures.