

PAA376Mu01

Polyclonal Antibody to Actinin Alpha 2 (ACTN2)

Organism Species: *Mus musculus* (Mouse)

Instruction manual

FOR RESEARCH USE ONLY

NOT FOR USE IN CLINICAL DIAGNOSTIC PROCEDURES

13th Edition (Revised in Aug, 2023)

[PROPERTIES]

Source: Polyclonal antibody preparation

Host: Rabbit

Purification: Antigen-specific affinity chromatography followed by Protein A affinity chromatography

Traits: Liquid

Concentration: 0.5mg/mL

UOM: 500µg(1000µL)

Cross Reactivity: Human

Applications: WB; IHC

[IMMUNOGEN]

Immunogen: Recombinant ACTN2 (Met1~His254) expressed in *E.coli*

Accession No.: RPA376Mu01

[APPLICATIONS]

Western blotting: 0.01-2µg/mL;

Immunohistochemistry: 5-20µg/mL;

Optimal working dilutions must be determined by end user.

[FORMULATION]

Form & Buffer: Supplied as solution form in 0.01M PBS, pH7.4, containing 0.05% Proclin-300, 50% glycerol.

[STORAGE AND STABILITY]

Storage: Avoid repeated freeze/thaw cycles.

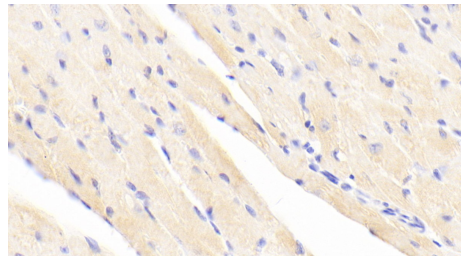
Store at 4°C for frequent use.

Aliquot and store at -20°C for 24 months.

Stability Test: The thermal stability is described by the loss rate. The loss rate was determined by accelerated thermal degradation test, that is, incubate the protein at 37°C for 48h, and no obvious degradation and precipitation were observed. The loss rate is less than 5% within the

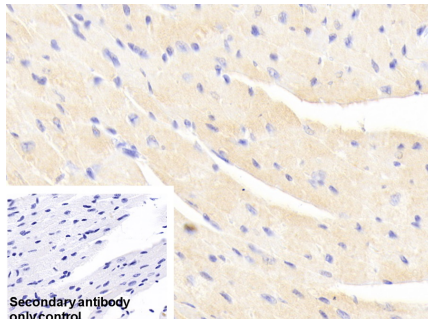
expiration date under appropriate storage condition.

[IDENTIFICATION]



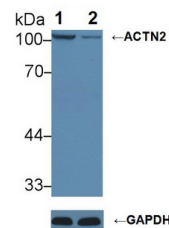
DAB staining on IHC-P; Samples:

Mouse Cardiac Muscle Tissue; Primary
Ab: 20 μ g/ml Rabbit Anti-Mouse ACTN2
Antibody Second Ab: 2 μ g/mL HRP-
Linked Caprine Anti-Rabbit IgG
Polyclonal Antibody (Catalog:
SAA544Rb19)



DAB staining on IHC-P;

Sample: Mouse Cardiac Muscle Tissue
Primary Ab: 20 μ g/ml Rabbit Anti-Mouse
ACTN2 Antibody
Control: Used PBS instead of primary
antibody
Second Ab: 2 μ g/ml HRP-Linked
Caprine Anti-Rabbit IgG Polyclonal
Antibody
(Catalog: SAA544Rb19)



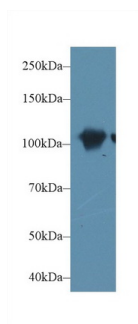
Knockout Varification:

Lane 1: Wild-type HeLa cell lysate;
Lane 2: ACTN2 knockout HeLa cell
lysate;

Predicted MW: 104kDa

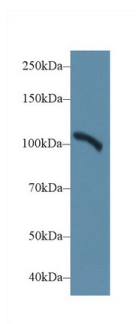
Observed MW: 104kDa

Primary Ab: 1 μ g/ml Rabbit Anti-Mouse
ACTN2 Antibody
Second Ab: 0.2 μ g/mL HRP-Linked
Caprine Anti-Rabbit IgG Polyclonal
Antibody
(Catalog: SAA544Rb19)



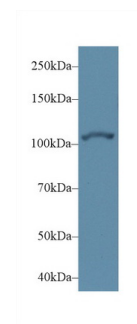
Western Blot; Sample: Mouse Skeletal
muscle lysate;

Primary Ab: 1 μ g/ml Rabbit Anti-Mouse
ACTN2 Antibody
Second Ab: 0.2 μ g/mL HRP-Linked
Caprine Anti-Rabbit IgG Polyclonal
Antibody



Western Blot; Sample: Mouse Lung
lysate;

Primary Ab: 1 μ g/ml Rabbit Anti-Mouse
ACTN2 Antibody
Second Ab: 0.2 μ g/mL HRP-Linked
Caprine Anti-Rabbit IgG Polyclonal
Antibody



Western Blot; Sample: Human HeLa cell
lysate;

Primary Ab: 1 μ g/ml Rabbit Anti-Mouse
ACTN2 Antibody
Second Ab: 0.2 μ g/mL HRP-Linked
Caprine Anti-Rabbit IgG Polyclonal
Antibody

(Catalog: SAA544Rb19)

(Catalog: SAA544Rb19)

(Catalog: SAA544Rb19)

[IMPORTANT NOTE]

The kit is designed for research use only, we will not be responsible for any issue if the kit was used in clinical diagnostic or any other procedures.