

PAA178Hu01

Polyclonal Antibody to Alpha-2-Heremans Schmid Glycoprotein (AHSG)

Organism Species: *Homo sapiens (Human)*

Instruction manual

FOR RESEARCH USE ONLY

NOT FOR USE IN CLINICAL DIAGNOSTIC PROCEDURES

13th Edition (Revised in Aug, 2023)

[PROPERTIES]

Source: Polyclonal antibody preparation

Host: Rabbit

Purification: Antigen-specific affinity chromatography followed by Protein A affinity chromatography

Traits: Liquid

Concentration: 0.5mg/mL

UOM: 100µL

Cross Reactivity: Porcine

Applications: WB; IHC; ICC/IF

[IMMUNOGEN]

Immunogen: Recombinant AHSG (Ala19~Leu300) expressed in *E.coli*

Accession No.: RPA178Hu01

[APPLICATIONS]

Western blotting: 0.01-2µg/mL;

Immunohistochemistry: 5-20µg/mL;

Immunofluorescence: 5-20µg/mL;

Optimal working dilutions must be determined by end user.

[FORMULATION]

Form & Buffer: Supplied as solution form in 0.01M PBS, pH7.4, containing 0.05% Proclin-300, 50% glycerol.

[STORAGE AND STABILITY]

Storage: Avoid repeated freeze/thaw cycles.

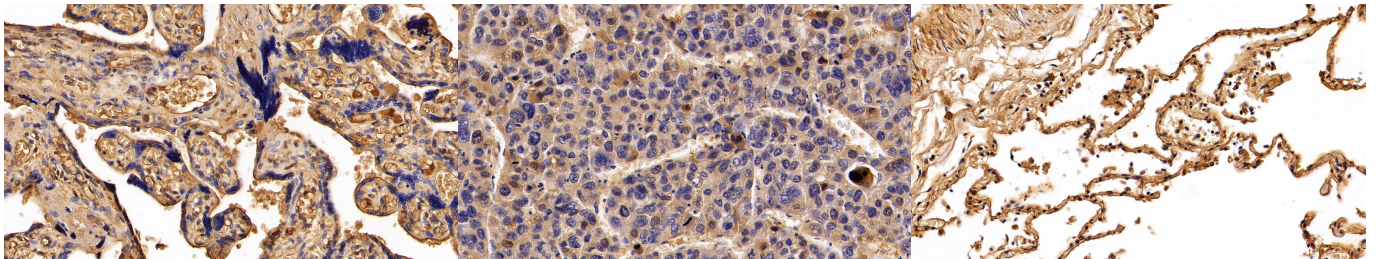
Store at 4°C for frequent use.

Aliquot and store at -20°C for 24 months.

Stability Test: The thermal stability is described by the loss rate. The loss rate was determined by accelerated thermal degradation test, that is, incubate the protein at 37°C for 48h, and no

obvious degradation and precipitation were observed. The loss rate is less than 5% within the expiration date under appropriate storage condition.

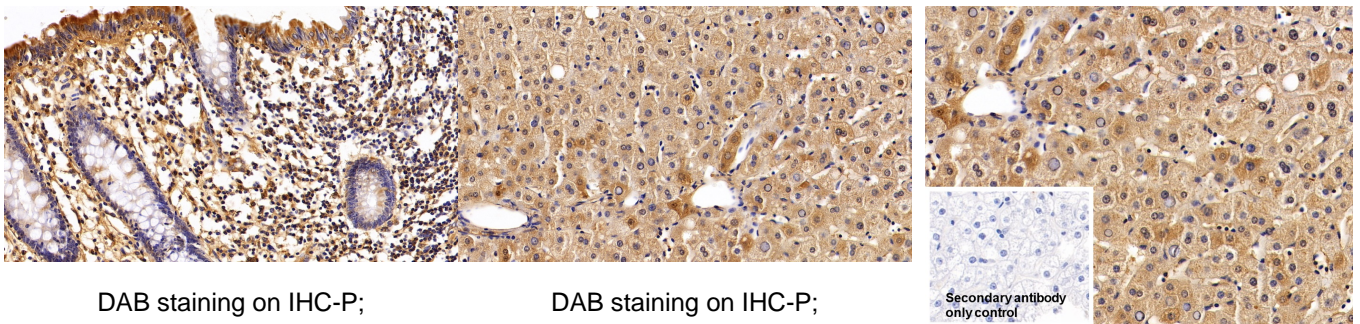
[IDENTIFICATION]



DAB staining on IHC-P;
Sample: Human Placenta Tissue;
Primary Ab: 20ug/ml Rabbit Anti-Human aHSG Antibody
Second Ab: 2µg/mL HRP-Linked Caprine Anti-Rabbit IgG Polyclonal Antibody (Catalog: SAA544Rb19)

DAB staining on IHC-P;
Sample: Human Liver cancer Tissue;
Primary Ab: 20ug/ml Rabbit Anti-Human aHSG Antibody
Second Ab: 2µg/mL HRP-Linked Caprine Anti-Rabbit IgG Polyclonal Antibody (Catalog: SAA544Rb19)

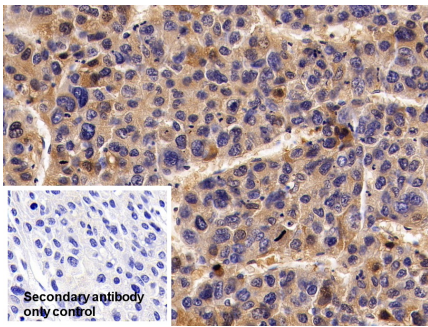
DAB staining on IHC-P;
Sample: Human Lung Tissue;
Primary Ab: 20ug/ml Rabbit Anti-Human aHSG Antibody
Second Ab: 2µg/mL HRP-Linked Caprine Anti-Rabbit IgG Polyclonal Antibody (Catalog: SAA544Rb19)



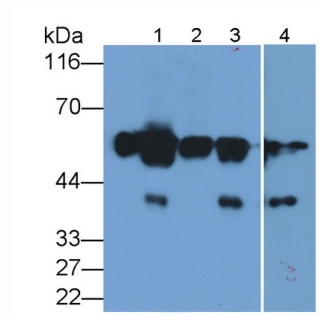
DAB staining on IHC-P;
Sample: Human Colon Tissue;
Primary Ab: 20ug/ml Rabbit Anti-Human aHSG Antibody
Second Ab: 2µg/mL HRP-Linked Caprine Anti-Rabbit IgG Polyclonal Antibody (Catalog: SAA544Rb19)

DAB staining on IHC-P;
Sample: Human Liver Tissue;
Primary Ab: 20ug/ml Rabbit Anti-Human aHSG Antibody
Second Ab: 2µg/mL HRP-Linked Caprine Anti-Rabbit IgG Polyclonal Antibody (Catalog: SAA544Rb19)

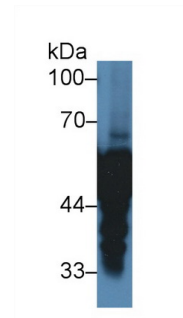
DAB staining on IHC-P;
Sample: Human Liver Tissue
Primary Ab: 20µg/ml Rabbit Anti-Human aHSG Antibody
Control: Used PBS instead of primary antibody
Second Ab: 2µg/ml HRP-Linked Caprine Anti-Rabbit IgG Polyclonal Antibody (Catalog: SAA544Rb19)



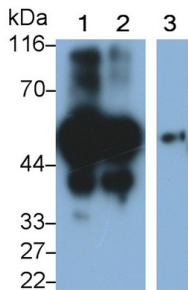
DAB staining on IHC-P;
 Sample: Human Liver cancer Tissue
 Primary Ab: 20µg/ml Rabbit Anti-Human aHSG Antibody
 Control: Used PBS instead of primary antibody
 Second Ab: 2µg/ml HRP-Linked Caprine Anti-Rabbit IgG Polyclonal Antibody
 (Catalog: SAA544Rb19)



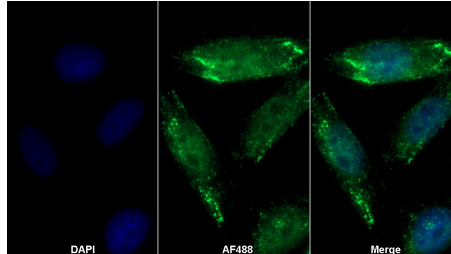
Western Blot; Sample: Lane1: Human Serum; Lane2: Human Lung lysate; Lane3: Human Placenta lysate; Lane4: Human Urine
 Primary Ab: 0.1µg/ml Rabbit Anti-Human aHSG Antibody
 Second Ab: 0.2µg/mL HRP-Linked Caprine Anti-Rabbit IgG Polyclonal Antibody
 (Catalog: SAA544Rb19)



Western Blot; Sample: Human Liver lysate;
 Primary Ab: 2µg/ml Rabbit Anti-Human aHSG Antibody
 Second Ab: 0.2µg/mL HRP-Linked Caprine Anti-Rabbit IgG Polyclonal Antibody
 (Catalog: SAA544Rb19)



Western Blot; Sample: Lane1: Human Serum; Lane2: Human Placenta lysate; Lane3: Porcine Lung lysate
 Primary Ab: 0.1µg/ml Rabbit Anti-Human aHSG Antibody
 Second Ab: 0.2µg/mL HRP-Linked Caprine Anti-Rabbit IgG Polyclonal Antibody
 (Catalog: SAA544Rb19)



AF488 staining on IF;
 Sample: HepG2 cell
 Primary Ab: 20µg/ml Rabbit Anti-Human aHSG Antibody
 Second Ab: 2µg/ml AF488-Linked Caprine Anti-Rabbit IgG Polyclonal Antibody
 (Catalog: SAA544Rb11)

[IMPORTANT NOTE]

The kit is designed for research use only, we will not be responsible for any issue if the kit was used in clinical diagnostic or any other procedures.