

PAA629Hu01

Polyclonal Antibody to BH3 Interacting Domain Death Agonist (Bid)

Organism Species: *Homo sapiens* (Human)

Instruction manual

FOR RESEARCH USE ONLY

NOT FOR USE IN CLINICAL DIAGNOSTIC PROCEDURES

13th Edition (Revised in Aug, 2023)

[PROPERTIES]

Source: Polyclonal antibody preparation

Host: Rabbit

Purification: Antigen-specific affinity chromatography followed by Protein A affinity chromatography

Traits: Liquid

Concentration: 500µg/mL

UOM: 1

Cross Reactivity: Mouse;Rat;Porcine

Applications: WB,IHC

[IMMUNOGEN]

Immunogen: Recombinant Bid (Met1~Asp195 (Accession # P55957)) expressed in *E.coli*

Accession No.: RPA629Hu01

[APPLICATIONS]

Western blotting: 0.01-2µg/mL;

Immunohistochemistry: 5-20µg/mL;

Immunocytochemistry: 5-20µg/mL;

Optimal working dilutions must be determined by end user.

[FORMULATION]

Form & Buffer: Supplied as solution form in 0.01M PBS, pH7.4, containing 0.05% Proclin-300, 50% glycerol.

[STORAGE AND STABILITY]

Storage: Avoid repeated freeze/thaw cycles.

Store at 4°C for frequent use.

Aliquot and store at -20°C for 24 months.

Stability Test: The thermal stability is described by the loss rate. The loss rate was determined by accelerated thermal degradation test, that is, incubate the protein at 37°C for 48h, and no

obvious degradation and precipitation were observed. The loss rate is less than 5% within the expiration date under appropriate storage condition.

[IDENTIFICATION]

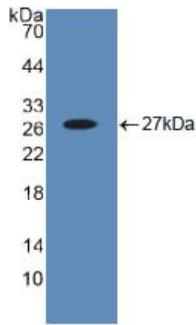
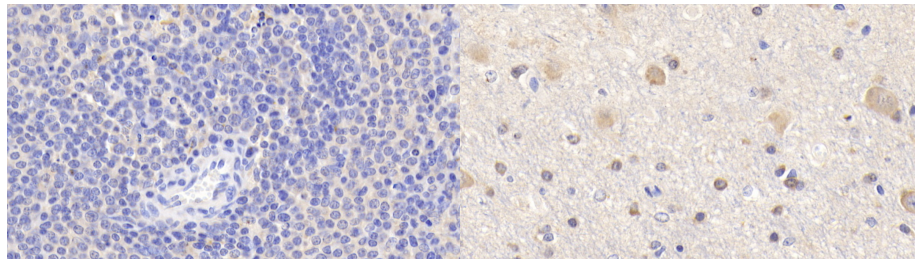
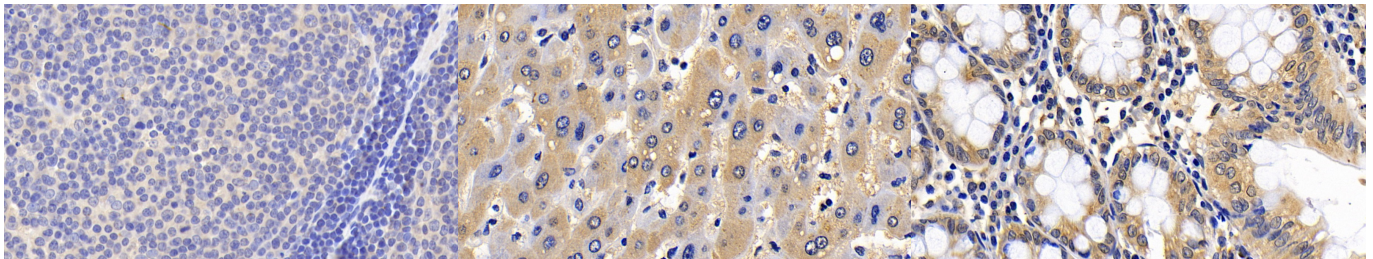


Figure. Western Blot; Sample: Recombinant Bid, Human.



DAB staining on IHC-P; Samples: Human Spleen Tissue; Primary Ab: 20?g/ml Rabbit Anti-Human Bid Antibody Second Ab: 2µg/mL HRP-Linked Caprine Anti-Rabbit IgG Polyclonal Antibody (Catalog: SAA544Rb19)

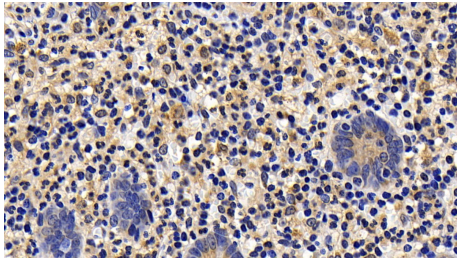
DAB staining on IHC-P; Samples: Porcine Cerebrum Tissue; Primary Ab: 20?g/ml Rabbit Anti-Human Bid Antibody Second Ab: 2µg/mL HRP-Linked Caprine Anti-Rabbit IgG Polyclonal Antibody (Catalog: SAA544Rb19)



DAB staining on IHC-P; Samples: Human Lymph node Tissue; Primary Ab: 20?g/ml Rabbit Anti-Human Bid Antibody Second Ab: 2µg/mL HRP-Linked Caprine Anti-Rabbit IgG Polyclonal Antibody (Catalog: SAA544Rb19)

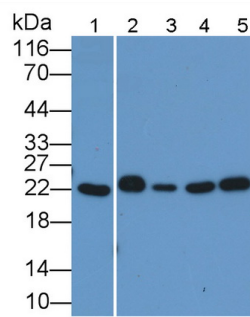
DAB staining on IHC-P; Sample: Human Liver Tissue; Primary Ab: 20ug/ml Rabbit Anti-Human Bid Antibody Second Ab: 2µg/mL HRP-Linked Caprine Anti-Rabbit IgG Polyclonal Antibody (Catalog: SAA544Rb19)

DAB staining on IHC-P; Sample: Human Colon Tissue; Primary Ab: 20ug/ml Rabbit Anti-Human Bid Antibody Second Ab: 2µg/mL HRP-Linked Caprine Anti-Rabbit IgG Polyclonal Antibody (Catalog: SAA544Rb19)

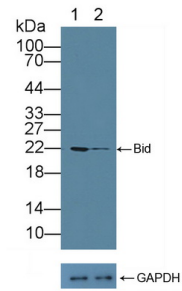


DAB staining on IHC-P;

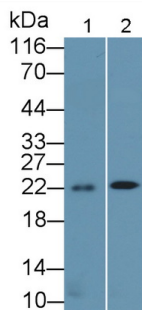
Sample: Human Appendix Tissue;
 Primary Ab: 20ug/ml Rabbit Anti-Human Bid Antibody
 Second Ab: 2µg/mL HRP-Linked Caprine Anti-Rabbit IgG Polyclonal Antibody
 (Catalog: SAA544Rb19)



Western Blot; Sample: Lane1: Human Lung lysate; Lane2: Jurkat cell lysate; Lane3: Hela cell lysate; Lane4: A431 cell lysate; Lane5: MCF7 cell lysate
 Primary Ab: 0.2ug/ml Rabbit Anti-Human Bid Antibody
 Second Ab: 0.2µg/mL HRP-Linked Caprine Anti-Rabbit IgG Polyclonal Antibody
 (Catalog: SAA544Rb19)



Knockout Varification:
 Lane 1: Wild-type Jurkat cell lysate;
 Lane 2: Bid knockout Jurkat cell lysate;
 Predicted MW: 22kd
 Observed MW: 22kd
 Primary Ab: 2µg/ml Rabbit Anti-Human Bid Antibody
 Second Ab: 0.2µg/mL HRP-Linked Caprine Anti-Rabbit IgG Polyclonal Antibody
 (Catalog: SAA544Rb19)



Western Blot; Sample: Lane1: Mouse Spleen lysate; Lane2: Rat Spleen lysate
 Primary Ab: 0.2ug/ml Rabbit Anti-Human Bid Antibody
 Second Ab: 0.2µg/mL HRP-Linked Caprine Anti-Rabbit IgG Polyclonal Antibody
 (Catalog: SAA544Rb19)

[IMPORTANT NOTE]

The kit is designed for research use only, we will not be responsible for any issue if the kit was used in clinical diagnostic or any other procedures.