

PAJ550Hu01

Polyclonal Antibody to Biliverdin Reductase B (BLVRB)

Organism Species: *Homo sapiens (Human)*

Instruction manual

FOR RESEARCH USE ONLY

NOT FOR USE IN CLINICAL DIAGNOSTIC PROCEDURES

13th Edition (Revised in Aug, 2023)

[PROPERTIES]

Source: Polyclonal antibody preparation

Host: Rabbit

Purification: Antigen-specific affinity chromatography followed by Protein A affinity chromatography

Traits: Liquid

Concentration: 0.5mg/mL

UOM: 100µL

Cross Reactivity: Rat

Applications: WB; IHC; ICC/IF

[IMMUNOGEN]

Immunogen: Recombinant BLVRB (Ala2~Gln206) expressed in *E.coli*

Accession No.: RPJ550Hu01

[APPLICATIONS]

Western blotting: 0.01-2µg/mL;

Immunohistochemistry: 5-30µg/mL;

Immunofluorescence: 5-30µg/mL;

Optimal working dilutions must be determined by end user.

[FORMULATION]

Form & Buffer: Supplied as solution form in 0.01M PBS, pH7.4, containing 0.05% Proclin-300, 50% glycerol.

[STORAGE AND STABILITY]

Storage: Avoid repeated freeze/thaw cycles.

Store at 4°C for frequent use.

Aliquot and store at -20°C for 24 months.

Stability Test: The thermal stability is described by the loss rate. The loss rate was determined by accelerated thermal degradation test, that is, incubate the protein at 37°C for 48h, and no

obvious degradation and precipitation were observed. The loss rate is less than 5% within the expiration date under appropriate storage condition.

[IDENTIFICATION]

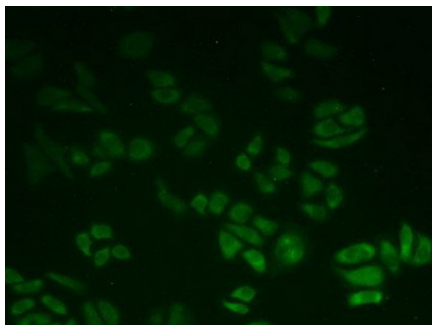
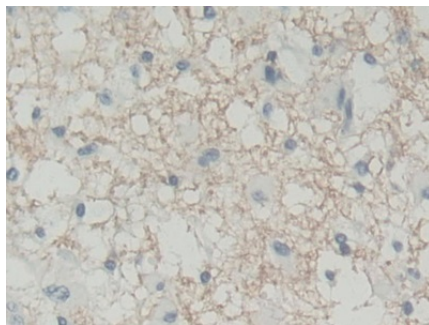
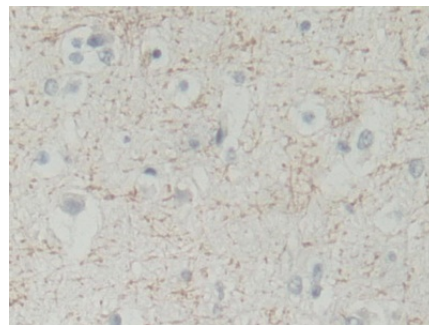


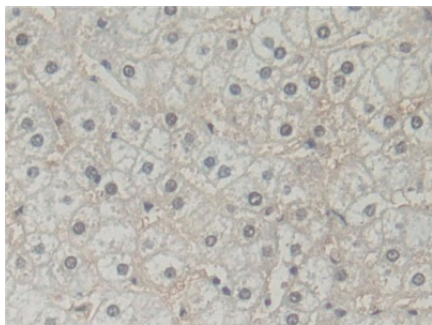
Figure: FITC staining on IHC-P;
Sample: HeLa cells.



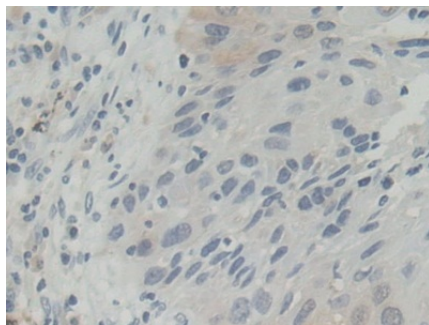
DAB staining on IHC-P;
Samples: Human Glioma Tissue;
Primary Ab: 30µg/ml Rabbit Anti-Human BLVRB Antibody
Second Ab: 2µg/mL HRP-Linked Caprine Anti-Rabbit IgG Polyclonal Antibody
(Catalog: SAA544Rb19)



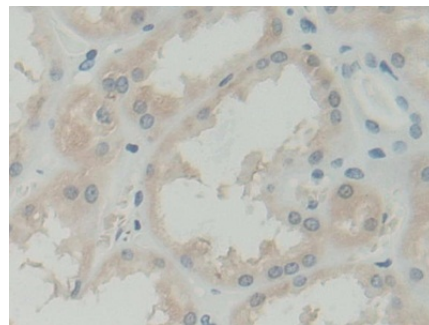
DAB staining on IHC-P;
Samples: Human Cerebrum Tissue;
Primary Ab: 30µg/ml Rabbit Anti-Human BLVRB Antibody
Second Ab: 2µg/mL HRP-Linked Caprine Anti-Rabbit IgG Polyclonal Antibody
(Catalog: SAA544Rb19)



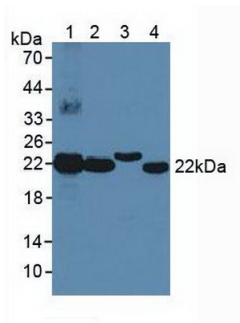
DAB staining on IHC-P;
Samples: Human Liver Tissue;
Primary Ab: 30µg/ml Rabbit Anti-Human BLVRB Antibody
Second Ab: 2µg/mL HRP-Linked Caprine Anti-Rabbit IgG Polyclonal Antibody
(Catalog: SAA544Rb19)



DAB staining on IHC-P;
Samples: Human Lung cancer Tissue;
Primary Ab: 30µg/ml Rabbit Anti-Human BLVRB Antibody
Second Ab: 2µg/mL HRP-Linked Caprine Anti-Rabbit IgG Polyclonal Antibody
(Catalog: SAA544Rb19)

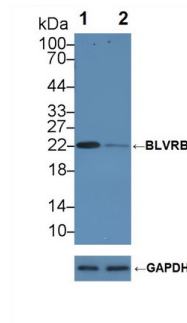


DAB staining on IHC-P;
Samples: Human Kidney Tissue;
Primary Ab: 30µg/ml Rabbit Anti-Human BLVRB Antibody
Second Ab: 2µg/mL HRP-Linked Caprine Anti-Rabbit IgG Polyclonal Antibody
(Catalog: SAA544Rb19)



Western Blot; Sample: Lane1: Human Liver lysate; Lane2: Human Lung lysate; Lane3: Rat Liver lysate; Lane4: HeLa cell lysate

Primary Ab: 1µg/ml Rabbit Anti-Human BLVRB Antibody
Second Ab: 0.2µg/mL HRP-Linked Caprine Anti-Rabbit IgG Polyclonal Antibody
(Catalog: SAA544Rb19)



Knockout Varification:

Lane 1: Wild-type HeLa cell lysate; Lane 2: BLVRB knockout HeLa cell lysate;

Predicted MW: 22kd
Observed MW: 22kd

Primary Ab: 1µg/ml Rabbit Anti-Human BLVRB Antibody
Second Ab: 0.2µg/mL HRP-Linked Caprine Anti-Rabbit IgG Polyclonal Antibody
(Catalog: SAA544Rb19)

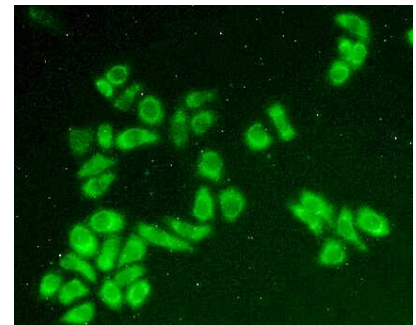


Figure: FITC staining on IHC-P;
Sample: HeLa cells.

[**IMPORTANT NOTE**]

The kit is designed for research use only, we will not be responsible for any issue if the kit was used in clinical diagnostic or any other procedures.