

PAA782Ra02

Polyclonal Antibody to Carbonic Anhydrase II (CA2)

Organism Species: *Rattus norvegicus* (Rat)

Instruction manual

FOR RESEARCH USE ONLY

NOT FOR USE IN CLINICAL DIAGNOSTIC PROCEDURES

13th Edition (Revised in Aug, 2023)

[PROPERTIES]

Source: Polyclonal antibody preparation

Host: Rabbit

Purification: Antigen-specific affinity chromatography followed by Protein A affinity chromatography

Traits: Liquid

Concentration: 0.5mg/mL

UOM: 100µL

Cross Reactivity: N/A

Applications: WB; IHC; ICC; IP.

[IMMUNOGEN]

Immunogen: Recombinant CA2 (Met1~Lys260) expressed in *E.coli*

Accession No.: RPA782Ra01

[APPLICATIONS]

Western blotting: 0.01-2µg/mL;

Immunohistochemistry: 5-30µg/mL;

Immunocytochemistry: 5-20µg/mL;

Optimal working dilutions must be determined by end user.

[FORMULATION]

Form & Buffer: Supplied as solution form in 0.01M PBS, pH7.4, containing 0.05% Proclin-300, 50% glycerol.

[STORAGE AND STABILITY]

Storage: Avoid repeated freeze/thaw cycles.

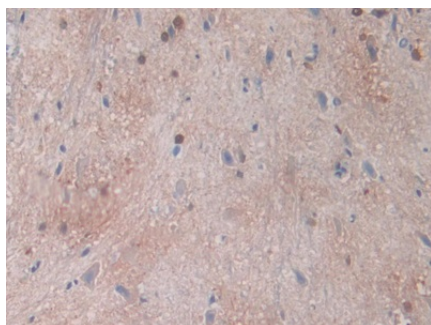
Store at 4°C for frequent use.

Aliquot and store at -20°C for 24 months.

Stability Test: The thermal stability is described by the loss rate. The loss rate was determined by accelerated thermal degradation test, that is, incubate the protein at 37°C for 48h, and no

obvious degradation and precipitation were observed. The loss rate is less than 5% within the expiration date under appropriate storage condition.

[IDENTIFICATION]



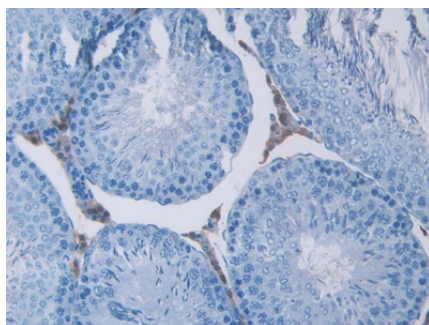
DAB staining on IHC-P;

Samples: Rat Spinal cord Tissue;

Primary Ab: 30µg/ml Rabbit Anti-Rat
CA2 Antibody

Second Ab: 2µg/mL HRP-Linked
Caprine Anti-Rabbit IgG Polyclonal
Antibody

(Catalog: SAA544Rb19)



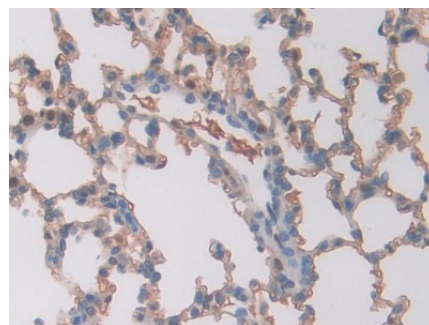
DAB staining on IHC-P;

Samples: Rat Testis Tissue;

Primary Ab: 30µg/ml Rabbit Anti-Rat
CA2 Antibody

Second Ab: 2µg/mL HRP-Linked
Caprine Anti-Rabbit IgG Polyclonal
Antibody

(Catalog: SAA544Rb19)



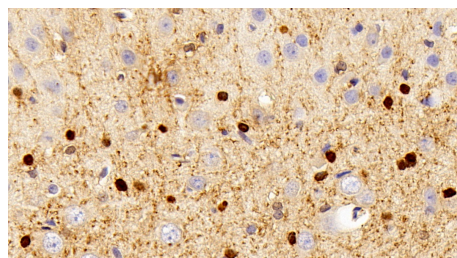
DAB staining on IHC-P;

Samples: Rat Lung Tissue;

Primary Ab: 30µg/ml Rabbit Anti-Rat
CA2 Antibody

Second Ab: 2µg/mL HRP-Linked
Caprine Anti-Rabbit IgG Polyclonal
Antibody

(Catalog: SAA544Rb19)



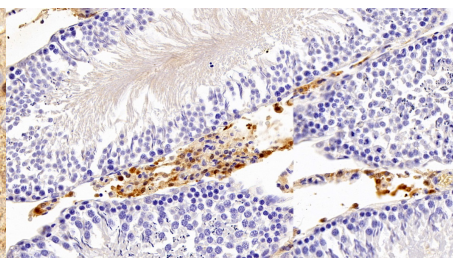
DAB staining on IHC-P;

Sample: Rat Cerebrum Tissue;

Primary Ab: 20µg/ml Rabbit Anti-Rat
CA2 Antibody

Second Ab: 2µg/mL HRP-Linked
Caprine Anti-Rabbit IgG Polyclonal
Antibody

(Catalog: SAA544Rb19)



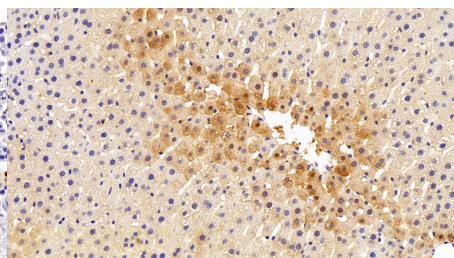
DAB staining on IHC-P;

Sample: Rat Testis Tissue;

Primary Ab: 20µg/ml Rabbit Anti-Rat
CA2 Antibody

Second Ab: 2µg/mL HRP-Linked
Caprine Anti-Rabbit IgG Polyclonal
Antibody

(Catalog: SAA544Rb19)



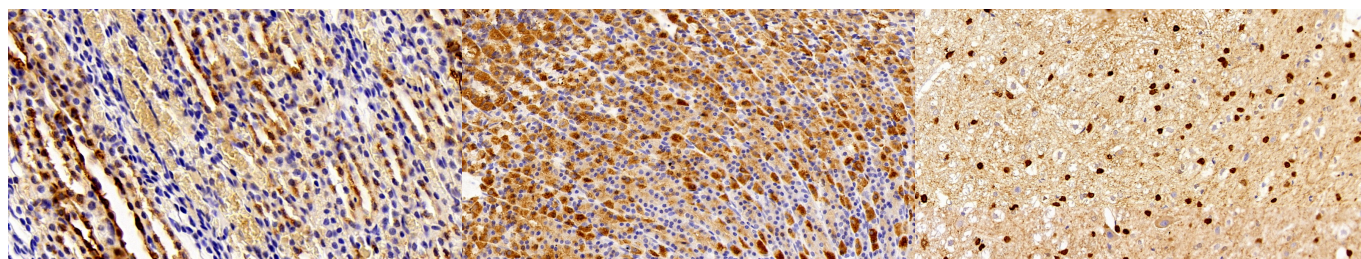
DAB staining on IHC-P;

Sample: Rat Liver Tissue;

Primary Ab: 20µg/ml Rabbit Anti-Rat
CA2 Antibody

Second Ab: 2µg/mL HRP-Linked
Caprine Anti-Rabbit IgG Polyclonal
Antibody

(Catalog: SAA544Rb19)



DAB staining on IHC-P;

Sample: Rat Kidney Tissue;

Primary Ab: 20µg/ml Rabbit Anti-Rat
CA2 Antibody

Second Ab: 2µg/mL HRP-Linked
Caprine Anti-Rabbit IgG Polyclonal
Antibody

(Catalog: SAA544Rb19)

DAB staining on IHC-P;

Sample: Rat Stomach Tissue;

Primary Ab: 20µg/ml Rabbit Anti-Rat
CA2 Antibody

Second Ab: 2µg/mL HRP-Linked
Caprine Anti-Rabbit IgG Polyclonal
Antibody

(Catalog: SAA544Rb19)

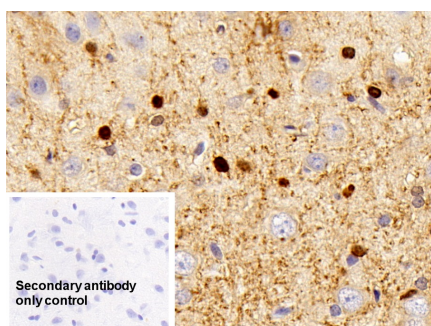
DAB staining on IHC-P;

Sample: Rat Spinal cord Tissue;

Primary Ab: 20µg/ml Rabbit Anti-Rat
CA2 Antibody

Second Ab: 2µg/mL HRP-Linked
Caprine Anti-Rabbit IgG Polyclonal
Antibody

(Catalog: SAA544Rb19)



DAB staining on IHC-P;

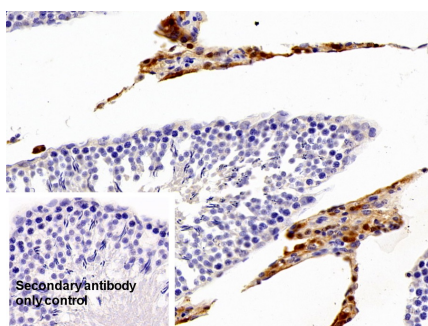
Sample: Rat Cerebrum Tissue

Primary Ab: 30µg/ml Rabbit Anti-Rat
CA2 Antibody

Control: Used PBS instead of primary
antibody

Second Ab: 2µg/ml HRP-Linked
Caprine Anti-Rabbit IgG Polyclonal
Antibody

(Catalog: SAA544Rb19)



DAB staining on IHC-P;

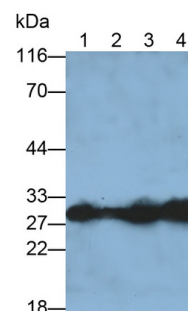
Sample: Rat Testis Tissue

Primary Ab: 30µg/ml Rabbit Anti-Rat
CA2 Antibody

Control: Used PBS instead of primary
antibody

Second Ab: 2µg/ml HRP-Linked
Caprine Anti-Rabbit IgG Polyclonal
Antibody

(Catalog: SAA544Rb19)



Western Blot; Sample: Lane1: Rat

Heart lysate; Lane2: Rat Liver lysate;

Lane3: Rat Spleen lysate; Lane4: Rat
Stomach lysate

Primary Ab: 0.2µg/ml Rabbit Anti-Rat
CA2 Antibody

Second Ab: 0.2µg/mL HRP-Linked
Caprine Anti-Rabbit IgG Polyclonal
Antibody

(Catalog: SAA544Rb19)

[**IMPORTANT NOTE**]

The kit is designed for research use only, we will not be responsible for any issue if the kit was

used in clinical diagnostic or any other procedures.