

**PAD071Ra01**

**Polyclonal Antibody to Carbonic Anhydrase IV (CA4)**

**Organism Species: *Rattus norvegicus* (Rat)**

***Instruction manual***

**FOR RESEARCH USE ONLY**

**NOT FOR USE IN CLINICAL DIAGNOSTIC PROCEDURES**

---

13th Edition (Revised in Aug, 2023)

## **[ PROPERTIES ]**

**Source:** Polyclonal antibody preparation

**Host:** Rabbit

**Purification:** Antigen-specific affinity chromatography followed by Protein A affinity chromatography

**Traits:** Liquid

**Concentration:** 0.5mg/mL

**UOM:** 100μL

**Cross Reactivity:** Human;Mouse;Porcine

**Applications:** WB; IHC; ICC/IF

## **[ IMMUNOGEN ]**

**Immunogen:** Recombinant CA4 (Ser20~Ser220) expressed in *E.coli*

**Accession No.:** RPD071Ra01

## **[ APPLICATIONS ]**

Western blotting: 0.01-2μg/mL;

Immunohistochemistry: 5-20μg/mL;

Immunocytochemistry: 5-30μg/mL;

Optimal working dilutions must be determined by end user.

## **[ FORMULATION ]**

**Form & Buffer:** Supplied as solution form in 0.01M PBS, pH7.4, containing 0.05% Proclin-300, 50% glycerol.

## **[ STORAGE AND STABILITY ]**

**Storage:** Avoid repeated freeze/thaw cycles.

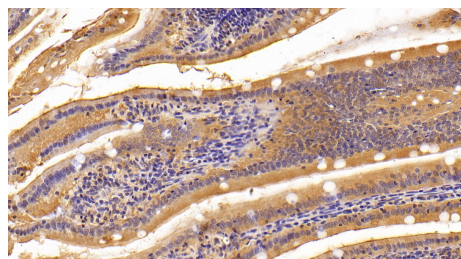
Store at 4°C for frequent use.

Aliquot and store at -20°C for 24 months.

**Stability Test:** The thermal stability is described by the loss rate. The loss rate was determined by accelerated thermal degradation test, that is, incubate the protein at 37°C for 48h, and no

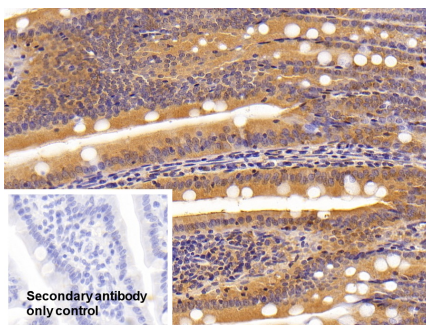
obvious degradation and precipitation were observed. The loss rate is less than 5% within the expiration date under appropriate storage condition.

## [ IDENTIFICATION ]

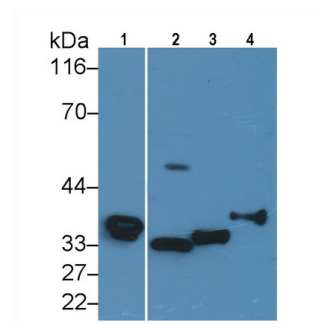


DAB staining on IHC-P; Sample: Rat

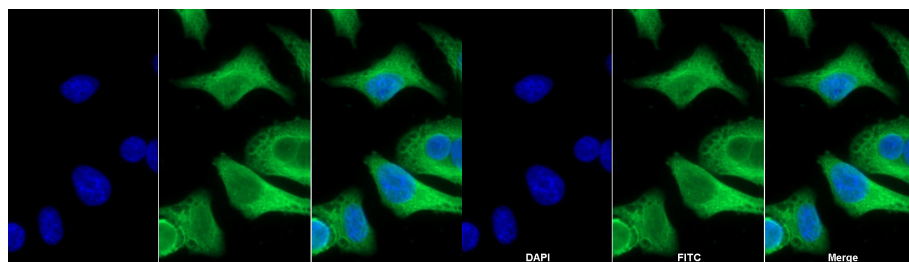
Small intestine Tissue; Primary Ab:  
20ug/ml Rabbit Anti-Rat CA4 Antibody  
Second Ab: 2µg/mL HRP-Linked  
Caprine Anti-Rabbit IgG Polyclonal  
Antibody (Catalog: SAA544Rb19)



DAB staining on IHC-P; Sample: Rat  
Small intestine Tissue; Primary Ab:  
20µg/ml Rabbit Anti-Rat CA4  
Antibody; Control: Used PBS instead of  
primary antibody; Second Ab: 2µg/ml  
HRP-Linked Caprine Anti-Rabbit IgG  
Polyclonal Antibody (Catalog:  
SAA544Rb19)



Western Blot; Sample: Lane1: Rat Lung  
lysate; Lane2: Human Lung lysate;  
Lane3: Mouse Lung lysate; Lane4:  
Porcine Lung lysate  
Primary Ab: 0.2µg/ml Rabbit Anti-Rat  
CA4 Antibody  
Second Ab: 0.2µg/mL HRP-Linked  
Caprine Anti-Rabbit IgG Polyclonal  
Antibody  
(Catalog: SAA544Rb19)



FITC staining on IF;

Sample: Human Hela cell;

Primary Ab: 30µg/ml Rabbit Anti-Rat  
CA4 Antibody  
Second Ab: 2µg/ml FITC-Linked  
Caprine Anti-Rabbit IgG Polyclonal  
Antibody  
(Catalog: SAA544Rb18)

FITC staining on IF;

Sample: Hela cell

Primary Ab: 30µg/ml Rabbit Anti-Rat  
CA4 Antibody  
Second Ab: 2µg/ml FITC-Linked  
Caprine Anti-Rabbit IgG Polyclonal  
Antibody  
(Catalog: SAA544Rb11)

**[ IMPORTANT NOTE ]**

The kit is designed for research use only, we will not be responsible for any issue if the kit was used in clinical diagnostic or any other procedures.