

PAA244Hu02

Polyclonal Antibody to Caspase 2 (CASP2)

Organism Species: *Homo sapiens (Human)*

Instruction manual

FOR RESEARCH USE ONLY

NOT FOR USE IN CLINICAL DIAGNOSTIC PROCEDURES

13th Edition (Revised in Aug, 2023)

[**PROPERTIES**]

Source: Polyclonal antibody preparation

Host: Rabbit

Purification: Antigen-specific affinity chromatography followed by Protein A affinity chromatography

Traits: Liquid

Concentration: 500µg/mL

UOM: 1

Cross Reactivity: Mouse;Rat;Porcine

Applications: WB,IHC,ICC/IF

[**IMMUNOGEN**]

Immunogen: Recombinant CASP2 (Gly170~Thr325) expressed in *E.coli*

Accession No.: RPA244Hu02

[**APPLICATIONS**]

Western blotting: 0.01-3µg/mL

Immunohistochemistry: 2-30µg/mL

Immunocytochemistry: 2-30µg/mL

Optimal working dilutions must be determined by end user.

[**FORMULATION**]

Form & Buffer: Supplied as solution form in 0.01M PBS, pH7.4, containing 0.05% Proclin-300, 50% glycerol.

[**STORAGE AND STABILITY**]

Storage: Avoid repeated freeze/thaw cycles.

Store at 4°C for frequent use.

Aliquot and store at -20°C for 24 months.

Stability Test: The thermal stability is described by the loss rate. The loss rate was determined by accelerated thermal degradation test, that is, incubate the protein at 37°C for 48h, and no

obvious degradation and precipitation were observed. The loss rate is less than 5% within the expiration date under appropriate storage condition.

[IDENTIFICATION]

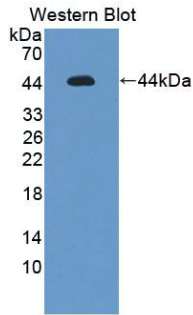
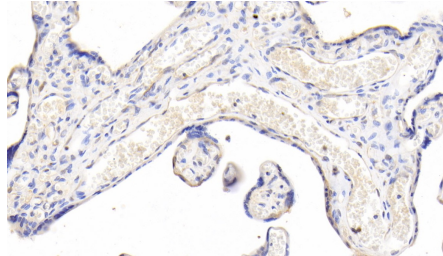
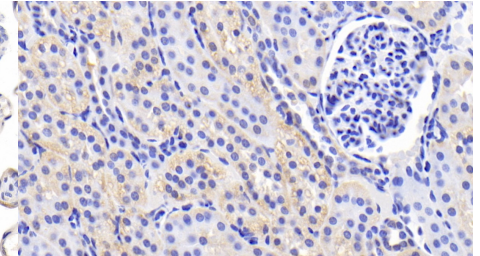


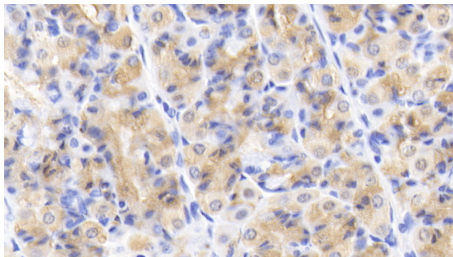
Figure. Western Blot; Sample: Recombinant CASP2, Human.



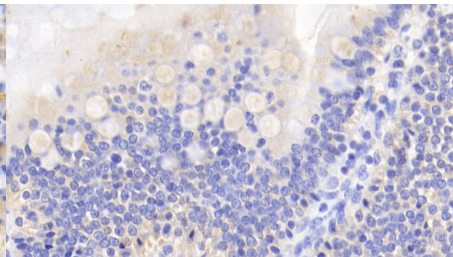
DAB staining on IHC-P; Samples: Human Placenta Tissue; Primary Ab: 20?g/ml Rabbit Anti-Human CASP2 Antibody Second Ab: 2µg/mL HRP-Linked Caprine Anti-Rabbit IgG Polyclonal Antibody (Catalog: SAA544Rb19)



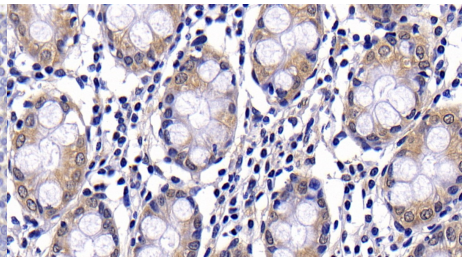
DAB staining on IHC-P; Samples: Porcine Kidney Tissue; Primary Ab: 20?g/ml Rabbit Anti-Human CASP2 Antibody Second Ab: 2µg/mL HRP-Linked Caprine Anti-Rabbit IgG Polyclonal Antibody (Catalog: SAA544Rb19)



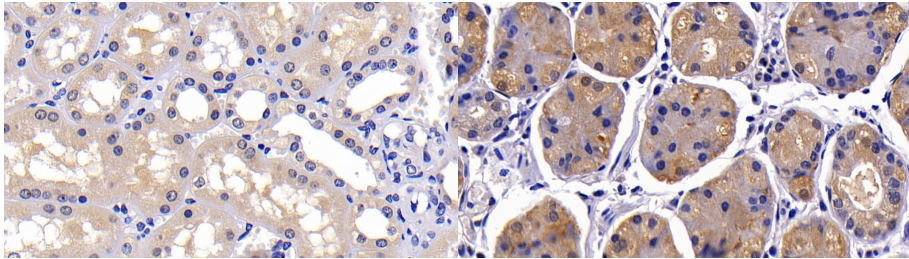
DAB staining on IHC-P; Samples: Porcine Stomach Tissue; Primary Ab: 20?g/ml Rabbit Anti-Human CASP2 Antibody Second Ab: 2µg/mL HRP-Linked Caprine Anti-Rabbit IgG Polyclonal Antibody (Catalog: SAA544Rb19)



DAB staining on IHC-P; Samples: Porcine Small intestine Tissue; Primary Ab: 20?g/ml Rabbit Anti-Human CASP2 Antibody Second Ab: 2µg/mL HRP-Linked Caprine Anti-Rabbit IgG Polyclonal Antibody (Catalog: SAA544Rb19)



DAB staining on IHC-P; Samples: Human Colon Tissue; Primary Ab: 30ug/ml Rabbit Anti-Human CASP2 Antibody Second Ab: 2µg/mL HRP-Linked Caprine Anti-Rabbit IgG Polyclonal Antibody (Catalog: SAA544Rb19)



DAB staining on IHC-P;

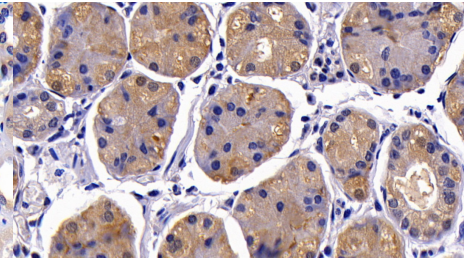
Samples: Human Kidney Tissue;

Primary Ab: 30ug/ml Rabbit Anti-Human CASP2 Antibody

Second Ab: 2µg/mL HRP-Linked Caprine Anti-Rabbit IgG Polyclonal

Antibody

(Catalog: SAA544Rb19)



DAB staining on IHC-P;

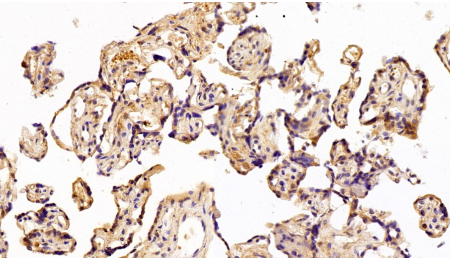
Samples: Human Stomach Tissue;

Primary Ab: 30ug/ml Rabbit Anti-Human CASP2 Antibody

Second Ab: 2µg/mL HRP-Linked Caprine Anti-Rabbit IgG Polyclonal

Antibody

(Catalog: SAA544Rb19)



DAB staining on IHC-P;

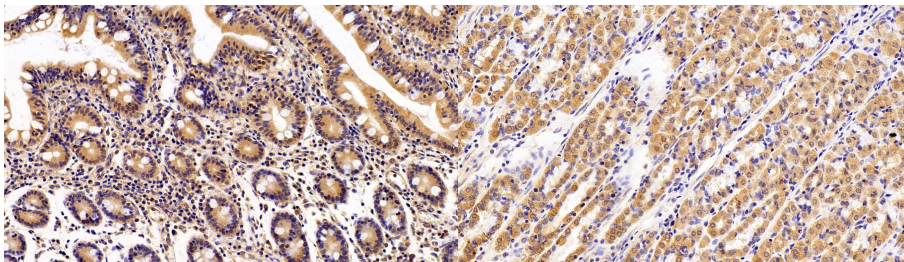
Sample: Human Placenta Tissue;

Primary Ab: 10ug/ml Rabbit Anti-Human CASP2 Antibody

Second Ab: 2µg/mL HRP-Linked Caprine Anti-Rabbit IgG Polyclonal

Antibody

(Catalog: SAA544Rb19)



DAB staining on IHC-P;

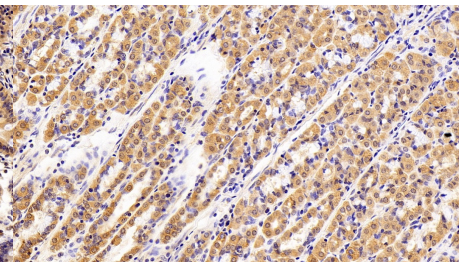
Sample: Porcine Small intestine Tissue;

Primary Ab: 10ug/ml Rabbit Anti-Human CASP2 Antibody

Second Ab: 2µg/mL HRP-Linked Caprine Anti-Rabbit IgG Polyclonal

Antibody

(Catalog: SAA544Rb19)



DAB staining on IHC-P;

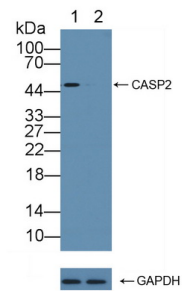
Sample: Porcine Stomach Tissue;

Primary Ab: 10ug/ml Rabbit Anti-Human CASP2 Antibody

Second Ab: 2µg/mL HRP-Linked Caprine Anti-Rabbit IgG Polyclonal

Antibody

(Catalog: SAA544Rb19)



Knockout Varification:

Lane 1: Wild-type Jurkat cell lysate;

Lane 2: CASP2 knockout Jurkat cell lysate;

Predicted MW: 10,35,51kd

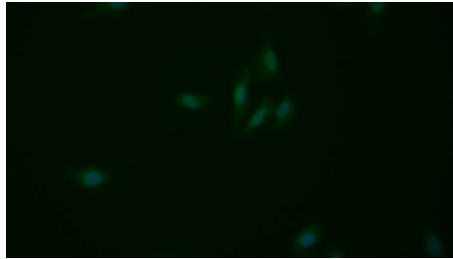
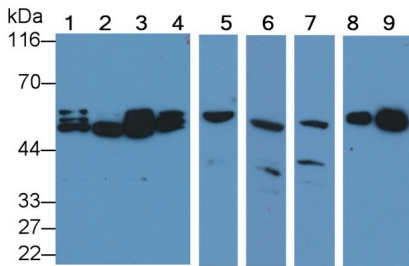
Observed MW: 51kd

Primary Ab: 1µg/ml Rabbit Anti-Human CASP2 Antibody

Second Ab: 0.2µg/mL HRP-Linked Caprine Anti-Rabbit IgG Polyclonal

Antibody

(Catalog: SAA544Rb19)



FITC staining on IF;

Western Blot; Sample: Lane1: Hela cell lysate; Lane2: Jurkat cell lysate; Lane3: 293T cell lysate; Lane4: Raji cell lysate; Lane5: Porcine Cerebrum lysate; Lane6: Rat Cerebrum lysate; Lane7: Rat Kidney lysate; Lane8: Mouse Cerebrum lysate; Lane9: Mouse Lung lysate

Samples: Human U2OS cell;
 Primary Ab: 20?g/ml Rabbit Anti-Human CASP2 Antibody
 Second Ab: 1.5?g/ml FITC-Linked Caprine Anti-Rabbit IgG Polyclonal Antibody
 (Catalog: SAA544Rb18)

Primary Ab: 0.2?g/ml Rabbit Anti-Human CASP2 Antibody
 Second Ab: 0.2µg/mL HRP-Linked Caprine Anti-Rabbit IgG Polyclonal Antibody
 (Catalog: SAA544Rb19)

[IMPORTANT NOTE]

The kit is designed for research use only, we will not be responsible for any issue if the kit was used in clinical diagnostic or any other procedures.