

PAA853Mu02

Polyclonal Antibody to Caspase 8 (CASP8)

Organism Species: *Mus musculus* (Mouse)

Instruction manual

FOR RESEARCH USE ONLY

NOT FOR USE IN CLINICAL DIAGNOSTIC PROCEDURES

13th Edition (Revised in Aug, 2023)

[PROPERTIES]

Source: Polyclonal antibody preparation

Host: Rabbit

Purification: Antigen-specific affinity chromatography followed by Protein A affinity chromatography

Traits: Liquid

Concentration: 0.5mg/ml

UOM: 100µl

Cross Reactivity: Human;Mouse

Applications: WB; IHC; ICC; IP.

[IMMUNOGEN]

Immunogen: Recombinant CASP8 (Met1~Asp218 (Accession # O89110)) expressed in *E.coli*

Accession No.: RPA853Mu02

[APPLICATIONS]

Western blotting: 0.01-2µg/mL;

Immunohistochemistry: 5-20µg/mL;

Immunofluorescence:5-20µg/mL;

Optimal working dilutions must be determined by end user.

[FORMULATION]

Form & Buffer: Supplied as solution form in PBS, pH7.4, containing 0.02% NaN₃, 50% glycerol.

[STORAGE AND STABILITY]

Storage: Avoid repeated freeze/thaw cycles.

Store at 4°C for frequent use.

Aliquot and store at -20°C for 24 months.

Stability Test: The thermal stability is described by the loss rate. The loss rate was determined by accelerated thermal degradation test, that is, incubate the protein at 37°C for 48h, and no

obvious degradation and precipitation were observed. The loss rate is less than 5% within the expiration date under appropriate storage condition.

[IDENTIFICATION]

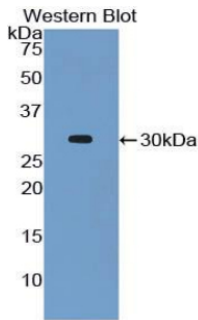
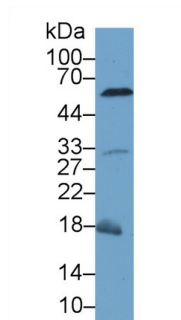
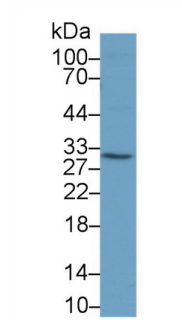


Figure. Western Blot; Sample: Recombinant CASP8, Mouse.



Western Blot; Sample: Mouse Liver lysate;



Western Blot; Sample: Human HepG2 cell lysate;

Primary Ab: 1µg/ml Rabbit Anti-Mouse CASP8 Antibody

Primary Ab: 1µg/ml Rabbit Anti-Mouse CASP8 Antibody

Second Ab: 0.2µg/mL HRP-Linked

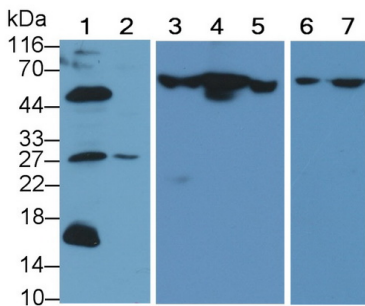
Second Ab: 0.2µg/mL HRP-Linked

Caprine Anti-Rabbit IgG Polyclonal Antibody

Caprine Anti-Rabbit IgG Polyclonal Antibody

(Catalog: SAA544Rb19)

(Catalog: SAA544Rb19)



Western Blot; Sample: Lane1: Mouse Liver lysate; Lane2: HepG2 cell lysate; Lane3: Mouse Lung lysate; Lane4: Mouse Spleen lysate; Lane5: Mouse Placenta lysate; Lane6: 3T3-L1 cell lysate; Lane7: RAW264.7 cell lysate
Primary Ab: 0.2µg/ml Rabbit Anti-Mouse CASP8 Antibody
Second Ab: 0.2µg/mL HRP-Linked

Caprine Anti-Rabbit IgG Polyclonal

Antibody

(Catalog: SAA544Rb19)

[IMPORTANT NOTE]

The kit is designed for research use only, we will not be responsible for any issue if the kit was used in clinical diagnostic or any other procedures.