

**PAC011Hu01**

**Polyclonal Antibody to Complement Factor B (CFB)**

**Organism Species: *Homo sapiens (Human)***

***Instruction manual***

**FOR RESEARCH USE ONLY**

**NOT FOR USE IN CLINICAL DIAGNOSTIC PROCEDURES**

---

13th Edition (Revised in Aug, 2023)

## **[ PROPERTIES ]**

**Source:** Polyclonal antibody preparation

**Host:** Rabbit

**Purification:** Antigen-specific affinity chromatography followed by Protein A affinity chromatography

**Traits:** Liquid

**Concentration:** 0.5mg/mL

**UOM:** 100µL

**Cross Reactivity:** Mouse

**Applications:** WB; IHC

## **[ IMMUNOGEN ]**

**Immunogen:** Recombinant CFB (Asn270~Thr388) expressed in *E.coli*

**Accession No.:** RPC011Hu01

## **[ APPLICATIONS ]**

Western blotting: 0.01-2µg/mL;

Immunohistochemistry: 5-20µg/mL;

Optimal working dilutions must be determined by end user.

## **[ FORMULATION ]**

**Form & Buffer:** Supplied as solution form in 0.01M PBS, pH7.4, containing 0.05% Proclin-300, 50% glycerol.

## **[ STORAGE AND STABILITY ]**

**Storage:** Avoid repeated freeze/thaw cycles.

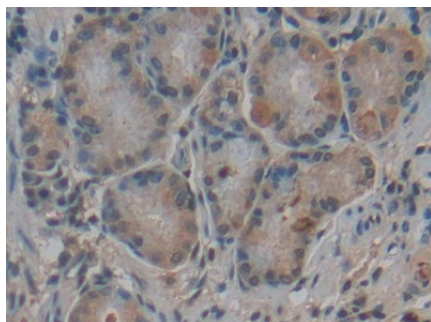
Store at 4°C for frequent use.

Aliquot and store at -20°C for 24 months.

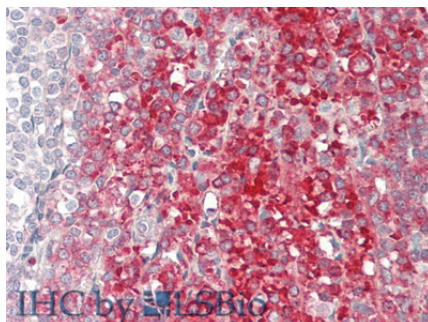
**Stability Test:** The thermal stability is described by the loss rate. The loss rate was determined by accelerated thermal degradation test, that is, incubate the protein at 37°C for 48h, and no obvious degradation and precipitation were observed. The loss rate is less than 5% within the

expiration date under appropriate storage condition.

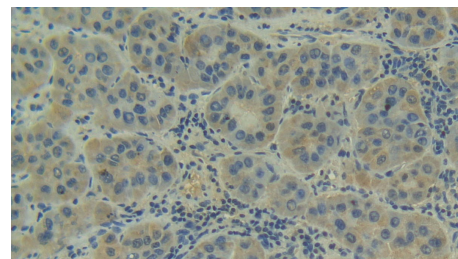
**[ IDENTIFICATION ]**



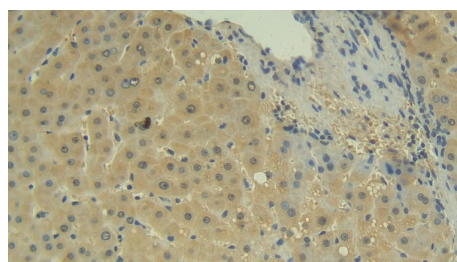
DAB staining on IHC-P; Samples:  
Human Stomach Tissue; Primary Ab:  
20µg/ml Rabbit Anti-Human CFB  
Antibody Second Ab: 2µg/mL HRP-  
Linked Caprine Anti-Rabbit IgG  
Polyclonal Antibody (Catalog:  
SAA544Rb19)



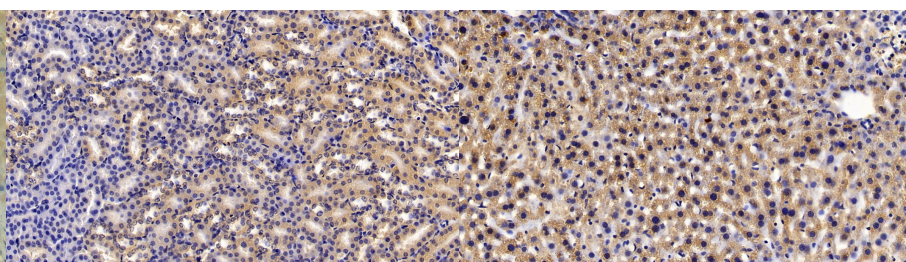
Vector Red staining on IHC-P;  
Samples: Human Spleen Tissue;  
Primary Ab: 15µg/ml Rabbit Anti-  
Human CFB Antibody  
Second Ab: 2µg/mL HRP-Linked  
Caprine Anti-Rabbit IgG Polyclonal  
Antibody



DAB staining on IHC-P;  
Samples: Human Liver cancer Tissue;  
Primary Ab: 20µg/ml Rabbit Anti-  
Human CFB Antibody  
Second Ab: 2µg/mL HRP-Linked  
Caprine Anti-Rabbit IgG Polyclonal  
Antibody  
(Catalog: SAA544Rb19)

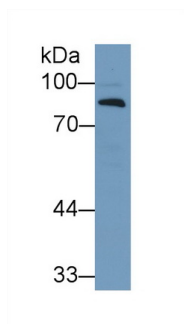


DAB staining on IHC-P;  
Samples: Human Liver cancer Tissue;  
Primary Ab: 20µg/ml Rabbit Anti-  
Human CFB Antibody  
Second Ab: 2µg/mL HRP-Linked  
Caprine Anti-Rabbit IgG Polyclonal  
Antibody  
(Catalog: SAA544Rb19)



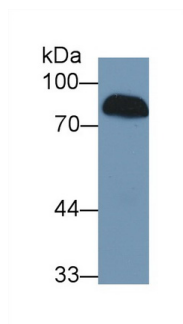
DAB staining on IHC-P;  
Sample: Mouse Kidney Tissue;  
Primary Ab: 20ug/ml Rabbit Anti-  
Human CFB Antibody  
Second Ab: 2µg/mL HRP-Linked  
Caprine Anti-Rabbit IgG Polyclonal  
Antibody  
(Catalog: SAA544Rb19)

DAB staining on IHC-P;  
Sample: Mouse Liver Tissue;  
Primary Ab: 20ug/ml Rabbit Anti-  
Human CFB Antibody  
Second Ab: 2µg/mL HRP-Linked  
Caprine Anti-Rabbit IgG Polyclonal  
Antibody  
(Catalog: SAA544Rb19)



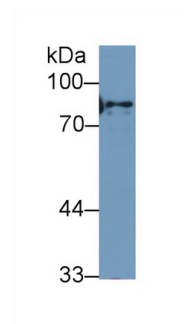
Western Blot; Sample: Human Lung lysate;

Primary Ab: 1µg/ml Rabbit Anti-Human CFB Antibody  
 Second Ab: 0.2µg/mL HRP-Linked Caprine Anti-Rabbit IgG Polyclonal Antibody  
 (Catalog: SAA544Rb19)



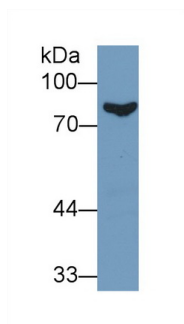
Western Blot; Sample: Human Serum; Primary Ab: 1µg/ml Rabbit Anti-Human CFB Antibody

Second Ab: 0.2µg/mL HRP-Linked Caprine Anti-Rabbit IgG Polyclonal Antibody  
 (Catalog: SAA544Rb19)



Western Blot; Sample: Human Liver lysate;

Primary Ab: 1µg/ml Rabbit Anti-Human CFB Antibody  
 Second Ab: 0.2µg/mL HRP-Linked Caprine Anti-Rabbit IgG Polyclonal Antibody  
 (Catalog: SAA544Rb19)



Western Blot; Sample: Human Urine; Primary Ab: 1µg/ml Rabbit Anti-Human CFB Antibody

Second Ab: 0.2µg/mL HRP-Linked Caprine Anti-Rabbit IgG Polyclonal Antibody  
 (Catalog: SAA544Rb19)

### [ **IMPORTANT NOTE** ]

The kit is designed for research use only, we will not be responsible for any issue if the kit was used in clinical diagnostic or any other procedures.