

PAA639Hu01**Polyclonal Antibody to Cross Linked N-Telopeptide Of Type I Collagen (NTXI)****Organism Species: Homo sapiens (Human)*****Instruction manual***

FOR IN VITRO USE AND RESEARCH USE ONLY

NOT FOR USE IN CLINICAL DIAGNOSTIC PROCEDURES

9th Edition (Revised in Jul, 2013)

[PRODUCT INFORMATION]**Immunogen:** NTXI-OVA**Purification:** Affinity Chromatography.**Clonality:** Polyclonal**Applications:** WB, ICC, IHC-P, IHC-F, ELISA**Host:** Rabbit**Concentration:** 200µg/mL**Immunoglobulin Type:** IgG**UOM:** 50µg**[IMMUNOGEN INFORMATION]****Immunogen:** Synthetic Peptide, NTXI conjugated to OVA.**Accession No.:** CPA639Hu21**Sequence:** The target peptide sequence is listed below.

QLSYGYDEKSTGGISVP

[RELEVANCE]

Cross Linked N-Telopeptide Of Type I Collagen (NTXI) is a biomarker used to measure the rate of bone turnover, and can be measured in the urine or serum. To determine an individual's rate of bone turnover, numerous biomarkers are available in the body fluids that can be correlated to this rate, and one such biomarker is NTXI. However, while NTXI does fluctuate in a very sensitive manner in line with bone resorption patterns, they are not very specific, in that they may vary spontaneously without physiologic intervention.

[ANTIBODY SPECIFICITY]

The antibody is a rabbit polyclonal antibody raised against NTXI conjugated to OVA. It has been selected for its ability to recognize NTXI in immunohistochemical staining and western blotting.

[APPLICATIONS]

Western blotting: 1:100-400

Immunocytochemistry in formalin fixed cells: 1:100-500

Immunohistochemistry in formalin fixed frozen section: 1:100-500

Immunohistochemistry in paraffin section: 1:50-200

Enzyme-linked Immunosorbent Assay: 1:100-200

Optimal working dilutions must be determined by end user.

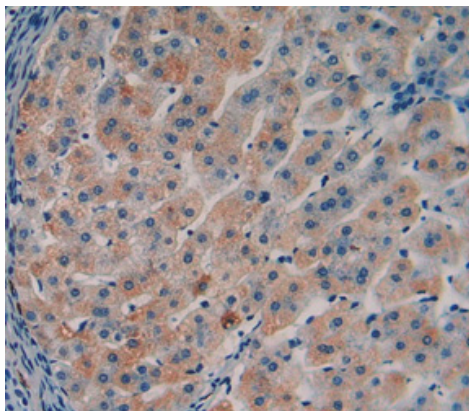
[CONTENTS]

Form & Buffer: Supplied as solution form in PBS, pH7.4, containing 0.02% NaN_3 , 50% glycerol.

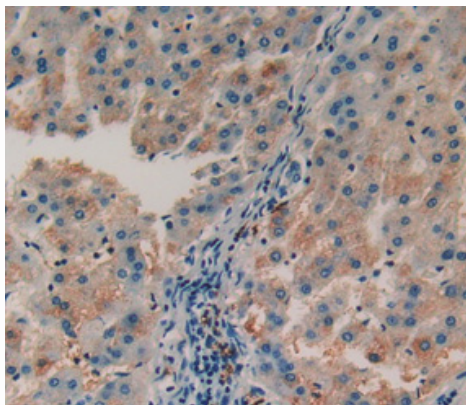
[STORAGE]

Store at 4°C for frequent use. Stored at -20°C to -80°C in a manual defrost freezer for one year without detectable loss of activity. Avoid repeated freeze-thaw cycles.

[IMAGES]



Used in DAB staining on formalin fixed
paraffin-embedded liver tissue



Used in DAB staining on formalin fixed
paraffin-embedded liver cancer tissue

PAA639Hu01

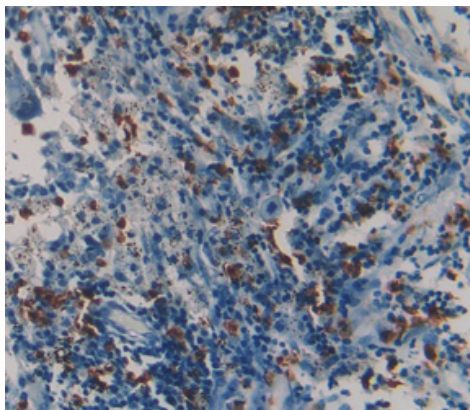
Polyclonal Antibody to Cross Linked N-Telopeptide Of Type I Collagen (NTXI)

Organism Species: Homo sapiens (Human)

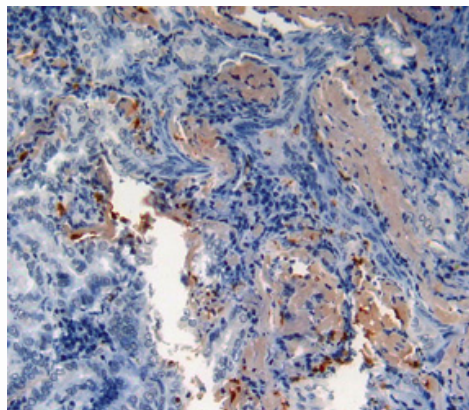
Instruction manual

FOR IN VITRO USE AND RESEARCH USE ONLY

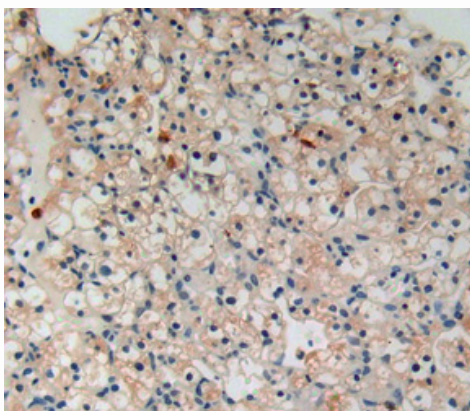
NOT FOR USE IN CLINICAL DIAGNOSTIC PROCEDURES



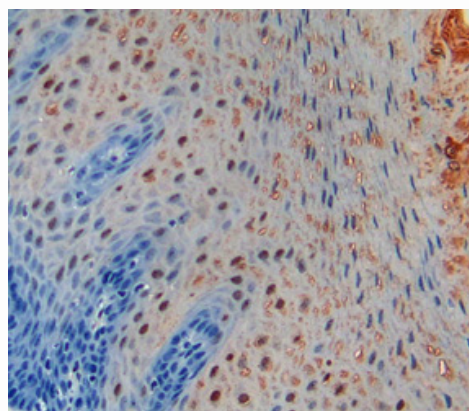
Used in DAB staining on formalin fixed
paraffin- embedded lung cancer tissue



Used in DAB staining on formalin fixed
paraffin- embedded thyroid cancer tissue



Used in DAB staining on formalin fixed
paraffin- embedded kidney cancer tissue



Used in DAB staining on formalin fixed
paraffin- embedded esophagus cancer tissue

PAA639Hu01

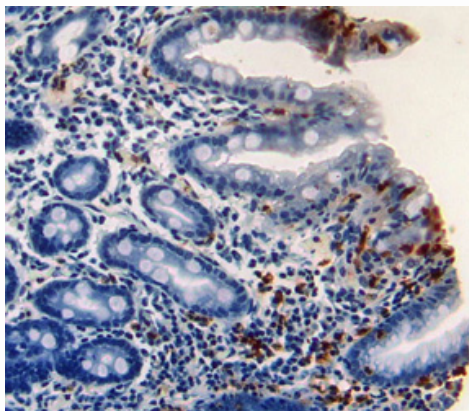
Polyclonal Antibody to Cross Linked N-Telopeptide Of Type I Collagen (NTXI)

Organism Species: Homo sapiens (Human)

Instruction manual

FOR IN VITRO USE AND RESEARCH USE ONLY

NOT FOR USE IN CLINICAL DIAGNOSTIC PROCEDURES



Used in DAB staining on formalin fixed
paraffin- embedded stomach tissue