

PAA794Hu01

Polyclonal Antibody to Cyclin Dependent Kinase Inhibitor 2A (CDKN2A)

Organism Species: *Homo sapiens (Human)*

Instruction manual

FOR RESEARCH USE ONLY

NOT FOR USE IN CLINICAL DIAGNOSTIC PROCEDURES

13th Edition (Revised in Aug, 2023)

[PROPERTIES]

Source: Polyclonal antibody preparation

Host: Rabbit

Purification: Antigen-specific affinity chromatography followed by Protein A affinity chromatography

Traits: Liquid

Concentration: 0.5mg/mL

UOM: 20µL

Cross Reactivity: N/A

Applications: WB; IHC; ICC/IF;FCM

[IMMUNOGEN]

Immunogen: Recombinant CDKN2A (Ser8~Asp156) expressed in *E.coli*

Accession No.: RPA794Hu01

[APPLICATIONS]

Western blotting: 0.01-2?g/mL;

Immunohistochemistry: 5-20?g/mL;

Immunocytochemistry: 5-20?g/mL;

Flow cytometry:20?g/mL;

Optimal working dilutions must be determined by end user.

[FORMULATION]

Form & Buffer: Supplied as solution form in 0.01M PBS, pH7.4, containing 0.05% Proclin-300, 50% glycerol.

[STORAGE AND STABILITY]

Storage: Avoid repeated freeze/thaw cycles.

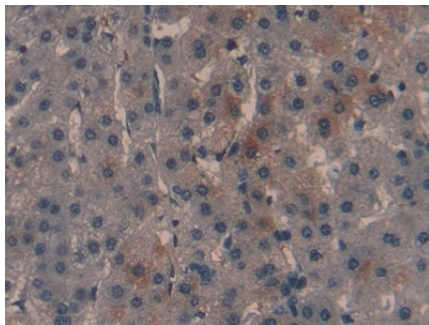
Store at 4°C for frequent use.

Aliquot and store at -20°C for 24 months.

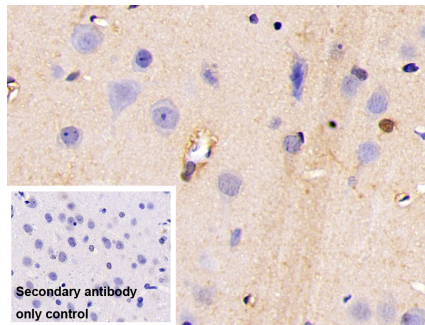
Stability Test: The thermal stability is described by the loss rate. The loss rate was determined

by accelerated thermal degradation test, that is, incubate the protein at 37°C for 48h, and no obvious degradation and precipitation were observed. The loss rate is less than 5% within the expiration date under appropriate storage condition.

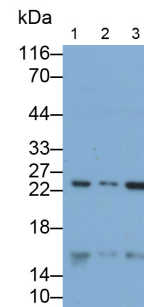
[IDENTIFICATION]



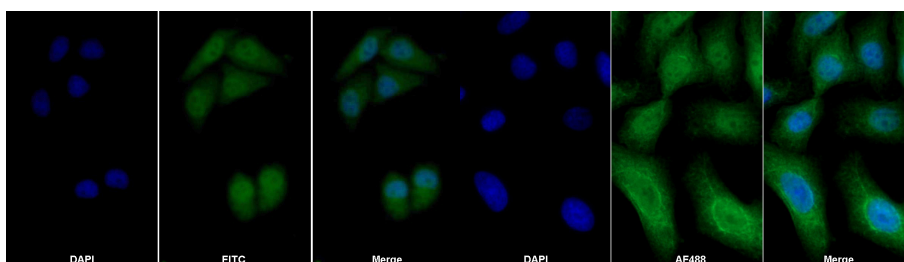
DAB staining on IHC-P; Samples:
Human Liver Tissue; Primary Ab:
20µg/ml Rabbit Anti-Human CDKN2A
Antibody Second Ab: 2µg/mL HRP-
Linked Caprine Anti-Rabbit IgG
Polyclonal Antibody (Catalog:
SAA544Rb19)



DAB staining on IHC-P;
Sample: Rat Cerebrum Tissue
Primary Ab: 10µg/ml Rabbit Anti-
Human CDKN2A Antibody
Control: Used PBS instead of primary
antibody
Second Ab: 2?g/ml HRP-Linked
Caprine Anti-Rabbit IgG Polyclonal
Antibody
(Catalog: SAA544Rb19)

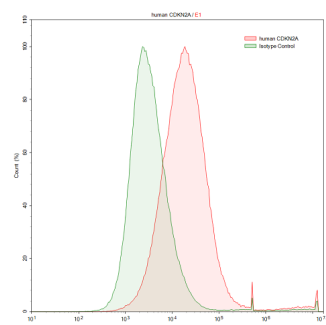


Western Blot; Samples: Lane1: Hela
cell lysate; Lane2: MCF7 cell lysate;
Lane3: HepG2 cell lysate;
Primary Ab: 0.05µg/ml Rabbit Anti-
Human CDKN2A Antibody
Second Ab: 0.2µg/ml HRP-Linked
Caprine Anti-Rabbit IgG Polyclonal
Antibody
(Catalog: SAA544Rb19)



FITC staining on IF;
Samples: Human MCF7 cell;
Primary Ab: 20µg/ml Rabbit Anti-
Human CDKN2A Antibody
Second Ab: 0.75µg/ml FITC-Linked
Caprine Anti-Rabbit IgG Polyclonal
Antibody

AF488 staining on IF;
Sample: Hela cell
Primary Ab: 20µg/ml Rabbit Anti-
Human CDKN2A Antibody
Second Ab: 2?g/ml AF488-Linked
Caprine Anti-Rabbit IgG Polyclonal
Antibody



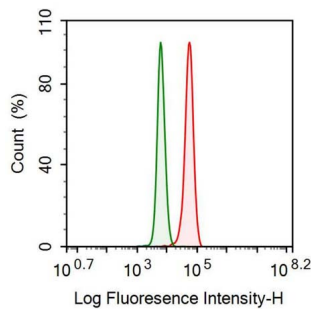
HepG2 human hepatocellular
carcinoma cell line was stained with
rabbit Anti-human CDKN2A Polyclonal
Antibody (Catalog # PAA794Hu01,
filled red histogram) or Isotype control
antibody (Catalog # IS067-Rb01, filled
green histogram)

(Catalog: SAA544Rb18)

(Catalog: SAA544Rb11)

green histogram), followed by APC-conjugated Anti-rabbit IgG Secondary Antibody (Catalog # SAA544Rb15).

Cells were fixed with 4% paraformaldehyde and permeabilized with 0.1% Triton X-100.



Human Hela cell was fixed with 2% paraformaldehyde (10 min) , permeabilised with 0.1% BSA-Triton X-100, then stained with 20 µg/ml rabbit Anti-human CDKN2A Polyclonal Antibody (Catalog PAA794Hu01, red histogram) or Isotype control antibody (Catalog IS067-Rb01, green histogram), followed by 1 µg/ml FITC-conjugated Anti-rabbit IgG Secondary Antibody (Catalog SAA544Rb18).

[IMPORTANT NOTE]

The kit is designed for research use only, we will not be responsible for any issue if the kit was used in clinical diagnostic or any other procedures.