

PAA818Mu01

Polyclonal Antibody to Death receptor 5 (DR5)

Organism Species: *Mus musculus* (Mouse)

Instruction manual

FOR RESEARCH USE ONLY

NOT FOR USE IN CLINICAL DIAGNOSTIC PROCEDURES

13th Edition (Revised in Aug, 2023)

[PROPERTIES]

Source: Polyclonal antibody preparation

Host: Rabbit

Purification: Antigen-specific affinity chromatography followed by Protein A affinity chromatography

Traits: Liquid

Concentration: 0.5mg/mL

UOM: 100μL

Cross Reactivity: Human;Porcine

Applications: WB; IHC

[IMMUNOGEN]

Immunogen: Recombinant DR5 (Asp233~Ala367 (Accession # Q9QZM4)) expressed in *E.coli*

Accession No.: RPA818Mu01

[APPLICATIONS]

Western blotting: 0.01-2μg/mL;

Immunohistochemistry: 5-20μg/mL;

Optimal working dilutions must be determined by end user.

[FORMULATION]

Form & Buffer: Supplied as solution form in 0.01M PBS, pH7.4, containing 0.05% Proclin-300, 50% glycerol.

[STORAGE AND STABILITY]

Storage: Avoid repeated freeze/thaw cycles.

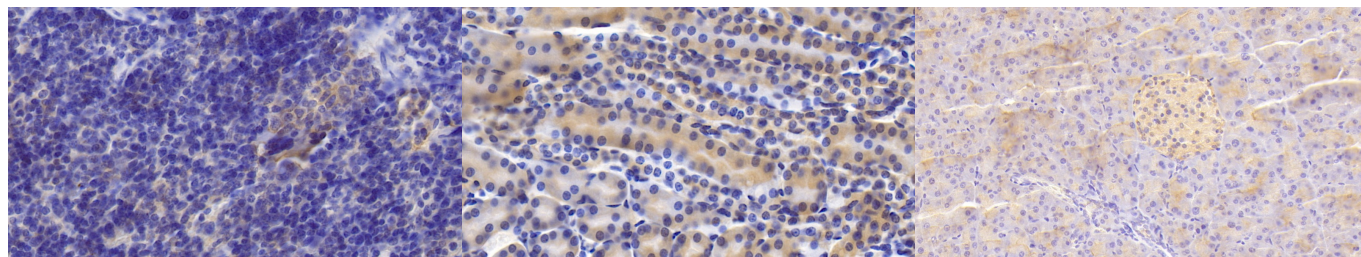
Store at 4°C for frequent use.

Aliquot and store at -20°C for 24 months.

Stability Test: The thermal stability is described by the loss rate. The loss rate was determined by accelerated thermal degradation test, that is, incubate the protein at 37°C for 48h, and no obvious degradation and precipitation were observed. The loss rate is less than 5% within the

expiration date under appropriate storage condition.

[IDENTIFICATION]



DAB staining on IHC-P; Samples:

Mouse Spleen Tissue; Primary Ab:

20µg/ml Rabbit Anti-Mouse

TNFRSF10B Antibody Second Ab:

2µg/mL HRP-Linked Caprine Anti-

Rabbit IgG Polyclonal Antibody

(Catalog: SAA544Rb19)

DAB staining on IHC-P;

Samples: Mouse Kidney Tissue;

Primary Ab: 20µg/ml Rabbit Anti-Mouse Primary Ab: 20?g/ml Rabbit Anti-Mouse

TNFRSF10B Antibody

Second Ab: 2µg/mL HRP-Linked

Caprine Anti-Rabbit IgG Polyclonal

Antibody

(Catalog: SAA544Rb19)

DAB staining on IHC-P;

Samples: Mouse Pancreas Tissue;

Primary Ab: 20?g/ml Rabbit Anti-Mouse

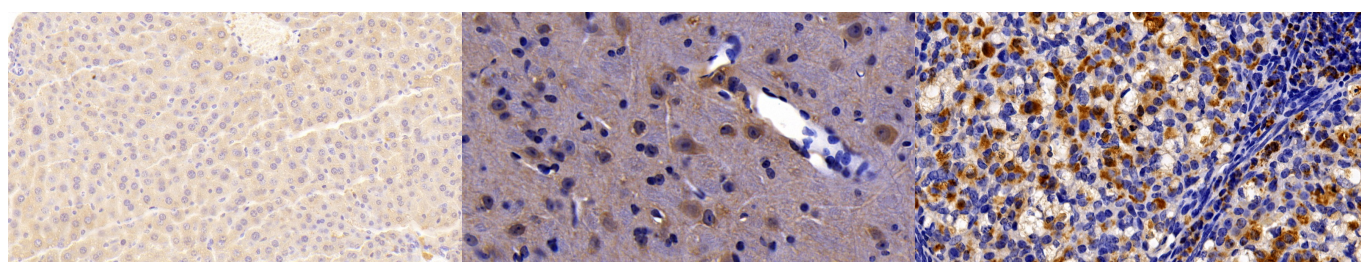
TNFRSF10B Antibody

Second Ab: 2µg/mL HRP-Linked

Caprine Anti-Rabbit IgG Polyclonal

Antibody

(Catalog: SAA544Rb19)



DAB staining on IHC-P;

Samples: Mouse Liver Tissue;

Primary Ab: 20?g/ml Rabbit Anti-Mouse Primary Ab: 20?g/ml Rabbit Anti-Mouse Primary Ab: 10µg/ml Rabbit Anti-Mouse

TNFRSF10B Antibody

Second Ab: 2µg/mL HRP-Linked

Caprine Anti-Rabbit IgG Polyclonal

Antibody

(Catalog: SAA544Rb19)

DAB staining on IHC-P;

Samples: Mouse Cerebrum Tissue;

Primary Ab: 20?g/ml Rabbit Anti-Mouse Primary Ab: 20?g/ml Rabbit Anti-Mouse Primary Ab: 10µg/ml Rabbit Anti-Mouse

TNFRSF10B Antibody

Second Ab: 2µg/mL HRP-Linked

Caprine Anti-Rabbit IgG Polyclonal

Antibody

(Catalog: SAA544Rb19)

DAB staining on IHC-P;

Sample: Mouse Ovary Tissue;

Primary Ab: 10µg/ml Rabbit Anti-Mouse

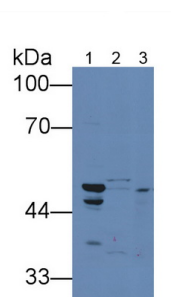
TNFRSF10B Antibody

Second Ab: 2µg/mL HRP-Linked

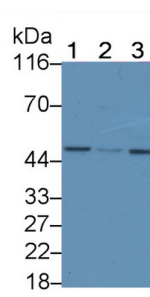
Caprine Anti-Rabbit IgG Polyclonal

Antibody

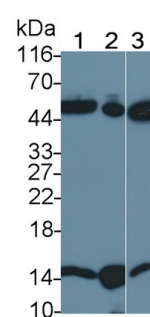
(Catalog: SAA544Rb19)



Western Blot; Sample: Lane1: Mouse Lung lysate; Lane2: Mouse Kidney lysate; Lane3: Fetal mouse lysate
 Primary Ab: 2µg/mL Rabbit Anti-Mouse TNFRSF10B-2 Antibody
 Second Ab: 0.2µg/mL HRP-Linked Caprine Anti-Rabbit IgG Polyclonal Antibody
 (Catalog: SAA544Rb19)



Western Blot; Sample: Lane1: HepG2 cell lysate; Lane2: SW480 cell lysate; Lane3: Sp2/0 cell lysate
 Primary Ab: 0.2µg/ml Rabbit Anti-Mouse DR5 Antibody
 Second Ab: 0.2µg/mL HRP-Linked Caprine Anti-Rabbit IgG Polyclonal Antibody
 (Catalog: SAA544Rb19)



Western Blot; Sample: Lane1: 3T3-L1 cell lysate; Lane2: Mouse Lymph node lysate; Lane3: Porcine Lymph node lysate
 Primary Ab: 0.4?g/ml Rabbit Anti-Mouse DR5 Antibody
 Second Ab: 0.2µg/mL HRP-Linked Caprine Anti-Rabbit IgG Polyclonal Antibody
 (Catalog: SAA544Rb19)

[**IMPORTANT NOTE**]

The kit is designed for research use only, we will not be responsible for any issue if the kit was used in clinical diagnostic or any other procedures.