

PAG764Hu01

Polyclonal Antibody to Discs, Large Homolog 3 (DLG3)

Organism Species: *Homo sapiens (Human)*

Instruction manual

FOR RESEARCH USE ONLY

NOT FOR USE IN CLINICAL DIAGNOSTIC PROCEDURES

13th Edition (Revised in Aug, 2023)

[PROPERTIES]

Source: Polyclonal antibody preparation

Host: Rabbit

Purification: Antigen-specific affinity chromatography followed by Protein A affinity chromatography

Traits: Liquid

Concentration: 0.5mg/mL

UOM: 100µL

Cross Reactivity: Mouse;Rat;Porcine.

Applications: WB; IHC

[IMMUNOGEN]

Immunogen: Recombinant DLG3 (Ala627~Glu802) expressed in *E.coli*

Accession No.: RPG764Hu01

[APPLICATIONS]

Western blotting: 0.01-2µg/mL;

Immunohistochemistry: 5-20µg/mL;

Optimal working dilutions must be determined by end user.

[FORMULATION]

Form & Buffer: Supplied as solution form in 0.01M PBS, pH7.4, containing 0.05% Proclin-300, 50% glycerol.

[STORAGE AND STABILITY]

Storage: Avoid repeated freeze/thaw cycles.

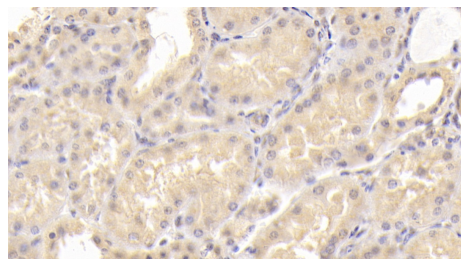
Store at 4°C for frequent use.

Aliquot and store at -20°C for 24 months.

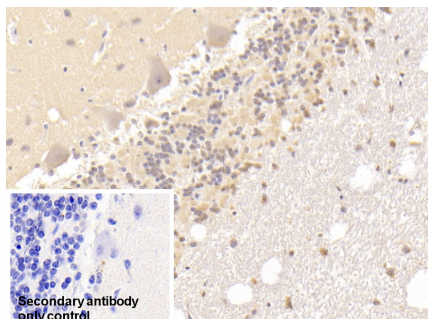
Stability Test: The thermal stability is described by the loss rate. The loss rate was determined by accelerated thermal degradation test, that is, incubate the protein at 37°C for 48h, and no obvious degradation and precipitation were observed. The loss rate is less than 5% within the

expiration date under appropriate storage condition.

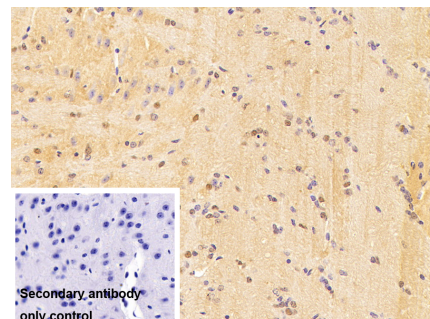
[IDENTIFICATION]



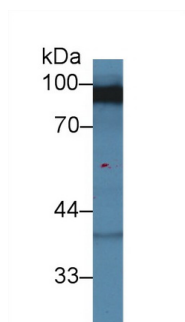
DAB staining on IHC-P; Samples:
Human Kidney Tissue; Primary Ab:
20 μ g/ml Rabbit Anti-Human DLG3
Antibody Second Ab: 2 μ g/mL HRP-
Linked Caprine Anti-Rabbit IgG
Polyclonal Antibody (Catalog:
SAA544Rb19)



DAB staining on IHC-P;
Sample: Human Cerebellum Tissue
Primary Ab: 20 μ g/ml Rabbit Anti-
Human DLG3 Antibody
Control: Used PBS instead of primary
antibody
Second Ab: 2 μ g/ml HRP-Linked
Caprine Anti-Rabbit IgG Polyclonal
Antibody
(Catalog: SAA544Rb19)

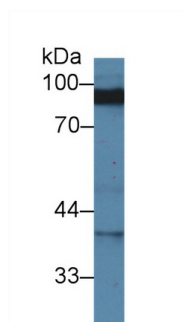


DAB staining on IHC-P;
Sample: Mouse Cerebrum Tissue
Primary Ab: 10 μ g/ml Rabbit Anti-
Human DLG3 Antibody
Control: Used PBS instead of primary
antibody
Second Ab: 2 μ g/ml HRP-Linked
Caprine Anti-Rabbit IgG Polyclonal
Antibody
(Catalog: SAA544Rb19)



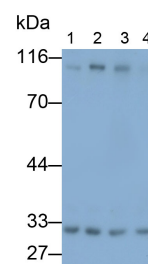
Western Blot; Sample: Rat Cerebrum
lysate;

Primary Ab: 2 μ g/ml Rabbit Anti-Human
DLG3 Antibody
Second Ab: 0.2 μ g/mL HRP-Linked
Caprine Anti-Rabbit IgG Polyclonal
Antibody
(Catalog: SAA544Rb19)



Western Blot; Sample: Porcine
Cerebrum lysate;

Primary Ab: 2 μ g/ml Rabbit Anti-Human
DLG3 Antibody
Second Ab: 0.2 μ g/mL HRP-Linked
Caprine Anti-Rabbit IgG Polyclonal
Antibody
(Catalog: SAA544Rb19)



Western Blot; Samples: Lane1: Porcine
Cerebrum lysate; Lane2: Rat Cerebrum
lysate; Lane3: Mouse Cerebrum lysate;
Lane4: Mouse Cerebellum lysate;
Primary Ab: 0.15 μ g/ml Rabbit Anti-
Human DLG3 Antibody
Second Ab: 0.2 μ g/mL HRP-Linked
Caprine Anti-Rabbit IgG Polyclonal
Antibody

[IMPORTANT NOTE]

The kit is designed for research use only, we will not be responsible for any issue if the kit was used in clinical diagnostic or any other procedures.