

PAA537Mu02

Polyclonal Antibody to Enolase, Neuron Specific (NSE)

Organism Species: *Mus musculus* (Mouse)

Instruction manual

FOR RESEARCH USE ONLY

NOT FOR USE IN CLINICAL DIAGNOSTIC PROCEDURES

13th Edition (Revised in Aug, 2023)

[PROPERTIES]

Source: Polyclonal antibody preparation

Host: Rabbit

Purification: Antigen-specific affinity chromatography followed by Protein A affinity chromatography

Traits: Liquid

Concentration: 0.5mg/ml

UOM: 100µl

Cross Reactivity: Human; Rat.

Applications: WB,IHC

[IMMUNOGEN]

Immunogen: Recombinant NSE (Ser2~Leu434) expressed in *E.coli*

Accession No.: RPA537Mu02

[APPLICATIONS]

Western blotting: 0.01-2µg/mL;

Immunohistochemistry: 5-20µg/mL;

Optimal working dilutions must be determined by end user.

[FORMULATION]

Form & Buffer: Supplied as solution form in 0.01M PBS, pH7.4, containing 0.05% Proclin-300, 50% glycerol.

[STORAGE AND STABILITY]

Storage: Avoid repeated freeze/thaw cycles.

Store at 4°C for frequent use.

Aliquot and store at -20°C for 24 months.

Stability Test: The thermal stability is described by the loss rate. The loss rate was determined by accelerated thermal degradation test, that is, incubate the protein at 37°C for 48h, and no obvious degradation and precipitation were observed. The loss rate is less than 5% within the

expiration date under appropriate storage condition.

[IDENTIFICATION]

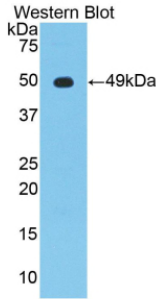
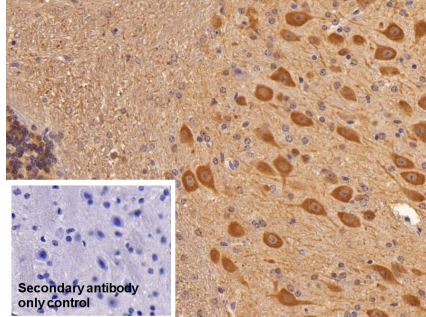


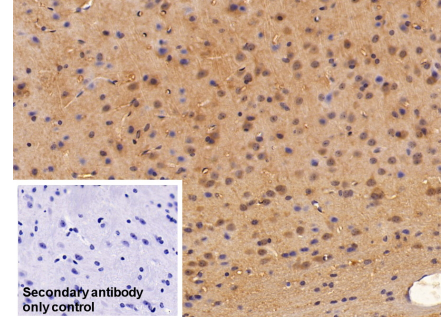
Figure. Western Blot; Sample:
Recombinant NSE, Mouse.



DAB staining on IHC-P;
Sample: Mouse Cerebellum Tissue;
Primary Ab: 10µg/ml Rabbit Anti-Mouse

NSE Antibody
Second Ab: 2µg/mL HRP-Linked
Caprine Anti-Rabbit IgG Polyclonal
Antibody
(Catalog: SAA544Rb19)

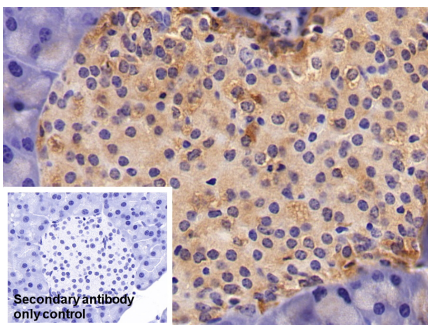
Secondary antibody only control: Used
PBS instead of primary antibody,
Second Ab: 2µg/mL HRP-Linked
Caprine Anti-Rabbit IgG Polyclonal
Antibody
(Catalog: SAA544Rb19)



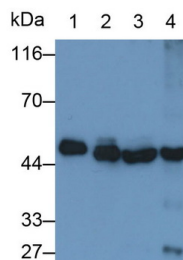
DAB staining on IHC-P;
Sample: Mouse Cerebrum Tissue;
Primary Ab: 10µg/ml Rabbit Anti-Mouse

NSE Antibody
Second Ab: 2µg/mL HRP-Linked
Caprine Anti-Rabbit IgG Polyclonal
Antibody
(Catalog: SAA544Rb19)

Secondary antibody only control: Used
PBS instead of primary antibody,
Second Ab: 2µg/mL HRP-Linked
Caprine Anti-Rabbit IgG Polyclonal
Antibody
(Catalog: SAA544Rb19)



DAB staining on IHC-P;
Sample: Mouse Pancreas Tissue;
Primary Ab: 10µg/ml Rabbit Anti-Mouse
NSE Antibody
Second Ab: 2µg/mL HRP-Linked



Western Blot; Sample: Lane1: Mouse
Cerebrum lysate; Lane2: Rat Cerebrum
lysate; Lane3: 293T cell lysate; Lane4:
HepG2 cell lysate
Primary Ab: 0.03µg/ml Rabbit Anti-

Caprine Anti-Rabbit IgG Polyclonal

Antibody

(Catalog: SAA544Rb19)

Secondary antibody only control: Used

PBS instead of primary antibody,

Second Ab: 2µg/mL HRP-Linked

Caprine Anti-Rabbit IgG Polyclonal

Antibody

(Catalog: SAA544Rb19)

Mouse NSE Antibody

Second Ab: 0.2µg/mL HRP-Linked

Caprine Anti-Rabbit IgG Polyclonal

Antibody

(Catalog: SAA544Rb19) Selected

[IMPORTANT NOTE]

The kit is designed for research use only, we will not be responsible for any issue if the kit was used in clinical diagnostic or any other procedures.