

**PAE975Mu01**

**Polyclonal Antibody to Eukaryotic Translation Initiation Factor 2 Alpha Kinase 3  
(EIF2aK3)**

**Organism Species: *Mus musculus* (Mouse)**

***Instruction manual***

**FOR RESEARCH USE ONLY**

**NOT FOR USE IN CLINICAL DIAGNOSTIC PROCEDURES**

---

13th Edition (Revised in Aug, 2023)

## **[ PROPERTIES ]**

**Source:** Polyclonal antibody preparation

**Host:** Rabbit

**Purification:** Antigen-specific affinity chromatography followed by Protein A affinity chromatography

**Traits:** Liquid

**Concentration:** 0.5mg/mL

**UOM:** 50µL

**Cross Reactivity:** Human; Porcine

**Applications:** WB; IHC; ICC; IP.

## **[ IMMUNOGEN ]**

**Immunogen:** Recombinant EIF2aK3 (Met973~Asn1114) expressed in *E.coli*

**Accession No.:** RPE975Mu01

## **[ APPLICATIONS ]**

Western blotting: 0.01-2µg/mL

Immunohistochemistry: 5-20µg/mL

Immunocytochemistry: 5-20µg/mL

Optimal working dilutions must be determined by end user.

## **[ FORMULATION ]**

**Form & Buffer:** Supplied as solution form in 0.01M PBS, pH7.4, containing 0.05% Proclin-300, 50% glycerol.

## **[ STORAGE AND STABILITY ]**

**Storage:** Avoid repeated freeze/thaw cycles.

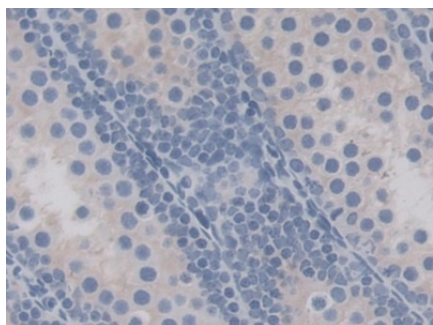
Store at 4°C for frequent use.

Aliquot and store at -20°C for 24 months.

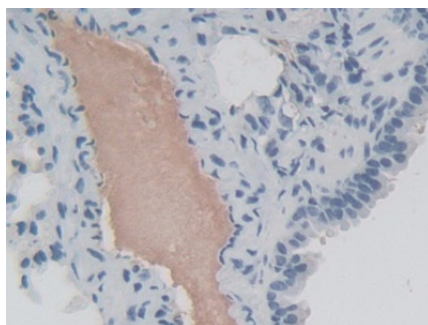
**Stability Test:** The thermal stability is described by the loss rate. The loss rate was determined by accelerated thermal degradation test, that is, incubate the protein at 37°C for 48h, and no

obvious degradation and precipitation were observed. The loss rate is less than 5% within the expiration date under appropriate storage condition.

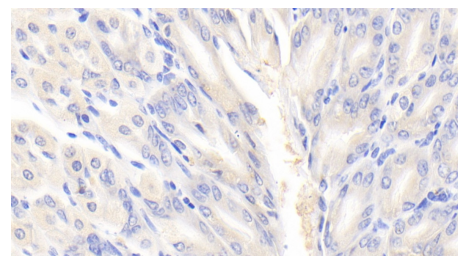
## [ IDENTIFICATION ]



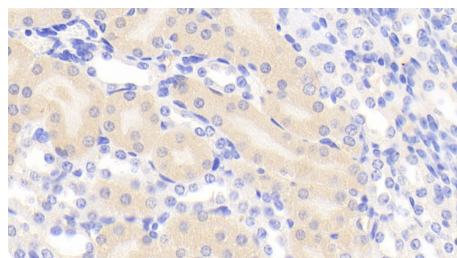
DAB staining on IHC-P; Samples: Mouse Testis Tissue; Primary Ab: 30µg/ml Rabbit Anti-Mouse EIF2aK3 Antibody Second Ab: 2µg/mL HRP-Linked Caprine Anti-Rabbit IgG Polyclonal Antibody (Catalog: SAA544Rb19)



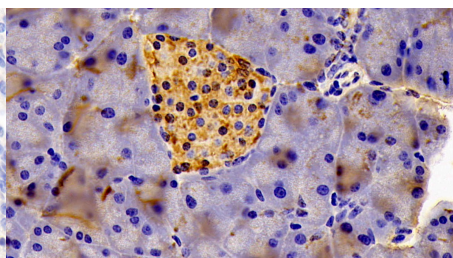
DAB staining on IHC-P; Samples: Mouse Lung Tissue; Primary Ab: 30µg/ml Rabbit Anti-Mouse EIF2aK3 Antibody Second Ab: 2µg/mL HRP-Linked Caprine Anti-Rabbit IgG Polyclonal Antibody (Catalog: SAA544Rb19)



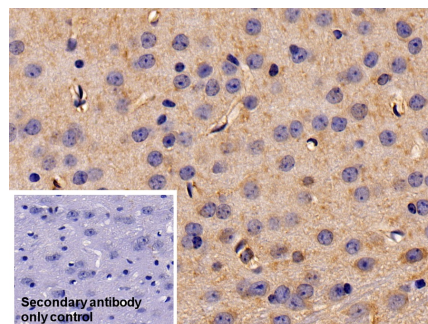
DAB staining on IHC-P; Samples: Mouse Stomach Tissue; Primary Ab: 20?g/ml Rabbit Anti-Mouse EIF2aK3 Antibody Second Ab: 2µg/mL HRP-Linked Caprine Anti-Rabbit IgG Polyclonal Antibody (Catalog: SAA544Rb19)



DAB staining on IHC-P; Samples: Mouse Kidney Tissue; Primary Ab: 20?g/ml Rabbit Anti-Mouse EIF2aK3 Antibody Second Ab: 2µg/mL HRP-Linked Caprine Anti-Rabbit IgG Polyclonal Antibody (Catalog: SAA544Rb19)

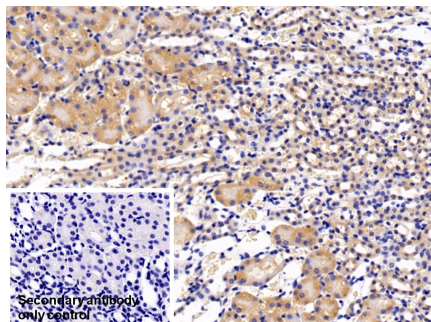


DAB staining on IHC-P; Sample: Mouse Pancreas Tissue; Primary Ab: 20?g/ml Rabbit Anti-Mouse EIF2aK3 Antibody Second Ab: 2µg/mL HRP-Linked Caprine Anti-Rabbit IgG Polyclonal Antibody (Catalog: SAA544Rb19)



DAB staining on IHC-P; Sample: Mouse Cerebrum Tissue Primary Ab: 20µg/ml Rabbit Anti-Mouse EIF2aK3 Antibody Control: Used PBS instead of primary antibody Second Ab: 2µg/ml HRP-Linked Caprine Anti-Rabbit IgG Polyclonal Antibody

(Catalog: SAA544Rb19)



DAB staining on IHC-P;

Sample: Mouse Kidney Tissue

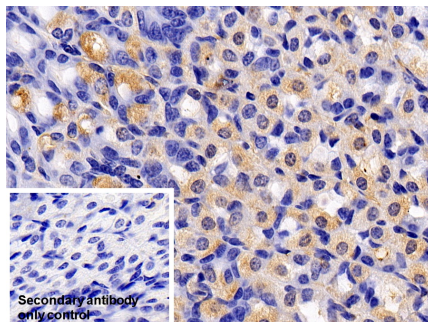
Primary Ab: 20µg/ml Rabbit Anti-Mouse

EIF2aK3 Antibody

Control: Used PBS instead of primary antibody

Second Ab: 2µg/ml HRP-Linked  
Caprine Anti-Rabbit IgG Polyclonal  
Antibody

(Catalog: SAA544Rb19)



DAB staining on IHC-P;

Sample: Mouse Stomach Tissue

Primary Ab: 20µg/ml Rabbit Anti-Mouse

EIF2aK3 Antibody

Control: Used PBS instead of primary antibody

Second Ab: 2µg/ml HRP-Linked  
Caprine Anti-Rabbit IgG Polyclonal  
Antibody

(Catalog: SAA544Rb19)

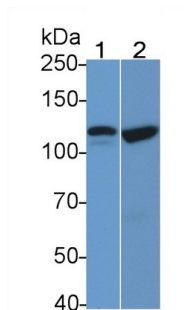


Western Blot; Sample: U87MG cell  
lysate

Primary Ab: 0.2µg/ml Rabbit Anti-  
Mouse EIF2aK3 Antibody

Second Ab: 0.2?g/ml HRP-Linked  
Caprine Anti-Rabbit IgG Polyclonal  
Antibody

(Catalog: SAA544Rb19)

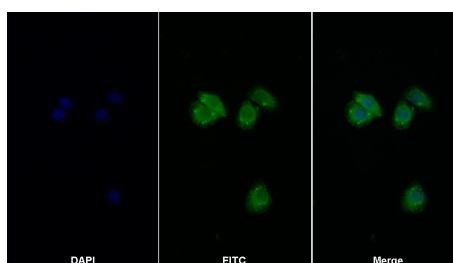


Western Blot; Sample: Lane1: Mouse  
Cerebrum lysate; Lane2: Porcine  
Cerebrum lysate

Primary Ab: 2µg/ml Rabbit Anti-Mouse  
EIF2aK3 Antibody

Second Ab: 0.2µg/mL HRP-Linked  
Caprine Anti-Rabbit IgG Polyclonal  
Antibody

(Catalog: SAA544Rb19)



FITC staining on IF;

Sample: HeLa cell

Primary Ab: 20µg/ml Rabbit Anti-Mouse  
EIF2aK3 Antibody

Second Ab: 2µg/ml FITC-Linked  
Caprine Anti-Rabbit IgG Polyclonal  
Antibody

(Catalog: SAA544Rb11)

**[ IMPORTANT NOTE ]**

The kit is designed for research use only, we will not be responsible for any issue if the kit was used in clinical diagnostic or any other procedures.