

PAC258Hu01

Polyclonal Antibody to Exportin 1 (XPO1)

Organism Species: *Homo sapiens (Human)*

Instruction manual

FOR RESEARCH USE ONLY

NOT FOR USE IN CLINICAL DIAGNOSTIC PROCEDURES

13th Edition (Revised in Aug, 2023)

[PROPERTIES]

Source: Polyclonal antibody preparation

Host: Rabbit

Purification: Antigen-specific affinity chromatography followed by Protein A affinity chromatography

Traits: Liquid

Concentration: 0.5mg/mL

UOM: 100µL

Cross Reactivity: Porcine

Applications: WB; IHC; FCM

[IMMUNOGEN]

Immunogen: Recombinant XPO1 (Thr917~Asp1071) expressed in *E.coli*

Accession No.: RPC258Hu01

[APPLICATIONS]

Western blotting: 0.01-2?g/mL;

Immunohistochemistry: 5-20?g/mL;

Flow cytometry: 20?g/mL;

Optimal working dilutions must be determined by end user.

[FORMULATION]

Form & Buffer: Supplied as solution form in 0.01M PBS, pH7.4, containing 0.05% Proclin-300, 50% glycerol.

[STORAGE AND STABILITY]

Storage: Avoid repeated freeze/thaw cycles.

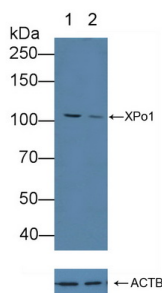
Store at 4°C for frequent use.

Aliquot and store at -20°C for 24 months.

Stability Test: The thermal stability is described by the loss rate. The loss rate was determined by accelerated thermal degradation test, that is, incubate the protein at 37°C for 48h, and no

obvious degradation and precipitation were observed. The loss rate is less than 5% within the expiration date under appropriate storage condition.

[IDENTIFICATION]



Knockout Verification:

Lane 1: Wild-type HeLa cell lysate;

Lane 2: XPO1 knockout HeLa cell lysate;

Predicted MW: 123kd

Observed MW: 110kd

Primary Ab: 1µg/ml Rabbit Anti-Human

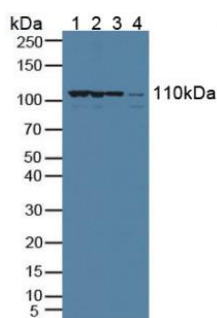
XPO1 Antibody

Second Ab: 0.2µg/mL HRP-Linked

Caprine Anti-Rabbit IgG Polyclonal

Antibody

(Catalog: SAA544Rb19)



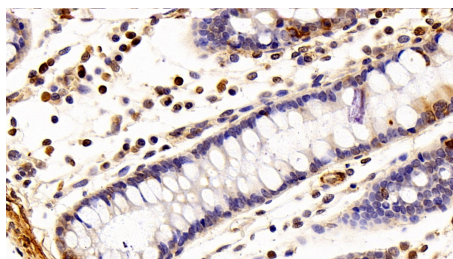
Western Blot; Sample: Lane1: HeLa cell lysate; Lane2: K562 cell lysate; Lane3:

Human Lung lysate; Lane4: Porcine

Small intestine lysate

Primary Ab: 1µg/ml Rabbit Anti-Human

XPO1 Antibody



DAB staining on IHC-P; Sample:

Human Colon Tissue; Primary Ab:

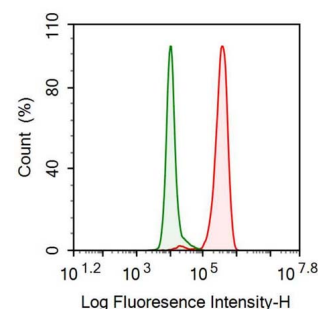
20µg/ml Rabbit Anti-Human XPO1

Antibody Second Ab: 2µg/mL HRP-

Linked Caprine Anti-Rabbit IgG

Polyclonal Antibody (Catalog:

SAA544Rb19)



Human K562 cell was fixed with 2% paraformaldehyde (10 min) ,

permeabilised with 0.2% BSA-Triton

X-100, then stained with 20µg/ml rabbit

Anti-human XPO1 Polyclonal Antibody

(Catalog PAC664Hu02, red histogram)

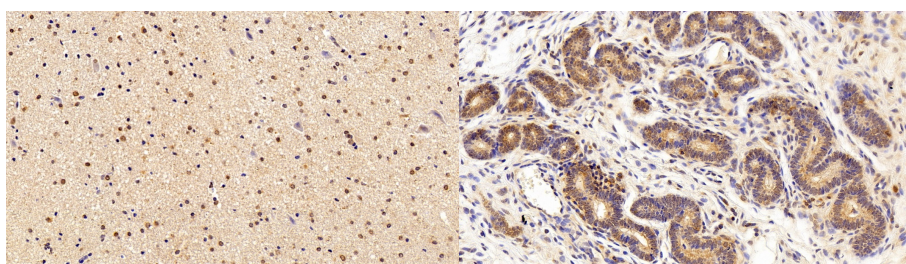
or Isotype control antibody (Catalog

IS067-Rb01, green histogram), followed

by 1µg/ml FITC-conjugated Anti-rabbit

IgG Secondary Antibody (Catalog

SAA544Rb18).



DAB staining on IHC-P;

Sample: Human Cerebrum Tissue;

Primary Ab: 20µg/ml Rabbit Anti-

Human XPO1 Antibody

Second Ab: 2µg/mL HRP-Linked

Caprine Anti-Rabbit IgG Polyclonal

Antibody

(Catalog: SAA544Rb19)

DAB staining on IHC-P;

Sample: Human Uterus Tissue;

Primary Ab: 20µg/ml Rabbit Anti-

Human XPO1 Antibody

Second Ab: 2µg/mL HRP-Linked

Caprine Anti-Rabbit IgG Polyclonal

Antibody

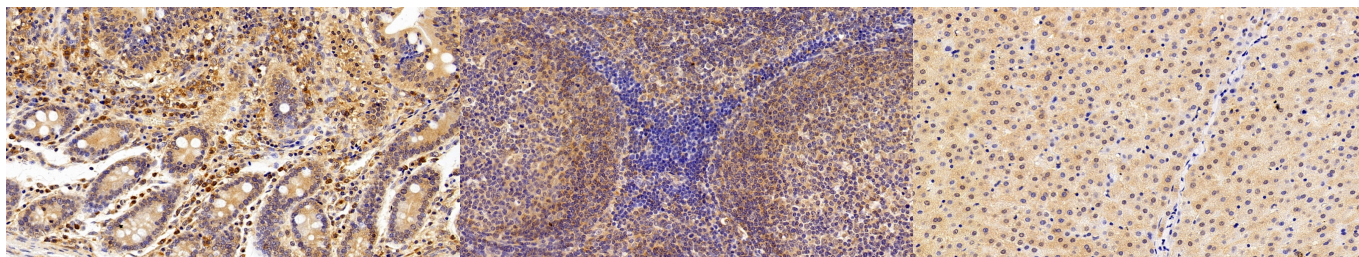
(Catalog: SAA544Rb19)

Second Ab: 0.2µg/mL HRP-Linked

Caprine Anti-Rabbit IgG Polyclonal

Antibody

(Catalog: SAA544Rb19)



DAB staining on IHC-P;

Sample: Human Small intestine Tissue;

Primary Ab: 20µg/ml Rabbit Anti-Human XPo1 Antibody

Second Ab: 2µg/mL HRP-Linked

Caprine Anti-Rabbit IgG Polyclonal

Antibody

(Catalog: SAA544Rb19)

DAB staining on IHC-P;

Sample: Human Lymph node Tissue;

Primary Ab: 20µg/ml Rabbit Anti-Human XPo1 Antibody

Second Ab: 2µg/mL HRP-Linked

Caprine Anti-Rabbit IgG Polyclonal

Antibody

(Catalog: SAA544Rb19)

DAB staining on IHC-P;

Sample: Human Liver Tissue;

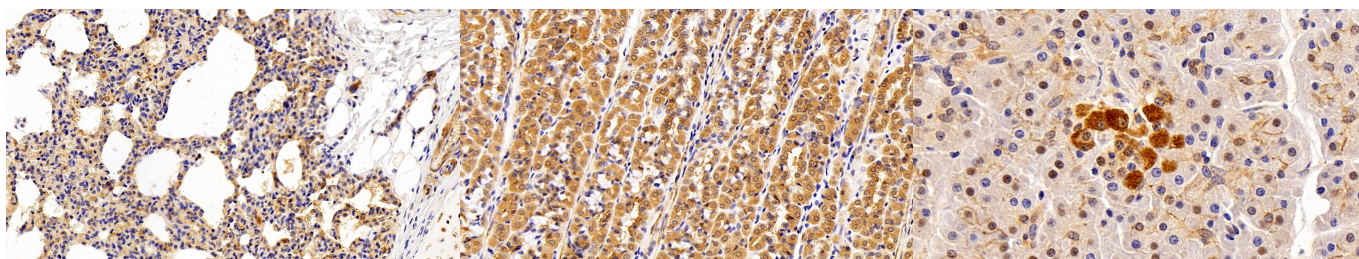
Primary Ab: 20µg/ml Rabbit Anti-Human XPo1 Antibody

Second Ab: 2µg/mL HRP-Linked

Caprine Anti-Rabbit IgG Polyclonal

Antibody

(Catalog: SAA544Rb19)



DAB staining on IHC-P;

Sample: Human Lung Tissue;

Primary Ab: 20µg/ml Rabbit Anti-Human XPo1 Antibody

Second Ab: 2µg/mL HRP-Linked

Caprine Anti-Rabbit IgG Polyclonal

Antibody

(Catalog: SAA544Rb19)

DAB staining on IHC-P;

Sample: Human Stomach Tissue;

Primary Ab: 20µg/ml Rabbit Anti-Human XPo1 Antibody

Second Ab: 2µg/mL HRP-Linked

Caprine Anti-Rabbit IgG Polyclonal

Antibody

(Catalog: SAA544Rb19)

DAB staining on IHC-P;

Sample: Human Pancreas Tissue;

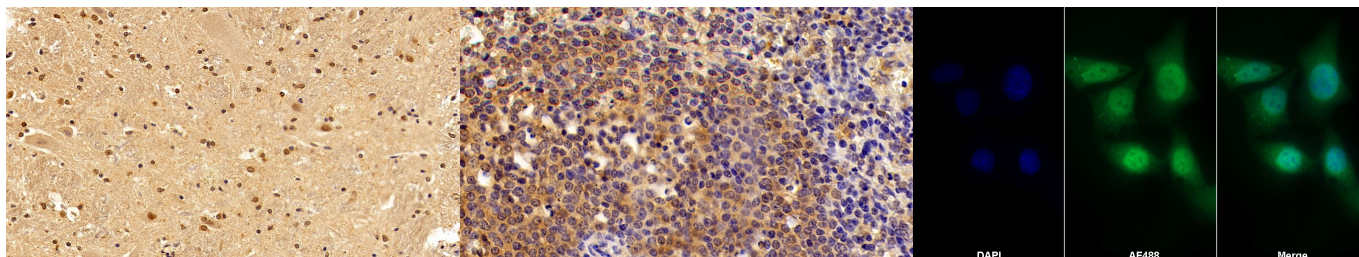
Primary Ab: 20µg/ml Rabbit Anti-Human XPo1 Antibody

Second Ab: 2µg/mL HRP-Linked

Caprine Anti-Rabbit IgG Polyclonal

Antibody

(Catalog: SAA544Rb19)



DAB staining on IHC-P;

Sample: Human Spinal cord Tissue;

Primary Ab: 20µg/ml Rabbit Anti-
Human XPo1 Antibody

Second Ab: 2µg/mL HRP-Linked
Caprine Anti-Rabbit IgG Polyclonal
Antibody

(Catalog: SAA544Rb19)

DAB staining on IHC-P;

Sample: Human Spleen Tissue;

Primary Ab: 20µg/ml Rabbit Anti-
Human XPo1 Antibody

Second Ab: 2µg/mL HRP-Linked
Caprine Anti-Rabbit IgG Polyclonal
Antibody

(Catalog: SAA544Rb19)

AF488 staining on IF;

Sample: HeLa cell

Primary Ab: 20µg/ml Rabbit Anti-
Human XPo1 Antibody

Second Ab: 2µg/mL AF488-Linked
Caprine Anti-Rabbit IgG Polyclonal
Antibody

(Catalog: SAA544Rb11)

[**IMPORTANT NOTE**]

The kit is designed for research use only, we will not be responsible for any issue if the kit was used in clinical diagnostic or any other procedures.