

**PAA193Bo01**

**Polyclonal Antibody to Fibrinogen (FG)**

**Organism Species: *Bos taurus*; Bovine (Cattle)**

***Instruction manual***

FOR RESEARCH USE ONLY

NOT FOR USE IN CLINICAL DIAGNOSTIC PROCEDURES

---

13th Edition (Revised in Aug, 2023)

**[ PROPERTIES ]**

**Source:** Polyclonal antibody preparation

**Host:** Rabbit

**Purification:** Antigen-specific affinity chromatography followed by Protein A affinity chromatography

**Traits:** Liquid

**Concentration:** 0.5mg/ml

**UOM:** 200µl

**Cross Reactivity:** N/A

**Applications:** WB; IHC; ICC; IP.

**[ IMMUNOGEN ]**

**Immunogen:** Native Fibrinogen

**Accession No.:** NPA193Bo01

**[ APPLICATIONS ]**

Western blotting: 0.01-2µg/mL;

Immunohistochemistry: 5-20µg/mL;

Immunocytochemistry: 5-20µg/mL;

Optimal working dilutions must be determined by end user.

**[ FORMULATION ]**

**Form & Buffer:** Supplied as solution form in 0.01M PBS, pH7.4, containing 0.05% Proclin-300, 50% glycerol.

**[ STORAGE AND STABILITY ]**

**Storage:** Avoid repeated freeze/thaw cycles.

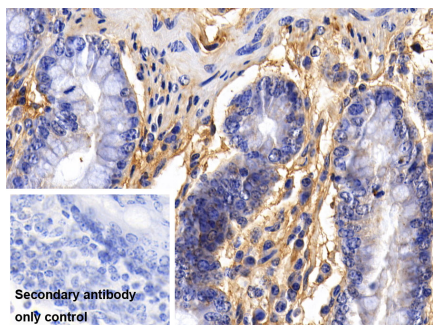
Store at 4°C for frequent use.

Aliquot and store at -20°C for 24 months.

**Stability Test:** The thermal stability is described by the loss rate. The loss rate was determined by accelerated thermal degradation test, that is, incubate the protein at 37°C for 48h, and no

obvious degradation and precipitation were observed. The loss rate is less than 5% within the expiration date under appropriate storage condition.

### [ IDENTIFICATION ]



DAB staining on IHC-P;

Sample: Bovine Colon Tissue

Primary Ab: 20µg/ml Rabbit Anti-Bovine FG Antibody

Control: Used PBS instead of primary

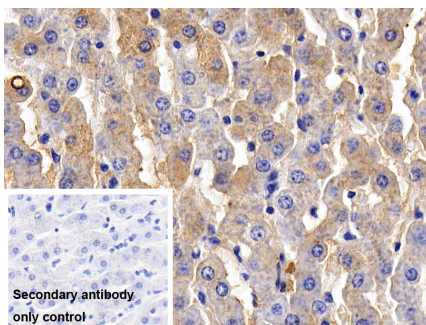
antibody

Second Ab: 2?g/ml HRP-Linked

Caprine Anti-Rabbit IgG Polyclonal

Antibody

(Catalog: SAA544Rb19)



DAB staining on IHC-P;

Sample: Bovine Liver Tissue

Primary Ab: 20µg/ml Rabbit Anti-Bovine FG Antibody

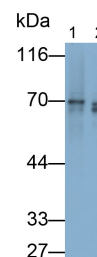
Control: Used PBS instead of primary antibody

Second Ab: 2?g/ml HRP-Linked

Caprine Anti-Rabbit IgG Polyclonal

Antibody

(Catalog: SAA544Rb19)



Western Blot; Samples: Lane1: Bovine

Liver lysate; Lane2: Bovine Kidney

lysate;

Primary Ab: 0.02µg/ml Rabbit Anti-Bovine FG Antibody

Second Ab: 0.2?g/ml HRP-Linked Caprine Anti-Rabbit IgG Polyclonal

Antibody

(Catalog: SAA544Rb19)

### [ IMPORTANT NOTE ]

The kit is designed for research use only, we will not be responsible for any issue if the kit was used in clinical diagnostic or any other procedures.