

**PAB799Mu01**

**Polyclonal Antibody to Fibroblast Growth Factor Receptor 4 (FGFR4)**

**Organism Species: *Mus musculus* (Mouse)**

***Instruction manual***

FOR RESEARCH USE ONLY

NOT FOR USE IN CLINICAL DIAGNOSTIC PROCEDURES

---

13th Edition (Revised in Aug, 2023)

## **[ PROPERTIES ]**

**Source:** Polyclonal antibody preparation

**Host:** Rabbit

**Purification:** Antigen-specific affinity chromatography followed by Protein A affinity chromatography

**Traits:** Liquid

**Concentration:** 0.27mg/mL

**UOM:** 20µL

**Cross Reactivity:** N/A

**Applications:** WB; IHC; ICC; IP.

## **[ IMMUNOGEN ]**

**Immunogen:** Recombinant FGFR4 (Val165~Asp366) expressed in *E.coli*

**Accession No.:** RPB799Mu01

## **[ APPLICATIONS ]**

Western blotting: 0.01-3µg/mL;

Immunohistochemistry: 5-20µg/mL;

Immunofluorescence: 5-20µg/mL;

Optimal working dilutions must be determined by end user.

## **[ FORMULATION ]**

**Form & Buffer:** Supplied as solution form in PBS, pH7.4, containing 0.02% NaN<sub>3</sub>, 50% glycerol.

## **[ STORAGE AND STABILITY ]**

**Storage:** Avoid repeated freeze/thaw cycles.

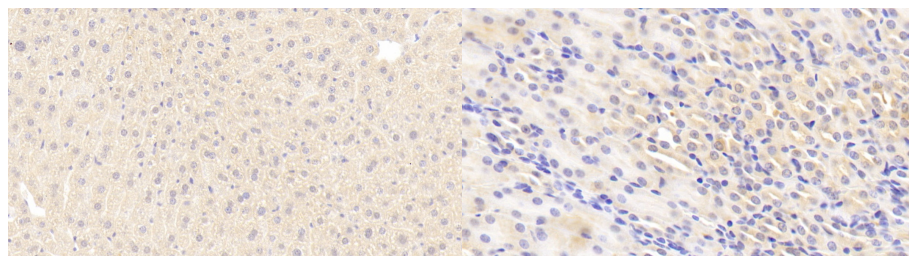
Store at 4°C for frequent use.

Aliquot and store at -20°C for 24 months.

**Stability Test:** The thermal stability is described by the loss rate. The loss rate was determined by accelerated thermal degradation test, that is, incubate the protein at 37°C for 48h, and no

obvious degradation and precipitation were observed. The loss rate is less than 5% within the expiration date under appropriate storage condition.

## [ IDENTIFICATION ]

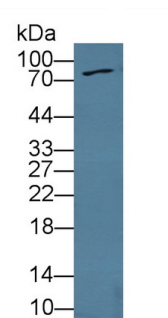


DAB staining on IHC-P; Samples:

Mouse Liver Tissue; Primary Ab:  
20 $\mu$ g/ml Rabbit Anti-Mouse FGFR4  
Antibody Second Ab: 2 $\mu$ g/mL HRP-  
Linked Caprine Anti-Rabbit IgG  
Polyclonal Antibody (Catalog:  
SAA544Rb19)

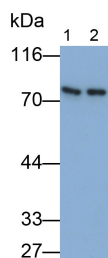
DAB staining on IHC-P;

Samples: Mouse Kidney Tissue;  
Primary Ab: 20 $\mu$ g/ml Rabbit Anti-Mouse  
FGFR4 Antibody  
Second Ab: 2 $\mu$ g/mL HRP-Linked  
Caprine Anti-Rabbit IgG Polyclonal  
Antibody  
(Catalog: SAA544Rb19)



Western Blot; Sample: Mouse

Cerebrum lysate;  
Primary Ab: 3 $\mu$ g/ml Rabbit Anti-Mouse  
FGFR4 Antibody  
Second Ab: 0.2 $\mu$ g/mL HRP-Linked  
Caprine Anti-Rabbit IgG Polyclonal  
Antibody  
(Catalog: SAA544Rb19)



Western Blot; Samples: Lane1: Rat

Cerebellum lysate; Lane2: Mouse  
Cerebellum lysate;

Primary Ab: 0.3 $\mu$ g/ml Rabbit Anti-  
Mouse FGFR4 Antibody

Second Ab: 0.2 $\mu$ g/ml HRP-Linked  
Caprine Anti-Rabbit IgG Polyclonal  
Antibody

(Catalog: SAA544Rb19)

**[ IMPORTANT NOTE ]**

The kit is designed for research use only, we will not be responsible for any issue if the kit was used in clinical diagnostic or any other procedures.