

PAA786Mu01

Polyclonal Antibody to Ficolin 1 (FCN1)

Organism Species: *Mus musculus* (Mouse)

Instruction manual

FOR RESEARCH USE ONLY

NOT FOR USE IN CLINICAL DIAGNOSTIC PROCEDURES

13th Edition (Revised in Aug, 2023)

[PROPERTIES]

Source: Polyclonal antibody preparation

Host: Rabbit

Purification: Antigen-specific affinity chromatography followed by Protein A affinity chromatography

Traits: Liquid

Concentration: 0.5mg/mL

UOM: 100μL

Cross Reactivity: N/A

Applications: WB; IHC; ICC; IP.

[IMMUNOGEN]

Immunogen: Recombinant FCN1 (Arg25~Gly317) expressed in *E.coli*

Accession No.: RPA786Mu01

[APPLICATIONS]

Western blotting: 0.01-2μg/mL;

Immunohistochemistry: 5-20μg/mL;

Immunocytochemistry: 5-20μg/mL;

Optimal working dilutions must be determined by end user.

[FORMULATION]

Form & Buffer: Supplied as solution form in 0.01M PBS, pH7.4, containing 0.05% Proclin-300, 50% glycerol.

[STORAGE AND STABILITY]

Storage: Avoid repeated freeze/thaw cycles.

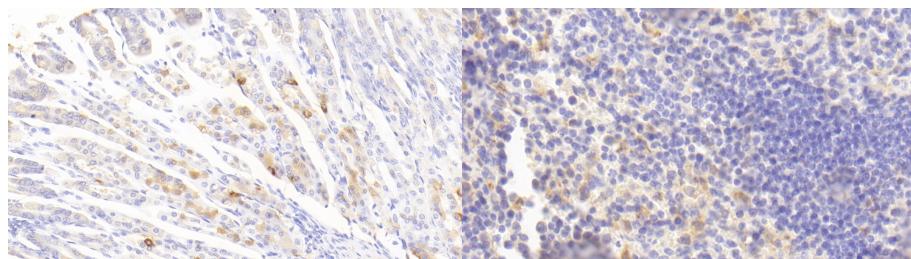
Store at 4°C for frequent use.

Aliquot and store at -20°C for 24 months.

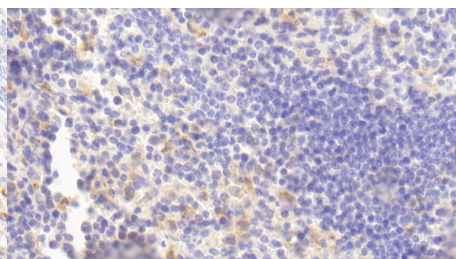
Stability Test: The thermal stability is described by the loss rate. The loss rate was determined by accelerated thermal degradation test, that is, incubate the protein at 37°C for 48h, and no

obvious degradation and precipitation were observed. The loss rate is less than 5% within the expiration date under appropriate storage condition.

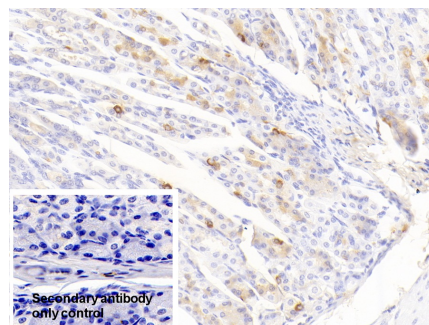
[IDENTIFICATION]



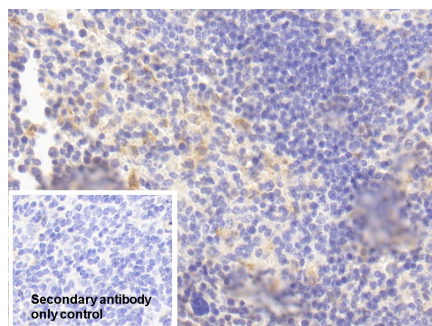
DAB staining on IHC-P; Samples:
Mouse Stomach Tissue; Primary Ab:
20?g/ml Rabbit Anti-Mouse FCN1
Antibody Second Ab: 2µg/mL HRP-
Linked Caprine Anti-Rabbit IgG
Polyclonal Antibody (Catalog:
SAA544Rb19)



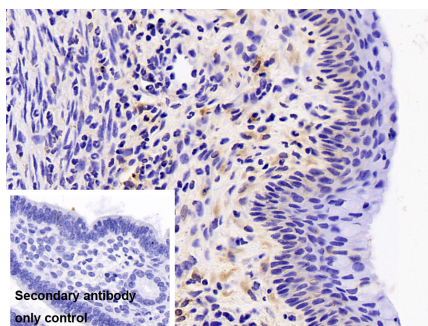
DAB staining on IHC-P;
Samples: Mouse Spleen Tissue;
Primary Ab: 20?g/ml Rabbit Anti-Mouse
FCN1 Antibody
Second Ab: 2µg/mL HRP-Linked
Caprine Anti-Rabbit IgG Polyclonal
Antibody
(Catalog: SAA544Rb19)



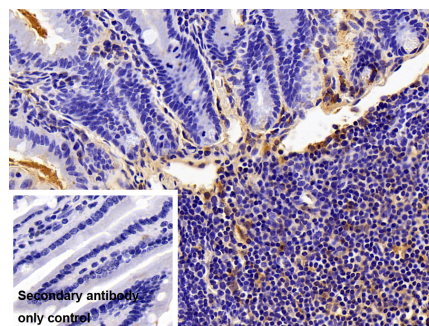
DAB staining on IHC-P;
Sample: Mouse Stomach Tissue
Primary Ab: 20µg/ml Rabbit Anti-Mouse
FCN1 Antibody
Control: Used PBS instead of primary
antibody
Second Ab: 2µg/ml HRP-Linked
Caprine Anti-Rabbit IgG Polyclonal
Antibody
(Catalog: SAA544Rb19)



DAB staining on IHC-P;
Sample: Mouse Spleen Tissue
Primary Ab: 20µg/ml Rabbit Anti-Mouse
FCN1 Antibody
Control: Used PBS instead of primary
antibody
Second Ab: 2µg/ml HRP-Linked



DAB staining on IHC-P;
Sample: Mouse Uterus Tissue
Primary Ab: 10µg/ml Rabbit Anti-Mouse
FCN1 Antibody
Control: Used PBS instead of primary
antibody
Second Ab: 2?g/ml HRP-Linked

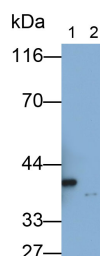


DAB staining on IHC-P;
Sample: Mouse Small intestine Tissue
Primary Ab: 10µg/ml Rabbit Anti-Mouse
FCN1 Antibody
Control: Used PBS instead of primary
antibody
Second Ab: 2?g/ml HRP-Linked

Caprine Anti-Rabbit IgG Polyclonal

Antibody

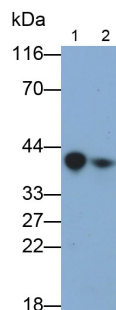
(Catalog: SAA544Rb19)



Caprine Anti-Rabbit IgG Polyclonal

Antibody

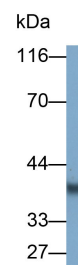
(Catalog: SAA544Rb19)



Caprine Anti-Rabbit IgG Polyclonal

Antibody

(Catalog: SAA544Rb19)



Western Blot; Samples: Lane1: Mouse Serum; Lane2: Rat Serum; Western Blot; Samples: Lane1: Mouse Serum; Lane2: Rat Kidney lysate; Western Blot; Sample: Mouse Spleen lysate

Serum; Lane2: Rat Serum;

Serum; Lane2: Rat Kidney lysate;

lysate

Primary Ab: 0.2µg/ml Rabbit Anti-Mouse FCN1 Antibody

Primary Ab: 0.2µg/ml Rabbit Anti-Mouse FCN1 Antibody

Primary Ab: 0.2µg/ml Rabbit Anti-Mouse FCN1 Antibody

Second Ab: 0.2?g/ml HRP-Linked

Second Ab: 0.2?g/ml HRP-Linked

Second Ab: 0.2?g/ml HRP-Linked

Caprine Anti-Rabbit IgG Polyclonal

Caprine Anti-Rabbit IgG Polyclonal

Caprine Anti-Rabbit IgG Polyclonal

Antibody

Antibody

Antibody

(Catalog: SAA544Rb19)

(Catalog: SAA544Rb19)

(Catalog: SAA544Rb19)

[**IMPORTANT NOTE**]

The kit is designed for research use only, we will not be responsible for any issue if the kit was used in clinical diagnostic or any other procedures.