

PAA303Hu01

Polyclonal Antibody to Galectin 3 (GAL3)

Organism Species: *Homo sapiens (Human)*

Instruction manual

FOR RESEARCH USE ONLY

NOT FOR USE IN CLINICAL DIAGNOSTIC PROCEDURES

13th Edition (Revised in Aug, 2023)

[PROPERTIES]

Source: Polyclonal antibody preparation

Host: Rabbit

Purification: Antigen-specific affinity chromatography followed by Protein A affinity chromatography

Traits: Liquid

Concentration: 0.5mg/mL

UOM: 100µL

Cross Reactivity: Rat;Porcine

Applications: WB; IHC; IF

[IMMUNOGEN]

Immunogen: Recombinant GAL3 (Met1~Ile250) expressed in *E.coli*

Accession No.: RPA303Hu01

[APPLICATIONS]

Western blotting: 0.1-2µg/mL;

Immunohistochemistry: 5-20µg/mL;

Immunofluorescence:5-20µg/mL;

Optimal working dilutions must be determined by end user.

[FORMULATION]

Form & Buffer: Supplied as solution form in PBS, pH7.4, containing 0.02% NaN₃, 50% glycerol.

[STORAGE AND STABILITY]

Storage: Avoid repeated freeze/thaw cycles.

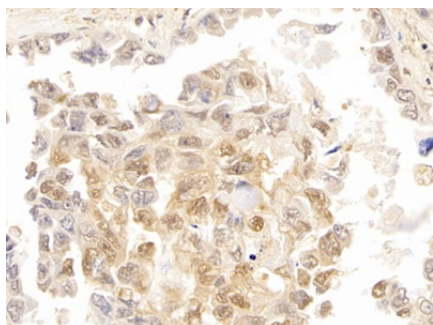
Store at 4°C for frequent use.

Aliquot and store at -20°C for 24 months.

Stability Test: The thermal stability is described by the loss rate. The loss rate was determined by accelerated thermal degradation test, that is, incubate the protein at 37°C for 48h, and no

obvious degradation and precipitation were observed. The loss rate is less than 5% within the expiration date under appropriate storage condition.

[IDENTIFICATION]



DAB staining on IHC-P;

Samples: Human Lung cancer Tissue;

Primary Ab: 10ug/ml Rabbit Anti-

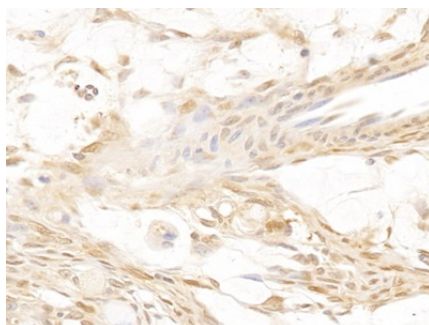
Human GAL3 Antibody

Second Ab: 2µg/mL HRP-Linked

Caprine Anti-Rabbit IgG Polyclonal

Antibody

(Catalog: SAA544Rb19)



DAB staining on IHC-P;

Samples: Human Ovarian cancer

Tissue;

Primary Ab: 10ug/ml Rabbit Anti-

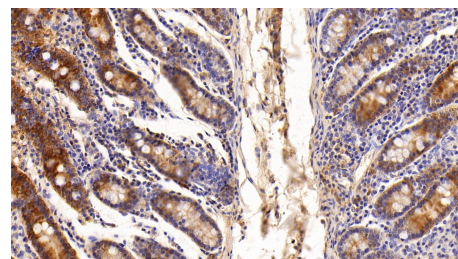
Human GAL3 Antibody

Second Ab: 2µg/mL HRP-Linked

Caprine Anti-Rabbit IgG Polyclonal

Antibody

(Catalog: SAA544Rb19)



DAB staining on IHC-P;

Sample: Porcine Small intestine Tissue;

Primary Ab: 10?g/ml Rabbit Anti-

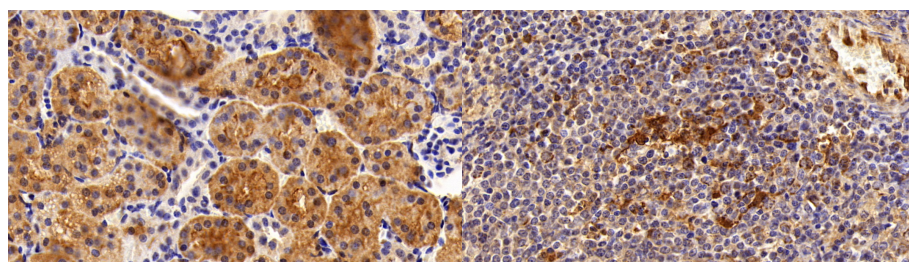
Human GAL3 Antibody

Second Ab: 2µg/mL HRP-Linked

Caprine Anti-Rabbit IgG Polyclonal

Antibody

(Catalog: SAA544Rb19)



DAB staining on IHC-P;

Sample: Porcine Kidney Tissue;

Primary Ab: 10?g/ml Rabbit Anti-

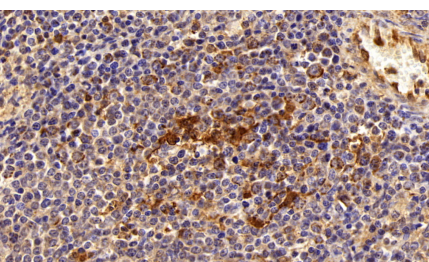
Human GAL3 Antibody

Second Ab: 2µg/mL HRP-Linked

Caprine Anti-Rabbit IgG Polyclonal

Antibody

(Catalog: SAA544Rb19)



DAB staining on IHC-P;

Sample: Porcine Spleen Tissue;

Primary Ab: 10?g/ml Rabbit Anti-

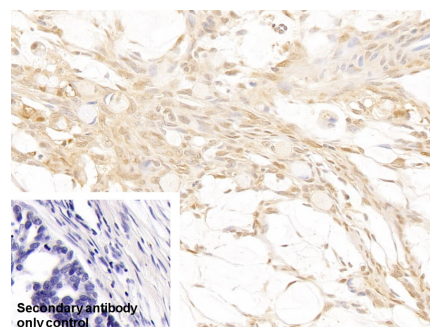
Human GAL3 Antibody

Second Ab: 2µg/mL HRP-Linked

Caprine Anti-Rabbit IgG Polyclonal

Antibody

(Catalog: SAA544Rb19)



DAB staining on IHC-P;

Sample: Human Ovarian cancer Tissue

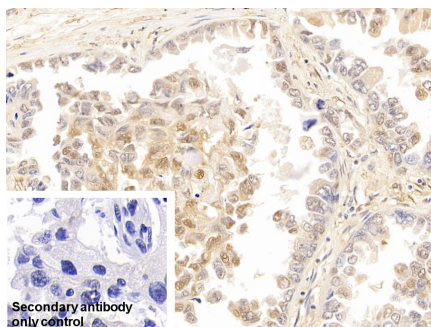
Primary Ab: 10µg/ml Rabbit Anti-

Human GAL3 Antibody

Control: Used PBS instead of primary
antibody

Second Ab: 2µg/ml HRP-Linked

Caprine Anti-Rabbit IgG Polyclonal



DAB staining on IHC-P;

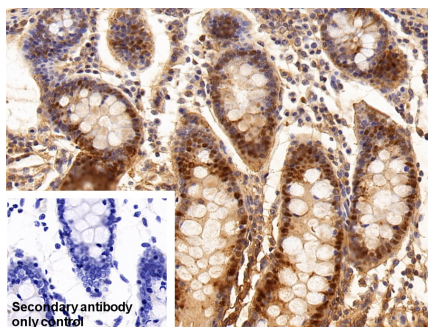
Sample: Human Lung cancer Tissue

Primary Ab: 10µg/ml Rabbit Anti-Human GAL3 Antibody

Control: Used PBS instead of primary antibody

Second Ab: 2µg/ml HRP-Linked Caprine Anti-Rabbit IgG Polyclonal Antibody

(Catalog: SAA544Rb19)



DAB staining on IHC-P;

Sample: Porcine Colon Tissue

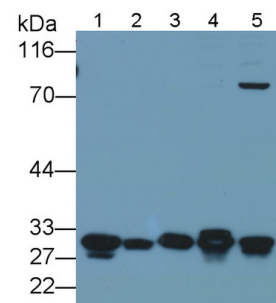
Primary Ab: 10µg/ml Rabbit Anti-Human GAL3 Antibody

Control: Used PBS instead of primary antibody

Second Ab: 2µg/ml HRP-Linked Caprine Anti-Rabbit IgG Polyclonal Antibody

(Catalog: SAA544Rb19)

Antibody
(Catalog: SAA544Rb19)



Western Blot; Sample: Lane1: Rat

Mammary gland lysate; Lane2: Rat

Small intestine lysate; Lane3: Rat Skin lysate; Lane4: Hela cell lysate; Lane5:

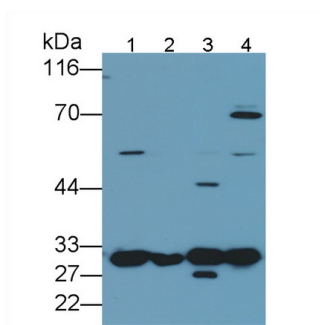
MCF7 cell lysate

Primary Ab: 0.2µg/ml Rabbit Anti-Human GAL3 Antibody

Second Ab: 0.2µg/mL HRP-Linked Caprine Anti-Rabbit IgG Polyclonal

Antibody

(Catalog: SAA544Rb19)

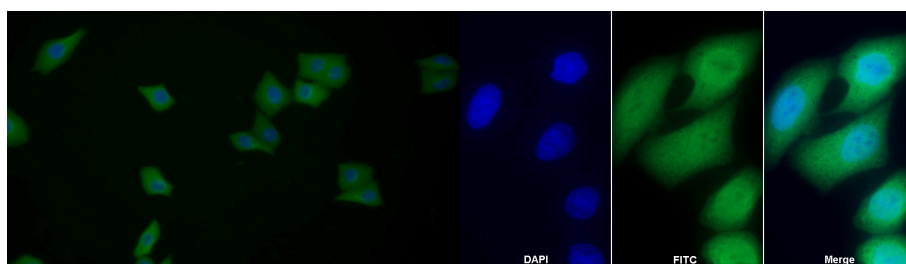


Western Blot; Sample: Lane1: Rat Lung lysate; Lane2: Rat Colon lysate; Lane3:

Rat Testis lysate; Lane4: A375 cell lysate

Primary Ab: 0.1µg/ml Rabbit Anti-Human GAL3 Antibody

Second Ab: 0.2µg/mL HRP-Linked Caprine Anti-Rabbit IgG Polyclonal



FITC staining on IF;

Samples: Human MCF7 cell;

Primary Ab: 20ug/ml Rabbit Anti-Human GAL3 Antibody

Second Ab: 1?g/ml FITC-Linked Caprine Anti-Rabbit IgG Polyclonal Antibody

(Catalog: SAA544Rb18)

Sample: MCF7 cell

Primary Ab: 20µg/ml Rabbit Anti-Human GAL3 Antibody

Second Ab: 2µg/ml FITC-Linked Caprine Anti-Rabbit IgG Polyclonal Antibody

(Catalog: SAA544Rb11)

Antibody

(Catalog: SAA544Rb19)

[IMPORTANT NOTE]

The kit is designed for research use only, we will not be responsible for any issue if the kit was used in clinical diagnostic or any other procedures.