

**PAA372Hu03**

**Polyclonal Antibody to Gelsolin (GSN)**

**Organism Species: *Homo sapiens (Human)***

***Instruction manual***

**FOR RESEARCH USE ONLY**

**NOT FOR USE IN CLINICAL DIAGNOSTIC PROCEDURES**

---

13th Edition (Revised in Aug, 2023)

## **[ PROPERTIES ]**

**Source:** Polyclonal antibody preparation

**Host:** Rabbit

**Purification:** Antigen-specific affinity chromatography followed by Protein A affinity chromatography

**Traits:** Liquid

**Concentration:** 0.5mg/mL

**UOM:** 100µL

**Cross Reactivity:** Rat;Porcine

**Applications:** WB; IHC; ICC; IP.

## **[ IMMUNOGEN ]**

**Immunogen:** Recombinant GSN (Asn674~Ala782) expressed in *E.coli*

**Accession No.:** RPA372Hu03

## **[ APPLICATIONS ]**

Western blotting: 0.01-5µg/mL;

Immunohistochemistry: 5-20µg/mL;

Immunocytochemistry: 5-20µg/mL;

Optimal working dilutions must be determined by end user.

## **[ FORMULATION ]**

**Form & Buffer:** Supplied as solution form in PBS, pH7.4, containing 0.02% NaN<sub>3</sub>, 50% glycerol.

## **[ STORAGE AND STABILITY ]**

**Storage:** Avoid repeated freeze/thaw cycles.

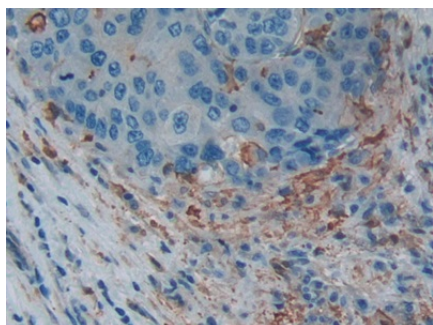
Store at 4°C for frequent use.

Aliquot and store at -20°C for 24 months.

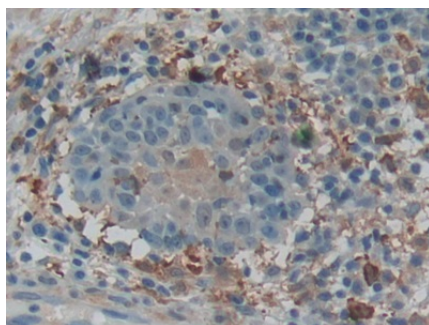
**Stability Test:** The thermal stability is described by the loss rate. The loss rate was determined by accelerated thermal degradation test, that is, incubate the protein at 37°C for 48h, and no

obvious degradation and precipitation were observed. The loss rate is less than 5% within the expiration date under appropriate storage condition.

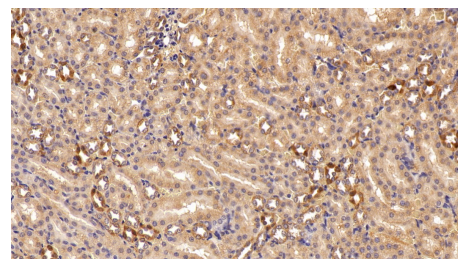
## [ IDENTIFICATION ]



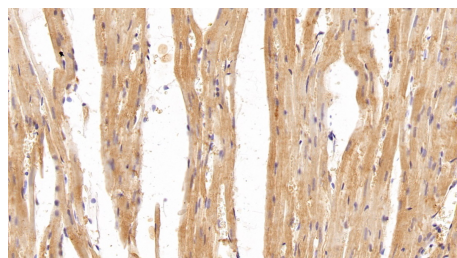
DAB staining on IHC-P; Samples:  
Human Liver cancer Tissue; Primary  
Ab: 10µg/ml Rabbit Anti-Human GS  
Antibody Second Ab: 2µg/mL HRP-  
Linked Caprine Anti-Rabbit IgG  
Polyclonal Antibody (Catalog:  
SAA544Rb19)



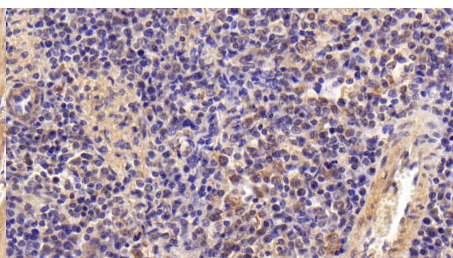
DAB staining on IHC-P;  
Samples: Human Skin cancer Tissue;  
Primary Ab: 10µg/ml Rabbit Anti-  
Human GS Antibody  
Second Ab: 2µg/mL HRP-Linked  
Caprine Anti-Rabbit IgG Polyclonal  
Antibody  
(Catalog: SAA544Rb19)



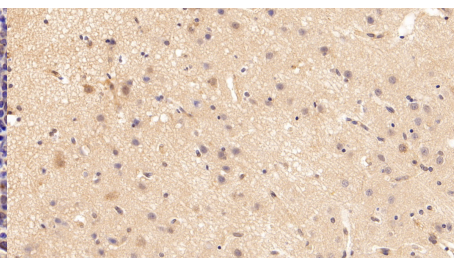
DAB staining on IHC-P;  
Sample: Rat Kidney Tissue;  
Primary Ab: 10?g/ml Rabbit Anti-  
Human GSN Antibody  
Second Ab: 2µg/mL HRP-Linked  
Caprine Anti-Rabbit IgG Polyclonal  
Antibody  
(Catalog: SAA544Rb19)



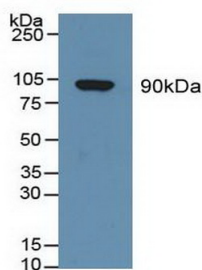
DAB staining on IHC-P;  
Sample: Rat Cardiac Muscle Tissue;  
Primary Ab: 10?g/ml Rabbit Anti-  
Human GSN Antibody  
Second Ab: 2µg/mL HRP-Linked  
Caprine Anti-Rabbit IgG Polyclonal  
Antibody  
(Catalog: SAA544Rb19)



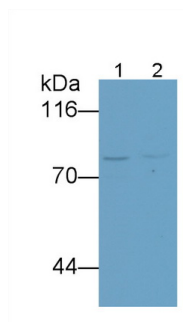
DAB staining on IHC-P;  
Sample: Porcine Spleen Tissue;  
Primary Ab: 10?g/ml Rabbit Anti-  
Human GSN Antibody  
Second Ab: 2µg/mL HRP-Linked  
Caprine Anti-Rabbit IgG Polyclonal  
Antibody  
(Catalog: SAA544Rb19)



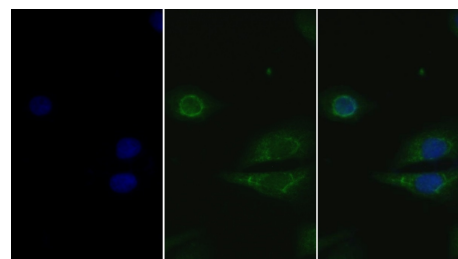
DAB staining on IHC-P;  
Sample: Porcine Cerebrum Tissue;  
Primary Ab: 10?g/ml Rabbit Anti-  
Human GSN Antibody  
Second Ab: 2µg/mL HRP-Linked  
Caprine Anti-Rabbit IgG Polyclonal  
Antibody  
(Catalog: SAA544Rb19)



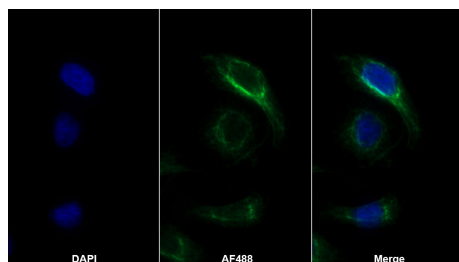
Western Blot; Sample: Human Serum  
 Primary Ab: 5µg/ml Rabbit Anti-Human GSN Antibody  
 Second Ab: 0.2µg/mL HRP-Linked Caprine Anti-Rabbit IgG Polyclonal Antibody  
 (Catalog: SAA544Rb19)



Western Blot; Sample: Lane1: A549 cell lysate; Lane2: MCF7 cell lysate  
 Primary Ab: 0.1µg/ml Rabbit Anti-Human GSN Antibody  
 Second Ab: 0.2µg/mL HRP-Linked Caprine Anti-Rabbit IgG Polyclonal Antibody  
 (Catalog: SAA544Rb19)



FITC staining on IF;  
 Sample: Human HeLa cell;  
 Primary Ab: 20ug/ml Rabbit Anti-Human GSN Antibody  
 Second Ab: 2µg/ml FITC-Linked Caprine Anti-Rabbit IgG Polyclonal Antibody  
 (Catalog: SAA544Rb18)



AF488 staining on IF;  
 Sample: HeLa cell  
 Primary Ab: 20µg/ml Rabbit Anti-Human GSN Antibody  
 Second Ab: 2µg/ml AF488-Linked Caprine Anti-Rabbit IgG Polyclonal Antibody  
 (Catalog: SAA544Rb11)

## [ **IMPORTANT NOTE** ]

The kit is designed for research use only, we will not be responsible for any issue if the kit was used in clinical diagnostic or any other procedures.