

**PAA623Mu01**

**Polyclonal Antibody to Glutathione S Transferase Omega 1 (GSTo1)**

**Organism Species: *Mus musculus* (Mouse)**

***Instruction manual***

**FOR RESEARCH USE ONLY**

**NOT FOR USE IN CLINICAL DIAGNOSTIC PROCEDURES**

---

13th Edition (Revised in Aug, 2023)

## **[ PROPERTIES ]**

**Source:** Polyclonal antibody preparation

**Host:** Rabbit

**Purification:** Antigen-specific affinity chromatography followed by Protein A affinity chromatography

**Traits:** Liquid

**Concentration:** 0.5mg/mL

**UOM:** 100µL

**Cross Reactivity:** N/A

**Applications:** WB; IHC; ICC; IP.

## **[ IMMUNOGEN ]**

**Immunogen:** Recombinant GSTo1 (Ile24~Pro233 (Accession # O09131)) expressed in *E.coli*

**Accession No.:** RPA623Mu01

## **[ APPLICATIONS ]**

Western blotting: 0.01-2µg/mL

Immunohistochemistry: 5-20µg/mL

Immunocytochemistry: 5-20µg/mL

Optimal working dilutions must be determined by end user.

## **[ FORMULATION ]**

**Form & Buffer:** Supplied as solution form in 0.01M PBS, pH7.4, containing 0.05% Proclin-300, 50% glycerol.

## **[ STORAGE AND STABILITY ]**

**Storage:** Avoid repeated freeze/thaw cycles.

Store at 4°C for frequent use.

Aliquot and store at -20°C for 24 months.

**Stability Test:** The thermal stability is described by the loss rate. The loss rate was determined by accelerated thermal degradation test, that is, incubate the protein at 37°C for 48h, and no

obvious degradation and precipitation were observed. The loss rate is less than 5% within the expiration date under appropriate storage condition.

## [ IDENTIFICATION ]

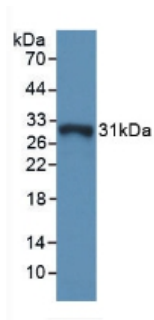
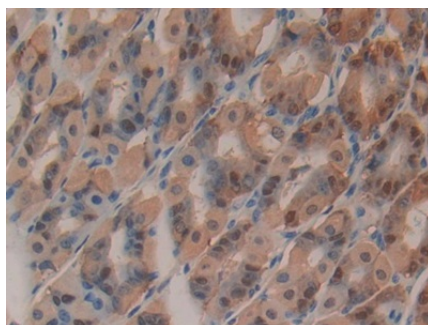
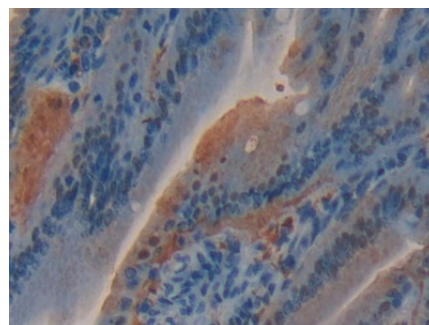


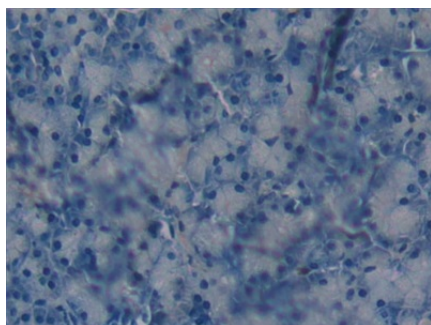
Figure. Western Blot; .Sample:  
Recombinant GSTo1, Mouse.



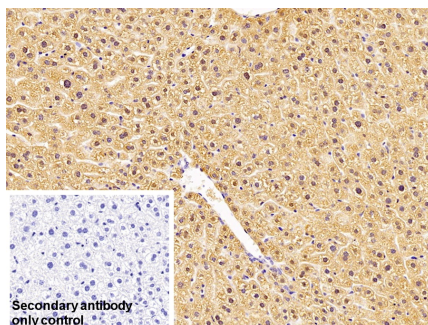
DAB staining on IHC-P; Samples:  
Mouse Stomach Tissue; Primary Ab:  
10µg/ml Rabbit Anti-Mouse GSTo1  
Antibody Second Ab: 2µg/mL HRP-  
Linked Caprine Anti-Rabbit IgG  
Polyclonal Antibody (Catalog:  
SAA544Rb19)



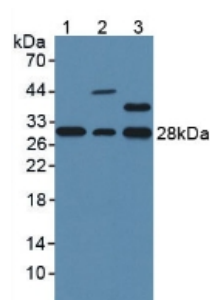
DAB staining on IHC-P;  
Samples: Mouse Small intestine  
Tissue;  
Primary Ab: 10µg/ml Rabbit Anti-Mouse  
GSTo1 Antibody  
Second Ab: 2µg/mL HRP-Linked  
Caprine Anti-Rabbit IgG Polyclonal  
Antibody  
(Catalog: SAA544Rb19)



DAB staining on IHC-P;  
Samples: Mouse Pancreas Tissue;  
Primary Ab: 10µg/ml Rabbit Anti-Mouse  
GSTo1 Antibody  
Second Ab: 2µg/mL HRP-Linked  
Caprine Anti-Rabbit IgG Polyclonal  
Antibody  
(Catalog: SAA544Rb19)



DAB staining on IHC-P;  
Sample: Mouse Liver Tissue  
Primary Ab: 10µg/ml Rabbit Anti-Mouse  
GSTo1 Antibody  
Control: Used PBS instead of primary  
antibody  
Second Ab: 2?g/ml HRP-Linked  
Caprine Anti-Rabbit IgG Polyclonal



Western Blot; Samples: Lane1: Mouse  
Liver lysate; Lane2: Mouse Heart  
lysate; Lane3: Mouse Lung lysate;  
Primary Ab: 1µg/ml Rabbit Anti-Mouse  
GSTo1 Antibody  
Second Ab: 0.2?g/ml HRP-Linked  
Caprine Anti-Rabbit IgG Polyclonal  
Antibody

Antibody  
(Catalog: SAA544Rb19)

(Catalog: SAA544Rb19)

**[ IMPORTANT NOTE ]**

The kit is designed for research use only, we will not be responsible for any issue if the kit was used in clinical diagnostic or any other procedures.