

**PAB704Mu01**

**Polyclonal Antibody to Glycophorin A (GYPA)**

**Organism Species: *Mus musculus* (Mouse)**

***Instruction manual***

FOR RESEARCH USE ONLY

NOT FOR USE IN CLINICAL DIAGNOSTIC PROCEDURES

---

13th Edition (Revised in Aug, 2023)

## **[ PROPERTIES ]**

**Source:** Polyclonal antibody preparation

**Host:** Rabbit

**Purification:** Antigen-specific affinity chromatography followed by Protein A affinity chromatography

**Traits:** Liquid

**Concentration:** 0.5mg/mL

**UOM:** 200µL

**Cross Reactivity:** N/A

**Applications:** WB; IHC

## **[ IMMUNOGEN ]**

**Immunogen:** Recombinant GYPA (Met1~Val108) expressed in *E.coli*

**Accession No.:** RPB704Mu01

## **[ APPLICATIONS ]**

Western blotting: 0.01-2µg/mL;

Immunohistochemistry: 5-20µg/mL;

Optimal working dilutions must be determined by end user.

## **[ FORMULATION ]**

**Form & Buffer:** Supplied as solution form in 0.01M PBS, pH7.4, containing 0.05% Proclin-300, 50% glycerol.

## **[ STORAGE AND STABILITY ]**

**Storage:** Avoid repeated freeze/thaw cycles.

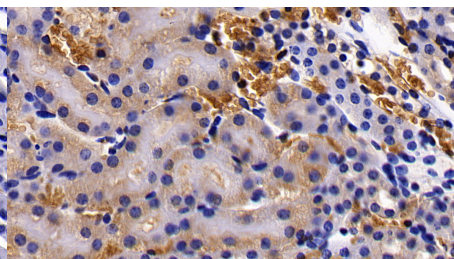
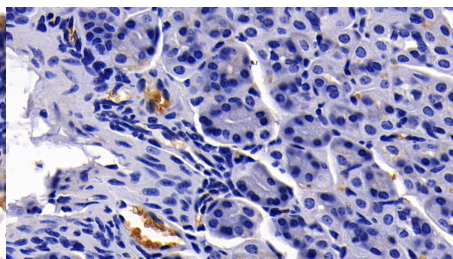
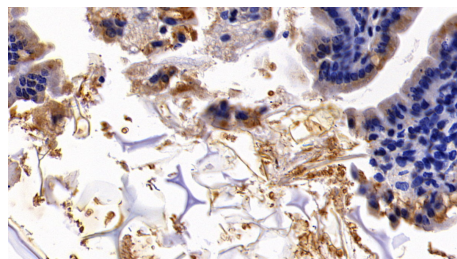
Store at 4°C for frequent use.

Aliquot and store at -20°C for 24 months.

**Stability Test:** The thermal stability is described by the loss rate. The loss rate was determined by accelerated thermal degradation test, that is, incubate the protein at 37°C for 48h, and no obvious degradation and precipitation were observed. The loss rate is less than 5% within the

expiration date under appropriate storage condition.

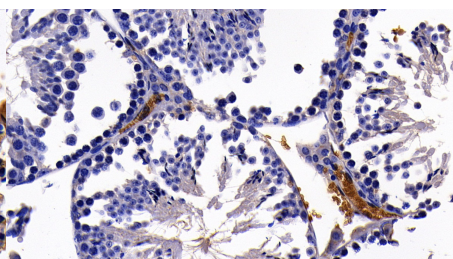
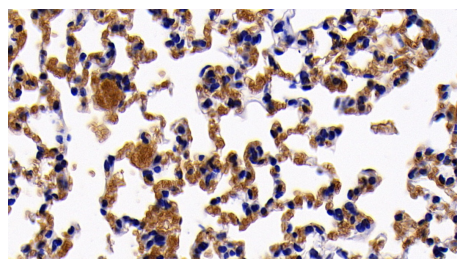
## [ IDENTIFICATION ]



DAB staining on IHC-P; Samples:  
Mouse Small intestine Tissue; Primary  
Ab: 20?g/ml Rabbit Anti-Mouse GYPA  
Antibody Second Ab: 2µg/mL HRP-  
Linked Caprine Anti-Rabbit IgG  
Polyclonal Antibody (Catalog:  
SAA544Rb19)

DAB staining on IHC-P;  
Samples: Mouse Stomach Tissue;  
Primary Ab: 20?g/ml Rabbit Anti-Mouse  
GYPA Antibody  
Second Ab: 2µg/mL HRP-Linked  
Caprine Anti-Rabbit IgG Polyclonal  
Antibody  
(Catalog: SAA544Rb19)

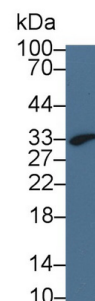
DAB staining on IHC-P;  
Samples: Mouse Kidney Tissue;  
Primary Ab: 20?g/ml Rabbit Anti-Mouse  
GYPA Antibody  
Second Ab: 2µg/mL HRP-Linked  
Caprine Anti-Rabbit IgG Polyclonal  
Antibody  
(Catalog: SAA544Rb19)



DAB staining on IHC-P;  
Samples: Mouse Lung Tissue;  
Primary Ab: 20?g/ml Rabbit Anti-Mouse  
GYPA Antibody  
Second Ab: 2µg/mL HRP-Linked  
Caprine Anti-Rabbit IgG Polyclonal  
Antibody  
(Catalog: SAA544Rb19)

DAB staining on IHC-P;  
Samples: Mouse Testis Tissue;  
Primary Ab: 20?g/ml Rabbit Anti-Mouse  
GYPA Antibody  
Second Ab: 2µg/mL HRP-Linked  
Caprine Anti-Rabbit IgG Polyclonal  
Antibody  
(Catalog: SAA544Rb19)

Western Blot; Sample: Mouse Placenta  
lysate  
Primary Ab: 1µg/ml Rabbit Anti-Mouse  
GYPA Antibody  
Second Ab: 0.2µg/mL HRP-Linked  
Caprine Anti-Rabbit IgG Polyclonal  
Antibody  
(Catalog: SAA544Rb19)



## [ IMPORTANT NOTE ]

The kit is designed for research use only, we will not be responsible for any issue if the kit was used in clinical diagnostic or any other procedures.