

PAA301Bo01

Polyclonal Antibody to Heat Shock 70kDa Protein 1B (HSPA1B)

Organism Species: *Bos taurus*; Bovine (Cattle)

Instruction manual

FOR RESEARCH USE ONLY

NOT FOR USE IN CLINICAL DIAGNOSTIC PROCEDURES

13th Edition (Revised in Aug, 2023)

[**PROPERTIES**]

Source: Polyclonal antibody preparation

Host: Rabbit

Purification: Antigen-specific affinity chromatography followed by Protein A affinity chromatography

Traits: Liquid

Concentration: 0.5mg/ml

UOM: 100µl

Cross Reactivity: Human;Mouse;Rat

Applications: WB; IHC; ICC; IP.

[**IMMUNOGEN**]

Immunogen: Recombinant HSPA1B (Met1~Asp641) expressed in *E.coli*

Accession No.: RPA301Bo01

[**APPLICATIONS**]

Western blotting: 0.01-2µg/mL;

Immunohistochemistry: 5-20µg/mL;

Immunofluorescence:5-20µg/mL;

Optimal working dilutions must be determined by end user.

[**FORMULATION**]

Form & Buffer: Supplied as solution form in PBS, pH7.4, containing 0.02% NaN₃, 50% glycerol.

[**STORAGE AND STABILITY**]

Storage: Avoid repeated freeze/thaw cycles.

Store at 4°C for frequent use.

Aliquot and store at -20°C for 24 months.

Stability Test: The thermal stability is described by the loss rate. The loss rate was determined by accelerated thermal degradation test, that is, incubate the protein at 37°C for 48h, and no

obvious degradation and precipitation were observed. The loss rate is less than 5% within the expiration date under appropriate storage condition.

[IDENTIFICATION]

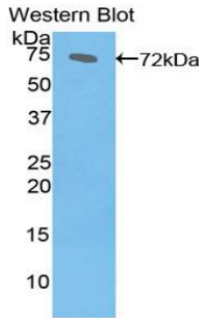
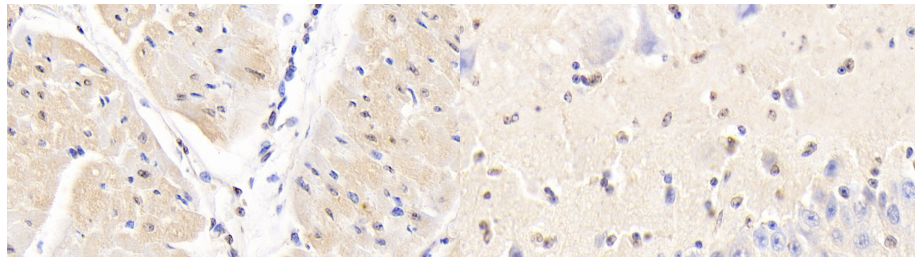
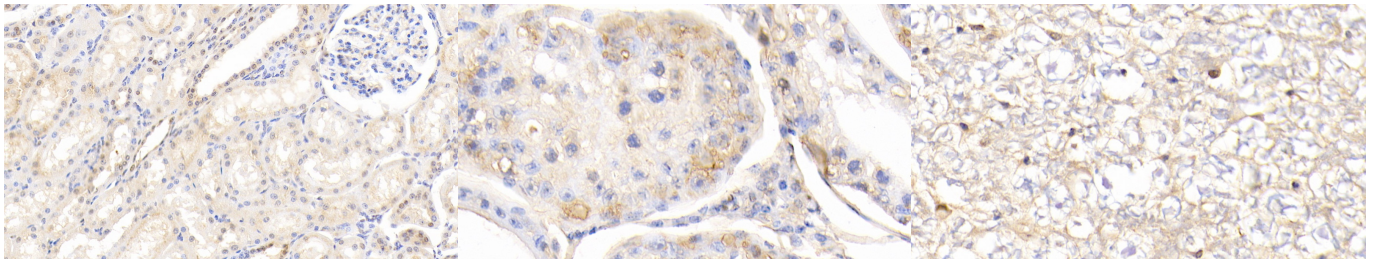


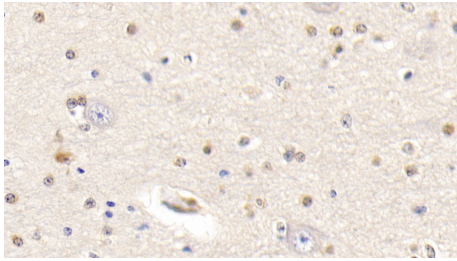
Figure. Western Blot; Sample: Recombinant HSPA1B, Bovine.



DAB staining on IHC-P; Samples: Bovine Cardiac Muscle Tissue; Primary Ab: 20?g/ml Rabbit Anti-Bovine HSPA1B Antibody Second Ab: 2µg/mL HRP-Linked Caprine Anti-Rabbit IgG Polyclonal Antibody (Catalog: SAA544Rb19)	DAB staining on IHC-P; Samples: Bovine Cerebellum Tissue; Primary Ab: 20?g/ml Rabbit Anti-Bovine HSPA1B Antibody Second Ab: 2µg/mL HRP-Linked Caprine Anti-Rabbit IgG Polyclonal Antibody (Catalog: SAA544Rb19)
---	---

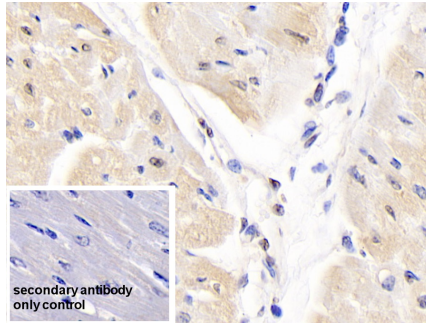


DAB staining on IHC-P; Samples: Bovine Kidney Tissue; Primary Ab: 20?g/ml Rabbit Anti-Bovine HSPA1B Antibody Second Ab: 2µg/mL HRP-Linked Caprine Anti-Rabbit IgG Polyclonal Antibody (Catalog: SAA544Rb19)	DAB staining on IHC-P; Samples: Bovine Testis Tissue; Primary Ab: 20?g/ml Rabbit Anti-Bovine HSPA1B Antibody Second Ab: 2µg/mL HRP-Linked Caprine Anti-Rabbit IgG Polyclonal Antibody (Catalog: SAA544Rb19)	DAB staining on IHC-P; Samples: Bovine Spinal cord Tissue; Primary Ab: 20?g/ml Rabbit Anti-Bovine HSPA1B Antibody Second Ab: 2µg/mL HRP-Linked Caprine Anti-Rabbit IgG Polyclonal Antibody (Catalog: SAA544Rb19)
---	---	--



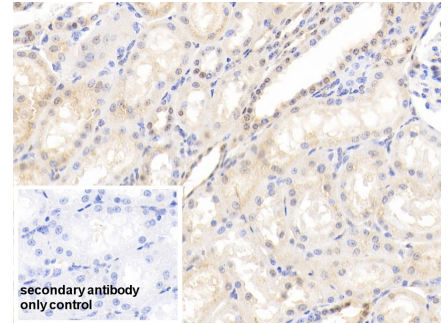
DAB staining on IHC-P;

Samples: Bovine Cerebrum Tissue;
 Primary Ab: 20 μ g/ml Rabbit Anti-Bovine
 HSPA1B Antibody
 Second Ab: 2 μ g/mL HRP-Linked
 Caprine Anti-Rabbit IgG Polyclonal
 Antibody
 (Catalog: SAA544Rb19)



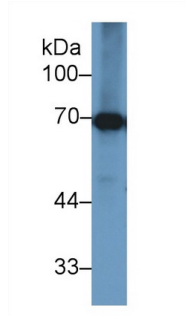
DAB staining on IHC-P;

Sample: Bovine Cardiac Muscle Tissue
 Primary Ab: 20 μ g/ml Rabbit Anti-Bovine
 HSPA1B Antibody
 Control: Used PBS instead of primary
 antibody
 Second Ab: 2 μ g/ml HRP-Linked
 Caprine Anti-Rabbit IgG Polyclonal
 Antibody
 (Catalog: SAA544Rb19)



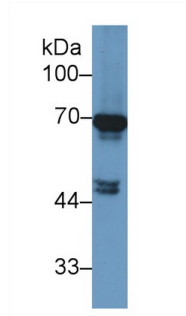
DAB staining on IHC-P;

Sample: Bovine Kidney Tissue
 Primary Ab: 20 μ g/ml Rabbit Anti-Bovine
 HSPA1B Antibody
 Control: Used PBS instead of primary
 antibody
 Second Ab: 2 μ g/ml HRP-Linked
 Caprine Anti-Rabbit IgG Polyclonal
 Antibody
 (Catalog: SAA544Rb19)



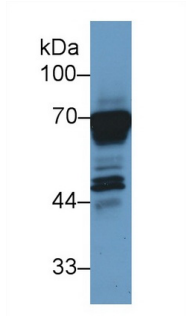
Western Blot; Sample: Bovine Liver
 lysate;

Primary Ab: 1 μ g/ml Rabbit Anti-Bovine
 HSPA1B Antibody
 Second Ab: 0.2 μ g/mL HRP-Linked
 Caprine Anti-Rabbit IgG Polyclonal
 Antibody
 (Catalog: SAA544Rb19)



Western Blot; Sample: Bovine
 Cerebrum lysate;

Primary Ab: 1 μ g/ml Rabbit Anti-Bovine
 HSPA1B Antibody
 Second Ab: 0.2 μ g/mL HRP-Linked
 Caprine Anti-Rabbit IgG Polyclonal
 Antibody
 (Catalog: SAA544Rb19)



Western Blot; Sample: Bovine Kidney
 lysate;

Primary Ab: 1 μ g/ml Rabbit Anti-Bovine
 HSPA1B Antibody
 Second Ab: 0.2 μ g/mL HRP-Linked
 Caprine Anti-Rabbit IgG Polyclonal
 Antibody
 (Catalog: SAA544Rb19)

[IMPORTANT NOTE]

The kit is designed for research use only, we will not be responsible for any issue if the kit was used in clinical diagnostic or any other procedures.