

**PAA693Hu01**

**Polyclonal Antibody to Heat Shock Protein 27 (Hsp27)**

**Organism Species: *Homo sapiens (Human)***

***Instruction manual***

FOR RESEARCH USE ONLY

NOT FOR USE IN CLINICAL DIAGNOSTIC PROCEDURES

---

13th Edition (Revised in Aug, 2023)

**[ PROPERTIES ]**

**Source:** Polyclonal antibody preparation

**Host:** Rabbit

**Purification:** Antigen-specific affinity chromatography followed by Protein A affinity chromatography

**Traits:** Liquid

**Concentration:** 0.5mg/ml

**UOM:** 100µl

**Cross Reactivity:** Porcine.

**Applications:** WB,IHC,ICC/IF

**[ IMMUNOGEN ]**

**Immunogen:** Recombinant Hsp27 (Thr2~Lys205) expressed in *E.coli*

**Accession No.:** RPA693Hu01

**[ APPLICATIONS ]**

Western blotting: 0.01-3µg/mL;

Immunohistochemistry: 5-20µg/mL;

Immunofluorescence:5-30µg/mL;

Optimal working dilutions must be determined by end user.

**[ FORMULATION ]**

**Form & Buffer:** Supplied as solution form in 0.01M PBS, pH7.4, containing 0.05% Proclin-300, 50% glycerol.

**[ STORAGE AND STABILITY ]**

**Storage:** Avoid repeated freeze/thaw cycles.

Store at 4°C for frequent use.

Aliquot and store at -20°C for 24 months.

**Stability Test:** The thermal stability is described by the loss rate. The loss rate was determined by accelerated thermal degradation test, that is, incubate the protein at 37°C for 48h, and no

obvious degradation and precipitation were observed. The loss rate is less than 5% within the expiration date under appropriate storage condition.

**[ IDENTIFICATION ]**

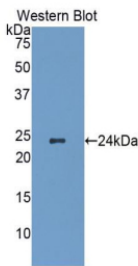
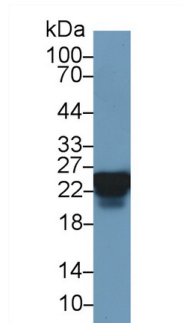
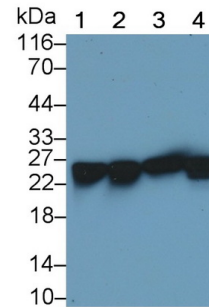


Figure. Western Blot; Sample: Recombinant Hsp27, Human.



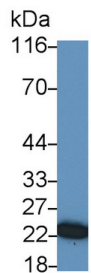
Western Blot; Sample: Human Lung lysate;  
 Primary Ab: 3µg/ml Rabbit Anti-Human Hsp27 Antibody  
 Second Ab: 0.2µg/mL HRP-Linked Caprine Anti-Rabbit IgG Polyclonal Antibody  
 (Catalog: SAA544Rb19)



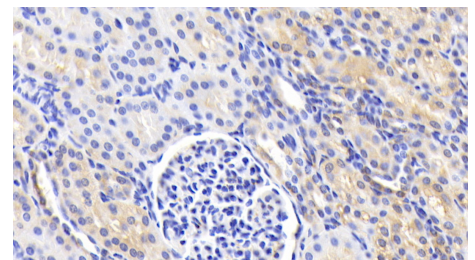
Western Blot; Sample: Lane1: Porcine Heart lysate; Lane2: Porcine Skeletal muscle lysate; Lane3: A549 cell lysate; Lane4: HepG2 cell lysate  
 Primary Ab: 0.1µg/ml Rabbit Anti-Human Hsp27 Antibody  
 Second Ab: 0.2µg/mL HRP-Linked Caprine Anti-Rabbit IgG Polyclonal Antibody  
 (Catalog: SAA544Rb19)



Western Blot; Sample: Porcine Heart lysate;  
 Primary Ab: 3µg/ml Rabbit Anti-Human Hsp27 Antibody  
 Second Ab: 0.2µg/mL HRP-Linked Caprine Anti-Rabbit IgG Polyclonal Antibody

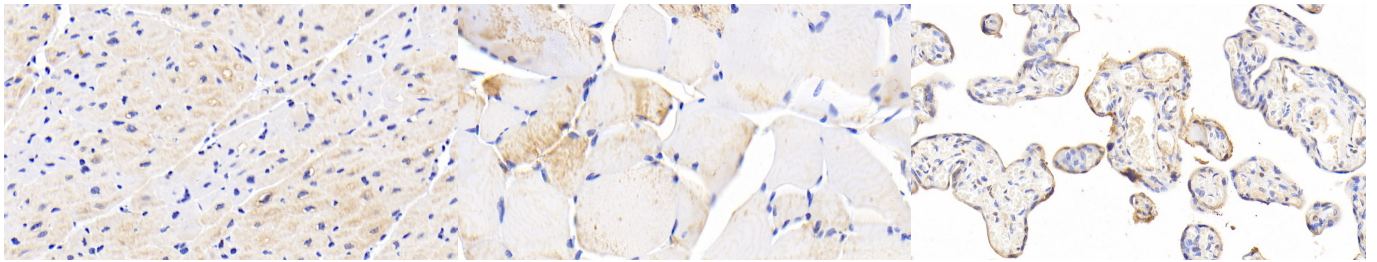


Western Blot; Sample: Hela cell lysate  
 Primary Ab: 0.1µg/ml Rabbit Anti-Human Hsp27 Antibody  
 Second Ab: 0.2µg/mL HRP-Linked Caprine Anti-Rabbit IgG Polyclonal Antibody  
 (Catalog: SAA544Rb19)



DAB staining on IHC-P;  
 Samples: Human Kidney Tissue;  
 Primary Ab: 20µg/ml Rabbit Anti-Human HSPB27 Antibody  
 Second Ab: 2µg/mL HRP-Linked Caprine Anti-Rabbit IgG Polyclonal Antibody  
 (Catalog: SAA544Rb19)

(Catalog: SAA544Rb19)



DAB staining on IHC-P;

Samples: Human Cardiac Muscle  
Tissue;

Primary Ab: 20 $\mu$ g/ml Rabbit Anti-  
Human Hsp27 Antibody

Second Ab: 2 $\mu$ g/mL HRP-Linked  
Caprine Anti-Rabbit IgG Polyclonal  
Antibody

(Catalog: SAA544Rb19)

DAB staining on IHC-P;

Samples: Human Skeletal muscle  
Tissue;

Primary Ab: 20 $\mu$ g/ml Rabbit Anti-  
Human Hsp27 Antibody

Second Ab: 2 $\mu$ g/mL HRP-Linked  
Caprine Anti-Rabbit IgG Polyclonal  
Antibody

(Catalog: SAA544Rb19)

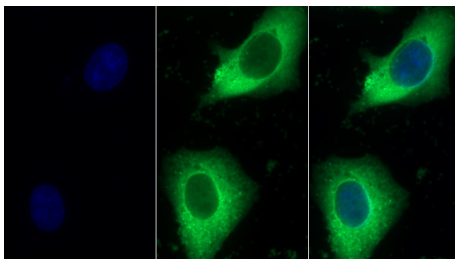
DAB staining on IHC-P;

Samples: Human Placenta Tissue;

Primary Ab: 20 $\mu$ g/ml Rabbit Anti-  
Human Hsp27 Antibody

Second Ab: 2 $\mu$ g/mL HRP-Linked  
Caprine Anti-Rabbit IgG Polyclonal  
Antibody

(Catalog: SAA544Rb19)



FITC staining on IF;

Sample: Human HeLa cell;

Primary Ab: 30 $\mu$ g/ml Rabbit Anti-  
Human Hsp27 Antibody

Second Ab: 2 $\mu$ g/ml FITC-Linked  
Caprine Anti-Rabbit IgG Polyclonal  
Antibody

(Catalog: SAA544Rb18)

## [ **IMPORTANT NOTE** ]

The kit is designed for research use only, we will not be responsible for any issue if the kit was used in clinical diagnostic or any other procedures.