

PAA399Mu01

Polyclonal Antibody to High Mobility Group Protein 1 (HMGB1)

Organism Species: *Mus musculus* (Mouse)

Instruction manual

FOR RESEARCH USE ONLY

NOT FOR USE IN CLINICAL DIAGNOSTIC PROCEDURES

13th Edition (Revised in Aug, 2023)

[PROPERTIES]

Source: Polyclonal antibody preparation

Host: Rabbit

Purification: Antigen-specific affinity chromatography followed by Protein A affinity chromatography

Traits: Liquid

Concentration: 0.5mg/ml

UOM: 100µl

Cross Reactivity: Human.

Applications: WB,IHC,ICC/IF

[IMMUNOGEN]

Immunogen: Recombinant HMGB1 (Met1~Glu215) expressed in *E.coli*

Accession No.: RPA399Mu01

[APPLICATIONS]

Western blotting: 0.01-2µg/mL;

Immunohistochemistry: 5-20µg/mL;

Immunofluorescence:5-20µg/mL;

Optimal working dilutions must be determined by end user.

[FORMULATION]

Form & Buffer: Supplied as solution form in 0.01M PBS, pH7.4, containing 0.05% Proclin-300, 50% glycerol.

[STORAGE AND STABILITY]

Storage: Avoid repeated freeze/thaw cycles.

Store at 4°C for frequent use.

Aliquot and store at -20°C for 24 months.

Stability Test: The thermal stability is described by the loss rate. The loss rate was determined by accelerated thermal degradation test, that is, incubate the protein at 37°C for 48h, and no

obvious degradation and precipitation were observed. The loss rate is less than 5% within the expiration date under appropriate storage condition.

[IDENTIFICATION]

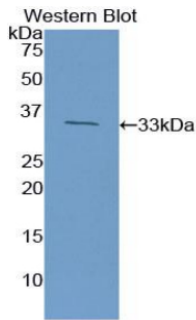
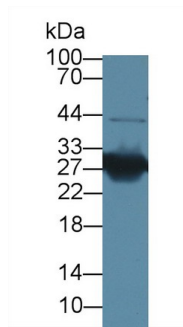
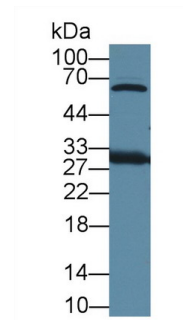


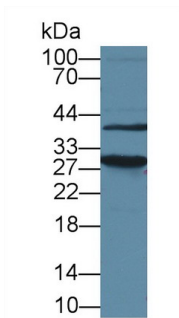
Figure. Western Blot; Sample: Recombinant HMG1, Mouse.



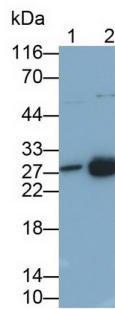
Western Blot; Sample: Mouse Kidney lysate;
Primary Ab: 1µg/ml Rabbit Anti-Mouse HMG1 Antibody
Second Ab: 0.2µg/mL HRP-Linked Caprine Anti-Rabbit IgG Polyclonal Antibody
(Catalog: SAA544Rb19)



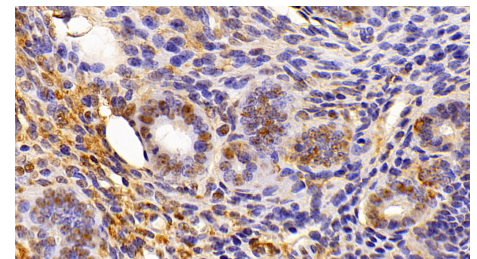
Western Blot; Sample: Mouse Cerebrum lysate;
Primary Ab: 1µg/ml Rabbit Anti-Mouse HMG1 Antibody
Second Ab: 0.2µg/mL HRP-Linked Caprine Anti-Rabbit IgG Polyclonal Antibody
(Catalog: SAA544Rb19)



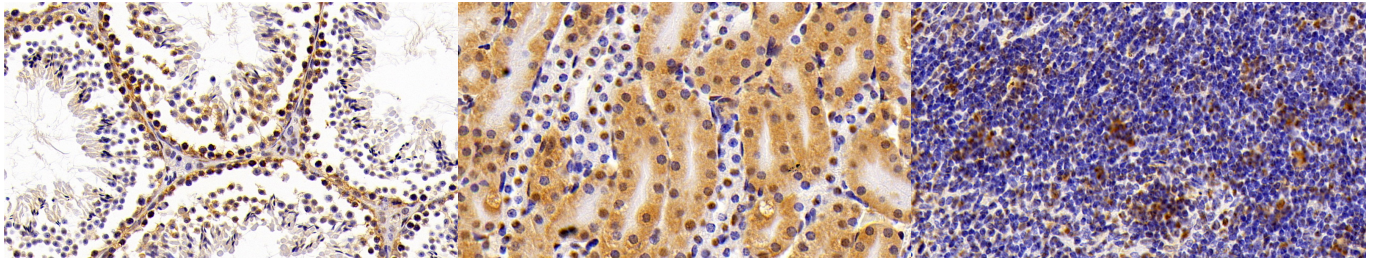
Western Blot; Sample: Human HepG2 cell lysate;
Primary Ab: 1µg/ml Rabbit Anti-Mouse HMG1 Antibody
Second Ab: 0.2µg/mL HRP-Linked Caprine Anti-Rabbit IgG Polyclonal Antibody
(Catalog: SAA544Rb19)



Western Blot; Sample: Lane1: Hela cell lysate; Lane2: Jurkat cell lysate
Primary Ab: 0.5µg/ml Rabbit Anti-Mouse HMGB1 Antibody
Second Ab: 0.2µg/mL HRP-Linked Caprine Anti-Rabbit IgG Polyclonal Antibody
(Catalog: SAA544Rb19)



DAB staining on IHC-P;
Samples: Mouse Uterus Tissue;
Primary Ab: 10µg/ml Rabbit Anti-Mouse HMG1 Antibody
Second Ab: 2µg/mL HRP-Linked Caprine Anti-Rabbit IgG Polyclonal Antibody
(Catalog: SAA544Rb19)



DAB staining on IHC-P;

Samples: Mouse Testis Tissue;

Primary Ab: 10?g/ml Rabbit Anti-Mouse

HMG1 Antibody

Second Ab: 2µg/mL HRP-Linked

Caprine Anti-Rabbit IgG Polyclonal
Antibody

(Catalog: SAA544Rb19)

DAB staining on IHC-P;

Samples: Mouse Kidney Tissue;

Primary Ab: 10?g/ml Rabbit Anti-Mouse

HMG1 Antibody

Second Ab: 2µg/mL HRP-Linked

Caprine Anti-Rabbit IgG Polyclonal
Antibody

(Catalog: SAA544Rb19)

DAB staining on IHC-P;

Samples: Mouse Spleen Tissue;

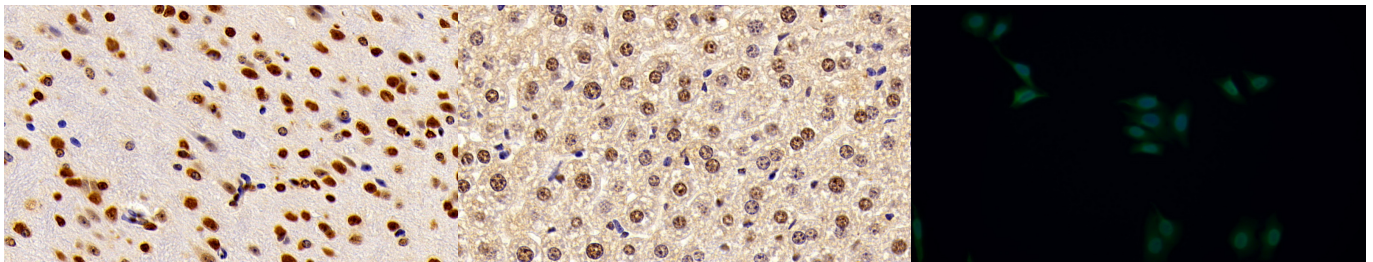
Primary Ab: 10?g/ml Rabbit Anti-Mouse

HMG1 Antibody

Second Ab: 2µg/mL HRP-Linked

Caprine Anti-Rabbit IgG Polyclonal
Antibody

(Catalog: SAA544Rb19)



DAB staining on IHC-P;

Samples: Mouse Cerebrum Tissue;

Primary Ab: 10?g/ml Rabbit Anti-Mouse

HMG1 Antibody

Second Ab: 2µg/mL HRP-Linked

Caprine Anti-Rabbit IgG Polyclonal
Antibody

(Catalog: SAA544Rb19)

DAB staining on IHC-P;

Samples: Mouse Liver Tissue;

Primary Ab: 10?g/ml Rabbit Anti-Mouse

HMG1 Antibody

Second Ab: 2µg/mL HRP-Linked

Caprine Anti-Rabbit IgG Polyclonal
Antibody

(Catalog: SAA544Rb19)

FITC staining on IF;

Samples: Human HepG2 cell;

Primary Ab: 20?g/ml Rabbit Anti-Mouse

HMG1 Antibody

Second Ab: 1.5?g/ml FITC-Linked

Caprine Anti-Rabbit IgG Polyclonal
Antibody

(Catalog: SAA544Rb18)

[IMPORTANT NOTE]

The kit is designed for research use only, we will not be responsible for any issue if the kit was used in clinical diagnostic or any other procedures.