

PAB377Mu01**Polyclonal Antibody to Immune Receptor Expressed On Myeloid Cells 1 (IREM1)****Organism Species: Mus musculus (Mouse)*****Instruction manual***

FOR IN VITRO USE AND RESEARCH USE ONLY

NOT FOR USE IN CLINICAL DIAGNOSTIC PROCEDURES

9th Edition (Revised in Jul, 2013)

[PRODUCT INFORMATION]**Immunogen:** IREM1, Mouse**Clonality:** Polyclonal**Host:** Rabbit**Immunoglobulin Type:** IgG**Purification:** Affinity Chromatography.**Applications:** WB, ICC, IHC-P, IHC-F, ELISA**Concentration:** 200µg/mL**UOM:** 100µg**[IMMUNOGEN INFORMATION]****Immunogen:** Recombinant IREM1 (Ser45~Ile310) expressed in *E.coli*.**Accession No.:** RPB377Mu01**Sequence:** The target protein is fused with two N-terminal Tags, His-tag and GST-tag and its sequence is listed below.

MSPILGYWKI KGLVQPTRL LLEYLEEKYEE HLYERDEGDK WRNKKFELGL EFPNLPYYID
GDVKLTQSMA IIRYIADKHN MLGGCPKERA EISMLEGAVL DIRYGVSR IA YSKDFETLKV
DFLSKLP EML KMFEDRLCHK TYLNGDHVTH PDFMLYDALD VVLYMDPMCL DAFPKLVCFK
KRIEAIQID KYLKSSKYIA WPLQG WQATF GGGDHPPKSD GSTSGSGHHH HHHSAGLVPR
GSTAIGMKET AAKAFERQHM DSPDLGTGGG SGIEGRGSMG YRGSEF-SGWKDY
KKYWCQGV PQ RSKCTLVETD ASEQLVKKNR VSIRDNQ RDF IFTVTMEDLR MSDAGIYWCG
ITKGGLDPMF KVTVNIGPAI QVPITVPTMP PITSTTTIFT VTTTVKETSM FPTLTSSYSD
NGHGGGDSGG GEDGVGDGFL DLSVLLPVIS AVLLLLLLVA SLFAWRMVRR QKKAAGPPSE
QAQSLEGDLC YADLSLKQPR TSPGSSWKKG SSMSSSGKDH QEEVEYVTMA
PFPREEVSYAAL TLAGLGQE PTYGNTGCPI

[ANTIBODY SPECIFICITY]

The antibody is a rabbit polyclonal antibody raised against IREM1. It has been selected for its ability to recognize IREM1 in immunohistochemical staining and western blotting.

[APPLICATIONS]

Western blotting: 1:100-400

Immunocytochemistry in formalin fixed cells: 1:100-500

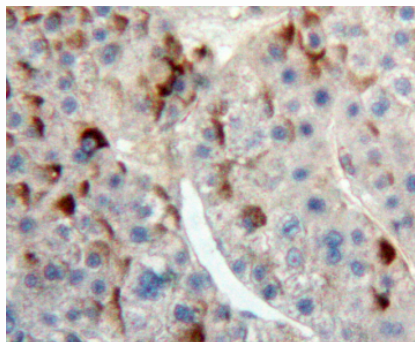
Immunohistochemistry in formalin fixed frozen section: 1:100-500

Immunohistochemistry in paraffin section: 1:50-200

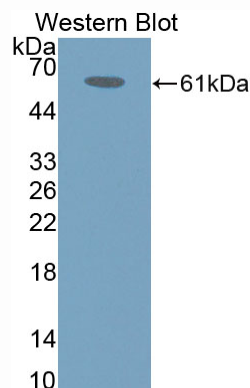
Enzyme-linked Immunosorbent Assay: 1:100-200

Optimal working dilutions must be determined by end user.

[IMAGES]



Used in DAB staining on formalin fixed
paraffin-embedded Liver tissue



Used in Western Blot, Sample:
Recombinant IREM1, Mouse

[CONTENTS]

Form & Buffer: Supplied as solution form in PBS, pH7.4, containing 0.02% NaN₃, 50% glycerol.

[QUALITY CONTROL]

Content: The quality control contains recombinant IREM1 (Ser45~Ile310) disposed in loading buffer.

Usage: 10uL per well when 3,3'-Diaminobenzidine(DAB) as the substrate.
5uL per well when used in enhanced chemiluminescent (ECL).

Note: The quality control is specifically manufactured as the positive control. Not used for other purposes.

Loading Buffer: 100mM Tris(pH8.8), 2% SDS, 200mM NaCl, 50% glycerol, BPB 0.01%, NaN₃ 0.02%.

[STORAGE]

Store at 4°C for frequent use. Stored at -20°C to -80°C in a manual defrost freezer for one year without detectable loss of activity. Avoid repeated freeze-thaw cycles.