

**PAA544Hu01**

**Polyclonal Antibody to Immunoglobulin G (IgG)**

**Organism Species: *Homo sapiens (Human)***

***Instruction manual***

**FOR RESEARCH USE ONLY**

**NOT FOR USE IN CLINICAL DIAGNOSTIC PROCEDURES**

---

13th Edition (Revised in Aug, 2023)

## **[ PROPERTIES ]**

**Source:** Polyclonal antibody preparation

**Host:** Rabbit

**Purification:** Antigen-specific affinity chromatography followed by Protein A affinity chromatography

**Traits:** Liquid

**Concentration:** 0.5mg/mL

**UOM:** 100µL

**Cross Reactivity:** N/A

**Applications:** WB; IHC; ICC; IP.

## **[ IMMUNOGEN ]**

**Immunogen:** Recombinant IgG ( ) expressed in *Human (Serum)*

**Accession No.:** NPA544Hu01

## **[ APPLICATIONS ]**

Western blotting: 0.01-2µg/mL;

Immunohistochemistry: 5-20µg/mL;

Immunocytochemistry: 5-20µg/mL;

Optimal working dilutions must be determined by end user.

## **[ FORMULATION ]**

**Form & Buffer:** Supplied as solution form in 0.01M PBS, pH7.4, containing 0.05% Proclin-300, 50% glycerol.

## **[ STORAGE AND STABILITY ]**

**Storage:** Avoid repeated freeze/thaw cycles.

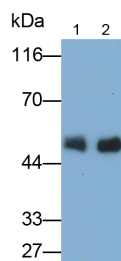
Store at 4°C for frequent use.

Aliquot and store at -20°C for 24 months.

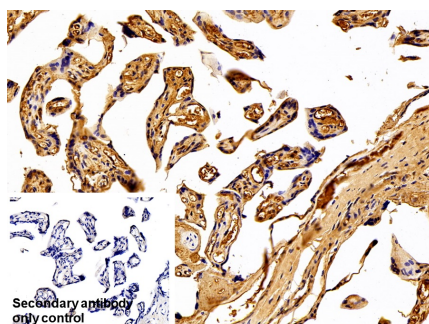
**Stability Test:** The thermal stability is described by the loss rate. The loss rate was determined by accelerated thermal degradation test, that is, incubate the protein at 37°C for 48h, and no

obvious degradation and precipitation were observed. The loss rate is less than 5% within the expiration date under appropriate storage condition.

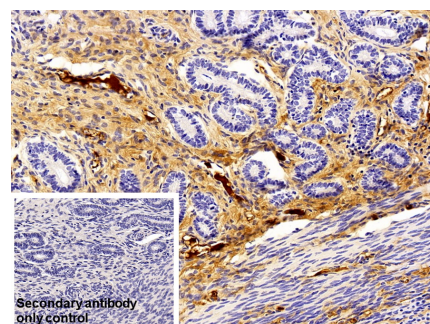
## [ IDENTIFICATION ]



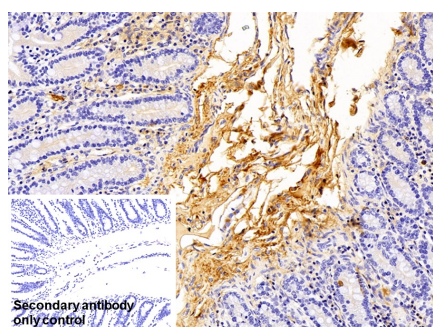
Western Blot; Samples: Lane1: Human Serum; Lane2: Human Plasma; Primary Ab: 0.01μg/ml Rabbit Anti-Human IgG Antibody Second Ab: 0.2?g/ml HRP-Linked Caprine Anti-Rabbit IgG Polyclonal Antibody (Catalog: SAA544Rb19)



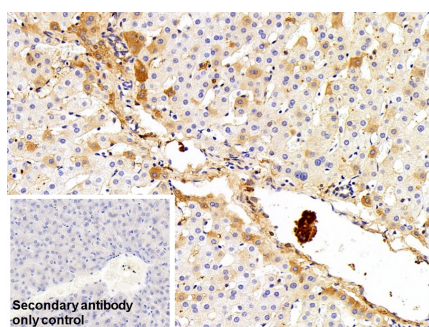
DAB staining on IHC-P; Sample: Human Placenta Tissue Primary Ab: 10μg/ml Rabbit Anti-Human IgG Antibody Control: Used PBS instead of primary antibody Second Ab: 2?g/ml HRP-Linked Caprine Anti-Rabbit IgG Polyclonal Antibody (Catalog: SAA544Rb19)



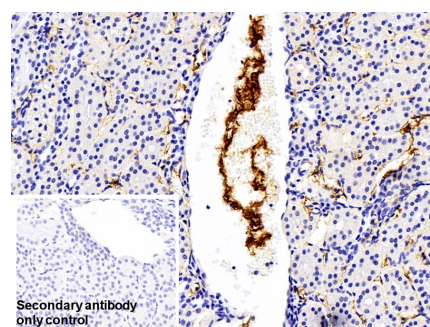
DAB staining on IHC-P; Sample: Porcine Uterus Tissue Primary Ab: 10μg/ml Rabbit Anti-Human IgG Antibody Control: Used PBS instead of primary antibody Second Ab: 2?g/ml HRP-Linked Caprine Anti-Rabbit IgG Polyclonal Antibody (Catalog: SAA544Rb19)



DAB staining on IHC-P; Sample: Porcine Small intestine Tissue Primary Ab: 10μg/ml Rabbit Anti-Human IgG Antibody Control: Used PBS instead of primary antibody Second Ab: 2?g/ml HRP-Linked



DAB staining on IHC-P; Sample: Porcine Liver Tissue Primary Ab: 10μg/ml Rabbit Anti-Human IgG Antibody Control: Used PBS instead of primary antibody Second Ab: 2?g/ml HRP-Linked



DAB staining on IHC-P; Sample: Porcine Kidney Tissue Primary Ab: 10μg/ml Rabbit Anti-Human IgG Antibody Control: Used PBS instead of primary antibody Second Ab: 2?g/ml HRP-Linked

Caprine Anti-Rabbit IgG Polyclonal

Antibody

(Catalog: SAA544Rb19)

Caprine Anti-Rabbit IgG Polyclonal

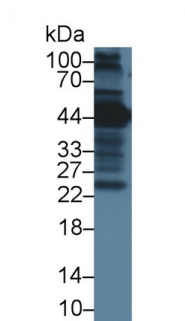
Antibody

(Catalog: SAA544Rb19)

Caprine Anti-Rabbit IgG Polyclonal

Antibody

(Catalog: SAA544Rb19)



Western Blot; Sample: Human Liver  
lysate;

Primary Ab: 1µg/ml Rabbit Anti-Human  
IgG Antibody

Second Ab: 0.2µg/mL HRP-Linked

Caprine Anti-Rabbit IgG Polyclonal  
Antibody

(Catalog: SAA544Rb19)

### [ **IMPORTANT NOTE** ]

The kit is designed for research use only, we will not be responsible for any issue if the kit was used in clinical diagnostic or any other procedures.