

**pA90052Ra01**

**Polyclonal Antibody to Insulin Like Growth Factor Binding Protein 1 (IGFBP1)**  
**Organism: Rattus norvegicus (Rat)**  
***Instruction manual***

FOR IN VITRO USE AND RESEARCH USE ONLY  
 NOT FOR USE IN CLINICAL DIAGNOSTIC PROCEDURES

7th Edition (Revised in May, 2013)

## [ PRODUCT INFORMATION ]

**Immunogen:** IGFBP1, Rat

**Clonality:** Polyclonal

**Host:** Rabbit

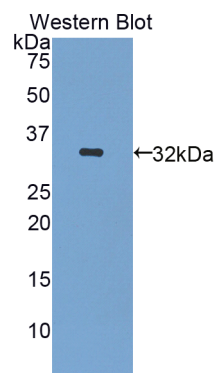
**Immunoglobulin Type:** IgG

**Purification:** Affinity Chromatography.

**Applications:** WB, ICC, IHC-P, IHC-F, ELISA

**Concentration:** 200µg/mL

**UOM:** 100µg



*Sample: Recombinant IGFBP1, Rat*

## [ IMMUNOGEN INFORMATION ]

**Immunogen:** Recombinant IGFBP1 (Met1~Asn272) expressed in *E. coli*.

**USCN Accession No.:** rP90052Ra01

**Sequence:** The target protein is fused with N-terminal His-Tag and its sequence is listed below.

MGHHHHHHSG SEF-MPEFLT VVSW PFLILLSFQV RVVAGAPQPW HCAPCTAERL  
 ELCPPVPASC PEISRPAGCG CCPTCALPLG AACGVATARC AQGLSCRALP GEPRPLHALT  
 RGQGACVLEP AAPATSSLSG SQHEEAKAAV ASEDELAESP EMTEEQLLDS FHLMAPSRED  
 QPILWNAIST YSSMRAREIT DLKKWKEPCQ RELYKVLRL AAAQQKAGDE IYKFYLPNCN  
 KNGFYHSKQC ETSLDGEAGL CWCVPYWSGK KIPGSLETRG DPNCHQYFNV QN

*Unique product* *Superb quality* *Client favorite* *Nicest service*  ISO9001:2008;  ISO13485:2003; 

## [ ANTIBODY SPECIFICITY ]

The antibody is a rabbit polyclonal antibody raised against IGFBP1. It has been selected for its ability to recognize IGFBP1 in immunohistochemical staining and western blotting.

## [ APPLICATIONS ]

Western blotting: 1:100-400

Immunocytochemistry in formalin fixed cells: 1:100-500

Immunohistochemistry in formalin fixed frozen section: 1:100-500

Immunohistochemistry in paraffin section: 1:50-200

Enzyme-linked Immunosorbent Assay: 1:100-200

Optimal working dilutions must be determined by end user.

## [ CONTENTS ]

**Form & Buffer:** Supplied as solution form in PBS, pH7.4, containing 0.02%  $\text{NaN}_3$ , 50% glycerol.

## [ QUALITY CONTROL ]

**Content:** The quality control contains recombinant IGFBP1 (Met1~Asn272) disposed in loading buffer.

**Usage:** 10uL per well when 3,3'-Diaminobenzidine(DAB) as the substrate.  
5uL per well when used in enhanced chemiluminescent (ECL).

**Note:** The quality control is specifically manufactured as the positive control. Not used for other purposes.

**Loading Buffer:** 100mM Tris(pH8.8), 2% SDS, 200mM NaCl, 50% glycerol, BPB 0.01%,  $\text{NaN}_3$  0.02%.

## [ STORAGE ]

Store at 4°C for frequent use. Stored at -20°C to -80°C in a manual defrost freezer for one year without detectable loss of activity. Avoid repeated freeze-thaw cycles.

*Unique product Superb quality Client favorite Nicest service*  ISO9001:2008;  ISO13485:2003; 