

PAA563Ov01

Polyclonal Antibody to Interleukin 1 Beta (IL1b)

Organism Species: *Ovis aries*; *Ovine* (Sheep)

Instruction manual

FOR RESEARCH USE ONLY

NOT FOR USE IN CLINICAL DIAGNOSTIC PROCEDURES

13th Edition (Revised in Aug, 2023)

[PROPERTIES]

Source: Polyclonal antibody preparation

Host: Rabbit

Purification: Antigen-specific affinity chromatography followed by Protein A affinity chromatography

Traits: Liquid

Concentration: 0.5mg/mL

UOM: 50µL

Cross Reactivity: Caprine

Applications: WB; IHC; ICC; IP.

[IMMUNOGEN]

Immunogen: Recombinant IL1b (Met1~Pro266) expressed in *E.coli*

Accession No.: RPA563Ov01

[APPLICATIONS]

Western blotting: 0.01-2µg/mL;

Immunohistochemistry: 5-20µg/mL;

Immunocytochemistry: 5-20µg/mL;

Optimal working dilutions must be determined by end user.

[FORMULATION]

Form & Buffer: Supplied as solution form in PBS, pH7.4, containing 0.02% NaN₃, 50% glycerol.

[STORAGE AND STABILITY]

Storage: Avoid repeated freeze/thaw cycles.

Store at 4°C for frequent use.

Aliquot and store at -20°C for 24 months.

Stability Test: The thermal stability is described by the loss rate. The loss rate was determined by accelerated thermal degradation test, that is, incubate the protein at 37°C for 48h, and no

obvious degradation and precipitation were observed. The loss rate is less than 5% within the expiration date under appropriate storage condition.

[IDENTIFICATION]

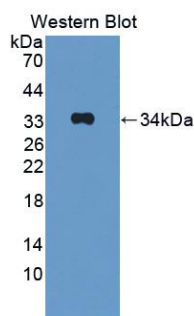
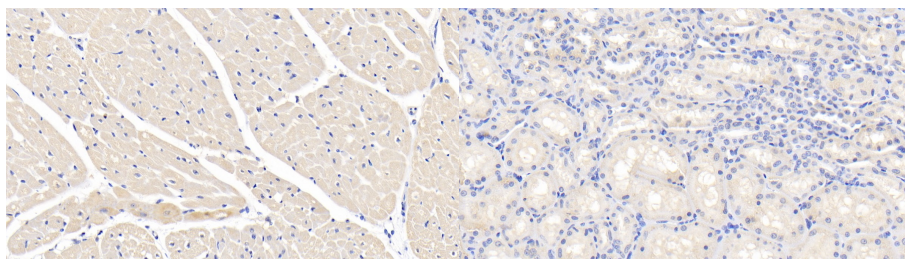


Figure. Western Blot; Sample:
Recombinant IL1b, Human.



DAB staining on IHC-P; Samples:

Caprine Cardiac Muscle Tissue;

Primary Ab: 20?g/ml Rabbit Anti-Ovine
IL1b Antibody Second Ab: 2µg/mL HRP-

Linked Caprine Anti-Rabbit IgG

Polyclonal Antibody (Catalog:

SAA544Rb19)

DAB staining on IHC-P;

Samples: Caprine Kidney Tissue;

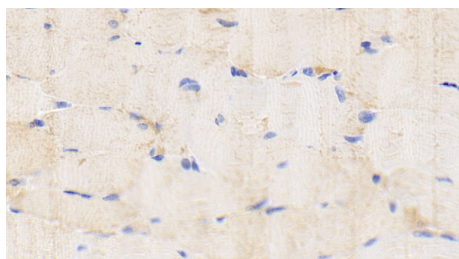
Primary Ab: 20?g/ml Rabbit Anti-Ovine
IL1b Antibody

Second Ab: 2µg/mL HRP-Linked

Caprine Anti-Rabbit IgG Polyclonal

Antibody

(Catalog: SAA544Rb19)



DAB staining on IHC-P;

Samples: Caprine Skeletal muscle
Tissue;

Primary Ab: 20?g/ml Rabbit Anti-Ovine
IL1b Antibody

Second Ab: 2µg/mL HRP-Linked

Caprine Anti-Rabbit IgG Polyclonal

Antibody

(Catalog: SAA544Rb19)

[IMPORTANT NOTE]

The kit is designed for research use only, we will not be responsible for any issue if the kit was used in clinical diagnostic or any other procedures.