

PAB837Bo01

Polyclonal Antibody to Interleukin 2 Receptor Alpha (IL2Ra)

Organism Species: *Bos taurus*; Bovine (Cattle)

Instruction manual

FOR RESEARCH USE ONLY

NOT FOR USE IN CLINICAL DIAGNOSTIC PROCEDURES

13th Edition (Revised in Aug, 2023)

[PROPERTIES]

Source: Polyclonal antibody preparation

Host: Rabbit

Purification: Antigen-specific affinity chromatography followed by Protein A affinity chromatography

Traits: Liquid

Concentration: 0.5mg/mL

UOM: 50µL

Cross Reactivity: Human

Applications: WB; IHC; ICC; IP.

[IMMUNOGEN]

Immunogen: Recombinant IL2Ra (Glu22~Gln243 (Accession # P12342)) expressed in *E.coli*

Accession No.: RPB837Bo01

[APPLICATIONS]

Western blotting: 0.01-2µg/mL

Immunohistochemistry: 5-20µg/mL

Immunocytochemistry: 5-20µg/mL

Optimal working dilutions must be determined by end user.

[FORMULATION]

Form & Buffer: Supplied as solution form in PBS, pH7.4, containing 0.02% NaN₃, 50% glycerol.

[STORAGE AND STABILITY]

Storage: Avoid repeated freeze/thaw cycles.

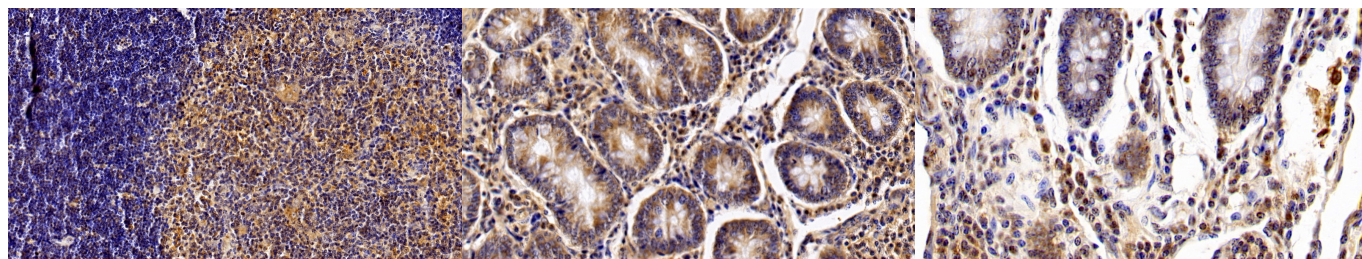
Store at 4°C for frequent use.

Aliquot and store at -20°C for 24 months.

Stability Test: The thermal stability is described by the loss rate. The loss rate was determined by accelerated thermal degradation test, that is, incubate the protein at 37°C for 48h, and no

obvious degradation and precipitation were observed. The loss rate is less than 5% within the expiration date under appropriate storage condition.

[IDENTIFICATION]



DAB staining on IHC-P; Sample:	DAB staining on IHC-P;	DAB staining on IHC-P;
Bovine Thymus Tissue; Primary Ab:	Sample: Bovine Small intestine Tissue;	Sample: Bovine Colon Tissue;
10 ² g/ml Rabbit Anti-Bovine IL2Ra	Primary Ab: 10 ² g/ml Rabbit Anti-Bovine	Primary Ab: 20 ² g/ml Rabbit Anti-Bovine
Antibody Second Ab: 2 ² g/mL HRP-	IL2Ra Antibody	IL2Ra Antibody
Linked Caprine Anti-Rabbit IgG	Second Ab: 2 ² g/mL HRP-Linked	Second Ab: 2 ² g/mL HRP-Linked
Polyclonal Antibody (Catalog:	Caprine Anti-Rabbit IgG Polyclonal	Caprine Anti-Rabbit IgG Polyclonal
SAA544Rb19)	Antibody	Antibody
	(Catalog: SAA544Rb19)	(Catalog: SAA544Rb19)

[IMPORTANT NOTE]

The kit is designed for research use only, we will not be responsible for any issue if the kit was used in clinical diagnostic or any other procedures.