

PAB905Hu01

Polyclonal Antibody to Interleukin 7 Receptor (IL7R)

Organism Species: *Homo sapiens (Human)*

Instruction manual

FOR RESEARCH USE ONLY

NOT FOR USE IN CLINICAL DIAGNOSTIC PROCEDURES

13th Edition (Revised in Aug, 2023)

[PROPERTIES]

Source: Polyclonal antibody preparation

Host: Rabbit

Purification: Antigen-specific affinity chromatography followed by Protein A affinity chromatography

Traits: Liquid

Concentration: 0.5mg/mL

UOM: 100µL

Cross Reactivity: N/A

Applications: WB; IHC

[IMMUNOGEN]

Immunogen: Recombinant IL7R (Lys173~Ala260) expressed in *E.coli*

Accession No.: RPB905Hu01

[APPLICATIONS]

Western blotting: 0.01-2µg/mL;

Immunohistochemistry: 5-20µg/mL;

Optimal working dilutions must be determined by end user.

[FORMULATION]

Form & Buffer: Supplied as solution form in 0.01M PBS, pH7.4, containing 0.05% Proclin-300, 50% glycerol.

[STORAGE AND STABILITY]

Storage: Avoid repeated freeze/thaw cycles.

Store at 4°C for frequent use.

Aliquot and store at -20°C for 24 months.

Stability Test: The thermal stability is described by the loss rate. The loss rate was determined by accelerated thermal degradation test, that is, incubate the protein at 37°C for 48h, and no obvious degradation and precipitation were observed. The loss rate is less than 5% within the

expiration date under appropriate storage condition.

[IDENTIFICATION]

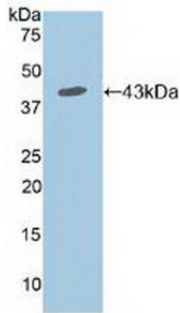
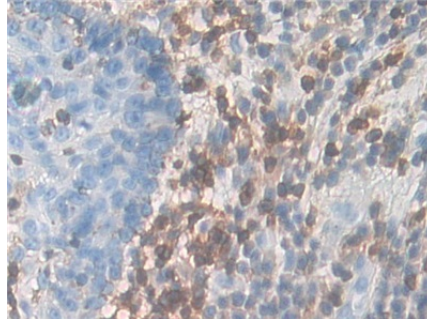
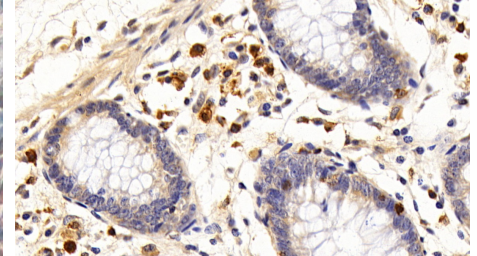


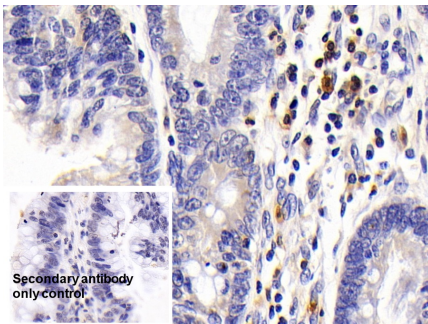
Figure. Western Blot; Sample: Recombinant IL7R, Human.



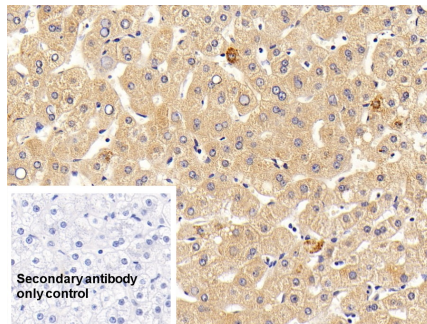
DAB staining on IHC-P;
 Samples: Human Skin cancer Tissue;
 Primary Ab: 10µg/ml Rabbit Anti-Human IL7R Antibody
 Second Ab: 2µg/mL HRP-Linked Caprine Anti-Rabbit IgG Polyclonal Antibody
 (Catalog: SAA544Rb19)



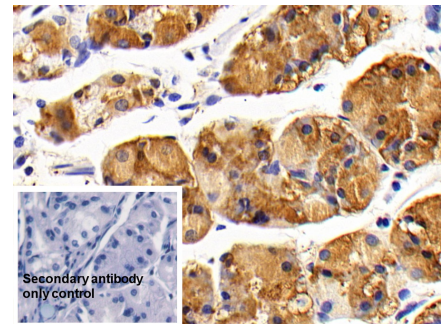
DAB staining on IHC-P;
 Sample: Human Rectum Tissue;
 Primary Ab: 10ug/ml Rabbit Anti-Human IL7R Antibody
 Second Ab: 2µg/mL HRP-Linked Caprine Anti-Rabbit IgG Polyclonal Antibody
 (Catalog: SAA544Rb19)



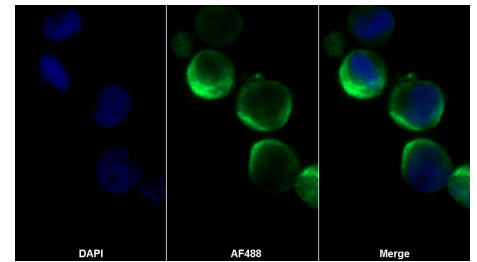
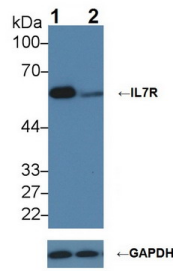
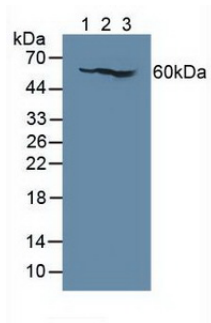
DAB staining on IHC-P;
 Sample: Human Colorectal cancer Tissue
 Primary Ab: 10µg/ml Rabbit Anti-Human IL7R Antibody
 Control: Used PBS instead of primary antibody
 Second Ab: 2µg/ml HRP-Linked Caprine Anti-Rabbit IgG Polyclonal Antibody
 (Catalog: SAA544Rb19)



DAB staining on IHC-P;
 Sample: Human Liver Tissue
 Primary Ab: 10µg/ml Rabbit Anti-Human IL7R Antibody
 Control: Used PBS instead of primary antibody
 Second Ab: 2µg/ml HRP-Linked Caprine Anti-Rabbit IgG Polyclonal Antibody
 (Catalog: SAA544Rb19)



DAB staining on IHC-P;
 Sample: Human Stomach Tissue
 Primary Ab: 10µg/ml Rabbit Anti-Human IL7R Antibody
 Control: Used PBS instead of primary antibody
 Second Ab: 2µg/ml HRP-Linked Caprine Anti-Rabbit IgG Polyclonal Antibody
 (Catalog: SAA544Rb19)



AF488 staining on IF;

Sample: 293F cell

Primary Ab: 10µg/ml Rabbit Anti-Human IL7R Antibody

Second Ab: 2µg/ml AF488-Linked Caprine Anti-Rabbit IgG Polyclonal Antibody

(Catalog: SAA544Rb11)

Western Blot; Sample: Lane1: Human Lung lysate; Lane2: K562 cell lysate; Lane3: Jurkat cell lysate

Primary Ab: 2µg/ml Rabbit Anti-Human IL7R Antibody

Second Ab: 0.2µg/mL HRP-Linked Caprine Anti-Rabbit IgG Polyclonal Antibody

(Catalog: SAA544Rb19)

Knockout Verification:

Lane 1: Wild-type K562 cell lysate; Lane 2: IL7R knockout K562 cell lysate;

Predicted MW: 51,34,29kDa

Observed MW: 60kDa

Primary Ab: 2µg/ml Rabbit Anti-Human IL7R Ab

Second Ab: 0.2µg/mL HRP-Linked

Caprine Anti-Rabbit IgG Polyclonal Antibody

(Catalog: SAA544Rb19)

[**IMPORTANT NOTE**]

The kit is designed for research use only, we will not be responsible for any issue if the kit was used in clinical diagnostic or any other procedures.