

PAH839Hu01

Polyclonal Antibody to Isocitrate Dehydrogenase 1, Soluble (IDH1)

Organism Species: *Homo sapiens (Human)*

Instruction manual

FOR RESEARCH USE ONLY

NOT FOR USE IN CLINICAL DIAGNOSTIC PROCEDURES

13th Edition (Revised in Aug, 2023)

[PROPERTIES]

Source: Polyclonal antibody preparation

Host: Rabbit

Purification: Antigen-specific affinity chromatography followed by Protein A affinity chromatography

Traits: Liquid

Concentration: 0.5mg/mL

UOM: 100µL

Cross Reactivity: Mouse;Porcine

Applications: WB,IHC,ICC/IF

[IMMUNOGEN]

Immunogen: Recombinant IDH1 (Ala74~Ile333) expressed in *E.coli*

Accession No.: RPH839Hu01

[APPLICATIONS]

Western blotting: 0.5-2µg/mL;

Immunohistochemistry: 5-20µg/mL;

Immunocytochemistry: 5-20µg/mL;

Optimal working dilutions must be determined by end user.

[FORMULATION]

Form & Buffer: Supplied as solution form in 0.01M PBS, pH7.4, containing 0.05% Proclin-300, 50% glycerol.

[STORAGE AND STABILITY]

Storage: Avoid repeated freeze/thaw cycles.

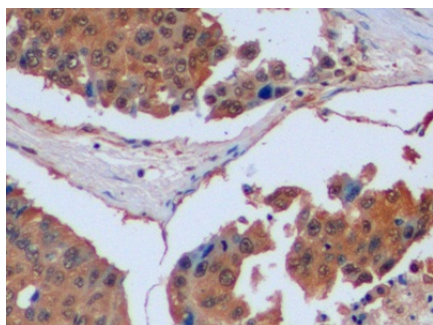
Store at 4°C for frequent use.

Aliquot and store at -20°C for 24 months.

Stability Test: The thermal stability is described by the loss rate. The loss rate was determined by accelerated thermal degradation test, that is, incubate the protein at 37°C for 48h, and no

obvious degradation and precipitation were observed. The loss rate is less than 5% within the expiration date under appropriate storage condition.

[IDENTIFICATION]



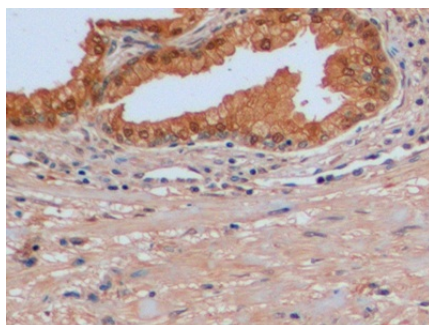
DAB staining on IHC-P;

Samples: Human Liver cancer Tissue;

Primary Ab: 10µg/ml Rabbit Anti-Human IDH1 Antibody

Second Ab: 2µg/mL HRP-Linked Caprine Anti-Rabbit IgG Polyclonal Antibody

(Catalog: SAA544Rb19)



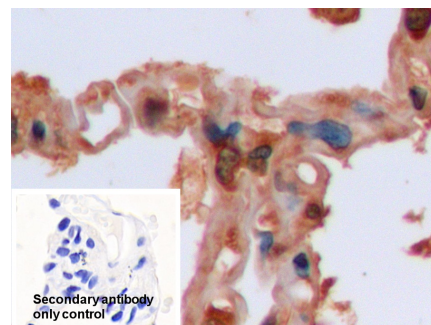
DAB staining on IHC-P;

Samples: Human Prostate Tissue;

Primary Ab: 10µg/ml Rabbit Anti-Human IDH1 Antibody

Second Ab: 2µg/mL HRP-Linked Caprine Anti-Rabbit IgG Polyclonal Antibody

(Catalog: SAA544Rb19)



DAB staining on IHC-P;

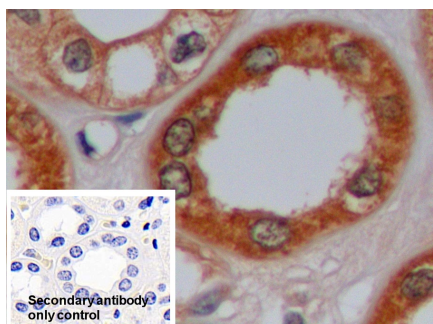
Sample: Human Lung Tissue

Primary Ab: 10µg/ml Rabbit Anti-Human IDH1 Antibody

Control: Used PBS instead of primary antibody

Second Ab: 2µg/ml HRP-Linked Caprine Anti-Rabbit IgG Polyclonal Antibody

(Catalog: SAA544Rb19)



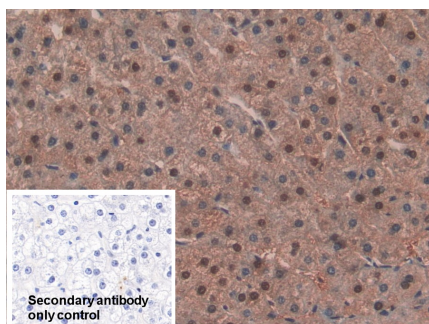
DAB staining on IHC-P;

Sample: Human Kidney Tissue

Primary Ab: 10µg/ml Rabbit Anti-Human IDH1 Antibody

Control: Used PBS instead of primary antibody

Second Ab: 2µg/ml HRP-Linked



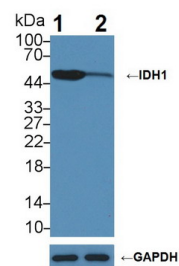
DAB staining on IHC-P;

Sample: Human Liver Tissue

Primary Ab: 20µg/ml Rabbit Anti-Human IDH1 Antibody

Control: Used PBS instead of primary antibody

Second Ab: 2µg/ml HRP-Linked



Knockout Varification:

Lane 1: Wild-type HepG2 cell lysate;

Lane 2: IDH1 knockout HepG2 cell lysate;

Predicted MW: 47kDa

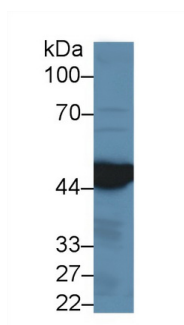
Observed MW: 47kDa

Primary Ab: 2µg/ml Rabbit Anti-Human

Caprine Anti-Rabbit IgG Polyclonal

Antibody

(Catalog: SAA544Rb19)

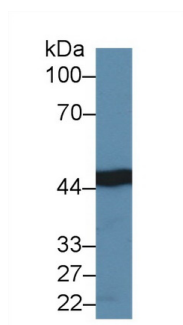


Western Blot; Sample: Mouse Liver
lysate;

Caprine Anti-Rabbit IgG Polyclonal

Antibody

(Catalog: SAA544Rb19)



Western Blot; Sample: Human Liver
lysate;

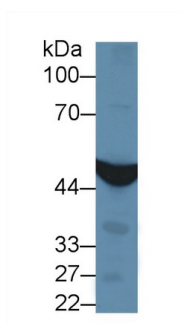
IDH1 Antibody

Second Ab: 0.2µg/mL HRP-Linked

Caprine Anti-Rabbit IgG Polyclonal

Antibody

(Catalog: SAA544Rb19)



Western Blot; Sample: Porcine Liver
lysate;

Primary Ab: 2µg/ml Rabbit Anti-Human

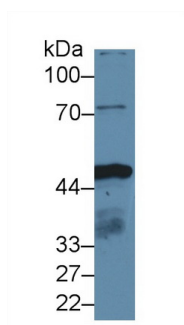
IDH1 Antibody

Second Ab: 0.2µg/mL HRP-Linked

Caprine Anti-Rabbit IgG Polyclonal

Antibody

(Catalog: SAA544Rb19)



Western Blot; Sample: Human HepG2
cell lysate;

Primary Ab: 2µg/ml Rabbit Anti-Human

IDH1 Antibody

Second Ab: 0.2µg/mL HRP-Linked

Caprine Anti-Rabbit IgG Polyclonal

Antibody

(Catalog: SAA544Rb19)

Primary Ab: 2µg/ml Rabbit Anti-Human

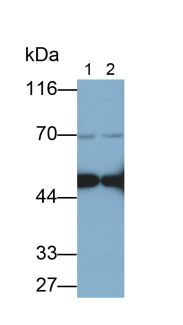
IDH1 Antibody

Second Ab: 0.2µg/mL HRP-Linked

Caprine Anti-Rabbit IgG Polyclonal

Antibody

(Catalog: SAA544Rb19)



Western Blot; Samples: Lane1: LO2
cell lysate; Lane2: HepG2 cell lysate;

Primary Ab: 0.2µg/ml Rabbit Anti-

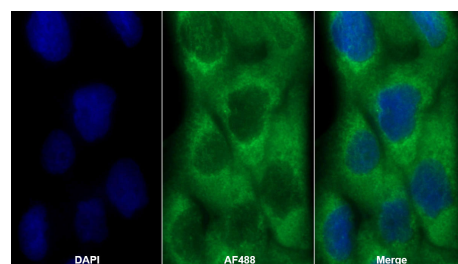
Human IDH1 Antibody

Second Ab: 0.2µg/mL HRP-Linked

Caprine Anti-Rabbit IgG Polyclonal

Antibody

(Catalog: SAA544Rb19)



AF488 staining on IF;

Sample: A431 cell

Primary Ab: 20µg/ml Rabbit Anti-

Human IDH1 Antibody

Second Ab: 2µg/ml AF488-Linked

Caprine Anti-Rabbit IgG Polyclonal

Antibody

(Catalog: SAA544Rb11)

[IMPORTANT NOTE]

The kit is designed for research use only, we will not be responsible for any issue if the kit was used in clinical diagnostic or any other procedures.