

PAH756Mu03

Polyclonal Antibody to Klotho Beta (KLb)

Organism Species: Mus musculus (Mouse)

Instruction manual

FOR IN VITRO USE AND RESEARCH USE ONLY

NOT FOR USE IN CLINICAL DIAGNOSTIC PROCEDURES

9th Edition (Revised in Jul, 2013)

[**PRODUCT INFORMATION**]

Immunogen: KLb, Mouse

Clonality: Polyclonal

Host: Rabbit

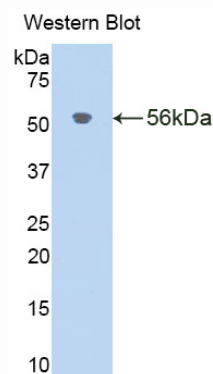
Immunoglobulin Type: IgG

Purification: Affinity Chromatography.

Applications: WB, ICC, IHC-P, IHC-F, ELISA

Concentration: 200µg/mL

UOM: 100µg



Sample: Recombinant KLb, Mouse

[**IMMUNOGEN INFORMATION**]

Immunogen: Recombinant KLb (Met515~Leu965) expressed in *E.coli*.

Accession No.: RPH756Mu03

Sequence: The target protein is fused with N-terminal His-Tag and its sequence is listed below.

MGHHHHHHSGSEF- MKGRFP CDFSWGVTES VLKPEFTVSS PQFTDPHLYV
 WNVGTGNRLLY RVEGVRLKTR PSQCTDYVSI KKRVEMLAKM KVTHYQFALD WTSILPTGNL
 SKVNRQVLRY YRCVVSEGLK LGVFPMVTLY HPTHSHLGLP LPLLSSGGWL NMNTAKAFQD
 YAELCFRELG DLVKLWITIN EPNRLSDMYN RTSNDTYRAA HNLMAHAQV WHLYDRQYRP
 VQHGAVSLSL HCDWAEPANP FVDSHWKAAE RFLQFEIAWF ADPLFKTGDY PSVMKEYIAS
 KNQRGLSSSV LPRFTAKESR LVKGTVDIFYA LNHFTTRFVI HKQLNTNRSV ADRDVQFLQD
 ITRLSSPSRL AVTPWGVRKL LAWIRRNRYR RDIYITANGI DDLALEDQI RKYYLEKYVQ
 EALKAYLIDK VKIKGYAFK LTEEKSKPRF GFFTSDFRAK SSVQFYSKLI SSSGL

[ANTIBODY SPECIFICITY]

The antibody is a rabbit polyclonal antibody raised against KLb. It has been selected for its ability to recognize KLb in immunohistochemical staining and western blotting.

[APPLICATIONS]

Western blotting: 1:100-400

Immunocytochemistry in formalin fixed cells: 1:100-500

Immunohistochemistry in formalin fixed frozen section: 1:100-500

Immunohistochemistry in paraffin section: 1:50-200

Enzyme-linked Immunosorbent Assay: 1:100-200

Optimal working dilutions must be determined by end user.

[CONTENTS]

Form & Buffer: Supplied as solution form in PBS, pH7.4, containing 0.02% NaN_3 , 50% glycerol.

[QUALITY CONTROL]

Content: The quality control contains recombinant KLb (Met515~Leu965) disposed in loading buffer.

Usage: 10uL per well when 3,3'-Diaminobenzidine(DAB) as the substrate.

5uL per well when used in enhanced chemiluminescent (ECL).

Note: The quality control is specifically manufactured as the positive control. Not used for other purposes.

Loading Buffer: 100mM Tris(pH8.8), 2% SDS, 200mM NaCl, 50% glycerol, BPB 0.01%, NaN_3 0.02%.

[STORAGE]

Store at 4°C for frequent use. Stored at -20°C to -80°C in a manual defrost freezer for one year without detectable loss of activity. Avoid repeated freeze-thaw cycles.