

PAE131Ra01**Polyclonal Antibody to Lactate Dehydrogenase C (LDHC)****Organism Species: *Rattus norvegicus* (Rat)*****Instruction manual***

FOR IN VITRO USE AND RESEARCH USE ONLY

NOT FOR USE IN CLINICAL DIAGNOSTIC PROCEDURES

9th Edition (Revised in Jul, 2013)

[PRODUCT INFORMATION]

Immunogen: LDHC, Rat**Clonality:** Polyclonal**Host:** Rabbit**Immunoglobulin Type:** IgG**Purification:** Affinity Chromatography.**Applications:** WB, ICC, IHC-P, IHC-F, ELISA**Concentration:** 200µg/mL**UOM:** 100µg

[IMMUNOGEN INFORMATION]

Immunogen: Recombinant LDHC (Met1~Leu332) expressed in *E.coli*.**Accession No.:** RPE131Ra01**Sequence:** The target protein is fused with two N-terminal Tags, His-tag and T7-tag and its sequence is listed below.

MGSSHHHHHH SSGLVPRGSH MASMTGGQQM GRGSEF- MSTVKEQLIQ NLAPDEKQSR
CKITVVG VGN VGMACAISIL LKGLADELAL VDADENKLKG EALDLLHGSL FLSTPKIVFG
KDYSVSANSK LVIITAGARM VSGESRLALL QRNVTSMKAI VPGVIQNSPD CKIMIVTNPV
DILTYVVWKI SGLPVSSVIG SGCNLD SARF RYLIGEKLGV NPSSCHGWVL GEHGDSSVPI
WSGVNIAGVT LKSLNPAIGS DSDKEQWKT V HKQVVDGGYE VLN LKGYTSW AIALSVTDIA
ASILKNLKR V HAVTTLVKGL YGIKEEIFLS IPCVLGQSGI TDLVKVMNMT EEEALFKKSC
DILWNIQKDL QL

[ANTIBODY SPECIFICITY]

The antibody is a rabbit polyclonal antibody raised against LDHC. It has been selected for its ability to recognize LDHC in immunohistochemical staining and western blotting.

[APPLICATIONS]

Western blotting: 1:50-400

Immunocytochemistry in formalin fixed cells: 1:50-500

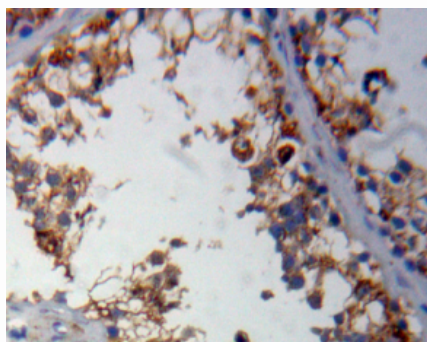
Immunohistochemistry in formalin fixed frozen section: 1:50-500

Immunohistochemistry in paraffin section: 1:10-100

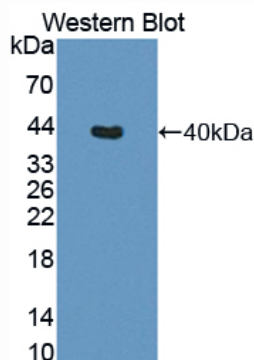
Enzyme-linked Immunosorbent Assay: 1:100-200

Optimal working dilutions must be determined by end user.

[IMAGES]



Used in DAB staining on formalin fixed
paraffin-embedded testis tissue



Used in Western Blot, Sample:
Recombinant LDHC, Rat

[CONTENTS]

Form & Buffer: Supplied as solution form in PBS, pH7.4, containing 0.02% NaN_3 , 50% glycerol.

[QUALITY CONTROL]

Content: The quality control contains recombinant LDHC (Met1~Leu332) disposed in loading buffer.

Usage: 10uL per well when 3,3'-Diaminobenzidine(DAB) as the substrate.
5uL per well when used in enhanced chemiluminescent (ECL).

Note: The quality control is specifically manufactured as the positive control. Not used for other purposes.

Loading Buffer: 100mM Tris(pH8.8), 2% SDS, 200mM NaCl, 50% glycerol, BPB 0.01%, NaN_3 0.02%.

[STORAGE]

Store at 4°C for frequent use. Stored at -20°C to -80°C in a manual defrost freezer for one year without detectable loss of activity. Avoid repeated freeze-thaw cycles.