

PAD387Ra01

Polyclonal Antibody to Leukocyte Elastase Inhibitor (LEI)

Organism Species: *Rattus norvegicus* (Rat)

Instruction manual

FOR RESEARCH USE ONLY

NOT FOR USE IN CLINICAL DIAGNOSTIC PROCEDURES

13th Edition (Revised in Aug, 2023)

[PROPERTIES]

Source: Polyclonal antibody preparation

Host: Rabbit

Purification: Antigen-specific affinity chromatography followed by Protein A affinity chromatography

Traits: Liquid

Concentration: 0.5mg/ml

UOM: 100µl

Cross Reactivity: Mouse

Applications: WB; IHC; ICC/IF

[IMMUNOGEN]

Immunogen: Recombinant LEI (His17~Glu332 (Accession # Q4G075)) expressed in *E.coli*

Accession No.: RPD387Ra01

[APPLICATIONS]

Western blotting: 0.01-3µg/mL;

Immunohistochemistry: 5-20µg/mL;

Immunocytochemistry: 5-20µg/mL;

Optimal working dilutions must be determined by end user.

[FORMULATION]

Form & Buffer: Supplied as solution form in 0.01M PBS, pH7.4, containing 0.05% Proclin-300, 50% glycerol.

[STORAGE AND STABILITY]

Storage: Avoid repeated freeze/thaw cycles.

Store at 4°C for frequent use.

Aliquot and store at -20°C for 24 months.

Stability Test: The thermal stability is described by the loss rate. The loss rate was determined by accelerated thermal degradation test, that is, incubate the protein at 37°C for 48h, and no

obvious degradation and precipitation were observed. The loss rate is less than 5% within the expiration date under appropriate storage condition.

[IDENTIFICATION]

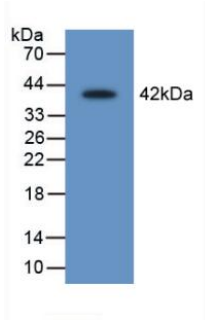
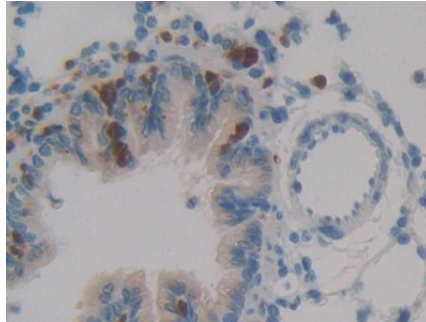
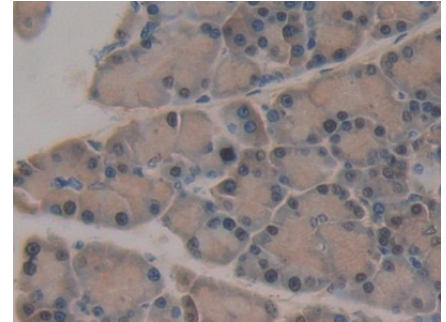


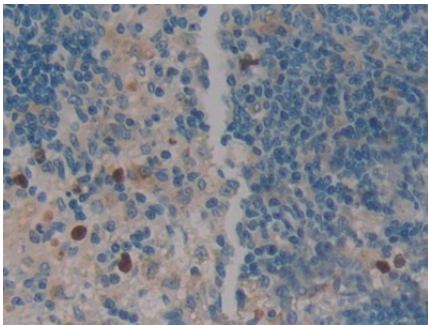
Figure. Western Blot; Sample:
Recombinant LEI, Rat.



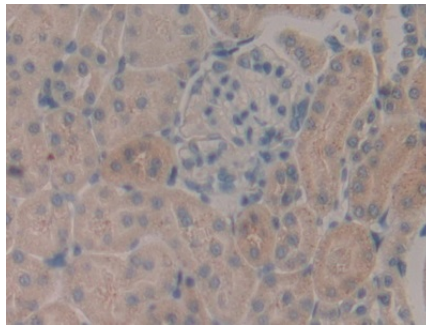
DAB staining on IHC-P;
Samples: Rat Lung Tissue;
Primary Ab: 10µg/ml Rabbit Anti-Rat
LEI Antibody
Second Ab: 2µg/mL HRP-Linked
Caprine Anti-Rabbit IgG Polyclonal
Antibody
(Catalog: SAA544Rb19)



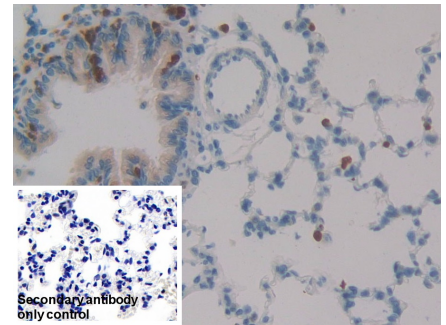
DAB staining on IHC-P;
Samples: Rat Pancreas Tissue;
Primary Ab: 10µg/ml Rabbit Anti-Rat
LEI Antibody
Second Ab: 2µg/mL HRP-Linked
Caprine Anti-Rabbit IgG Polyclonal
Antibody
(Catalog: SAA544Rb19)



DAB staining on IHC-P;
Samples: Rat Spleen Tissue;
Primary Ab: 10µg/ml Rabbit Anti-Rat
LEI Antibody
Second Ab: 2µg/mL HRP-Linked
Caprine Anti-Rabbit IgG Polyclonal
Antibody
(Catalog: SAA544Rb19)

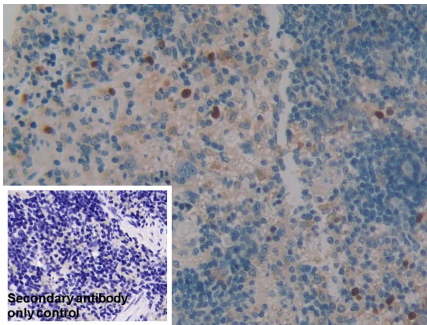


DAB staining on IHC-P;
Samples: Rat Kidney Tissue;
Primary Ab: 10µg/ml Rabbit Anti-Rat
LEI Antibody
Second Ab: 2µg/mL HRP-Linked
Caprine Anti-Rabbit IgG Polyclonal
Antibody
(Catalog: SAA544Rb19)



DAB staining on IHC-P;
Sample: Rat Lung Tissue
Primary Ab: 10µg/ml Rabbit Anti-Rat
LEI Antibody
Control: Used PBS instead of primary
antibody
Second Ab: 2µg/ml HRP-Linked
Caprine Anti-Rabbit IgG Polyclonal
Antibody

(Catalog: SAA544Rb19)



DAB staining on IHC-P;

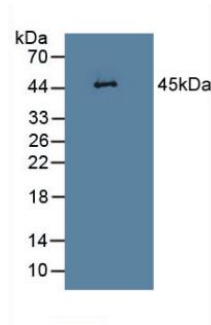
Sample: Rat Spleen Tissue

Primary Ab: 10µg/ml Rabbit Anti-Rat
LEI Antibody

Control: Used PBS instead of primary
antibody

Second Ab: 2µg/ml HRP-Linked
Caprine Anti-Rabbit IgG Polyclonal
Antibody

(Catalog: SAA544Rb19)

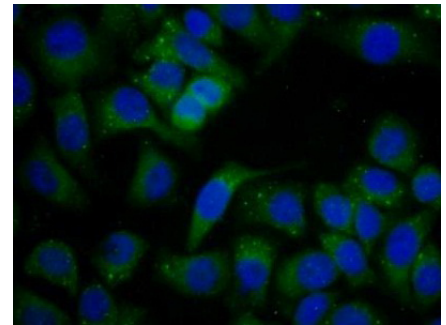


Western Blot; Sample: Rat Heart lysate

Primary Ab: 3µg/ml Rabbit Anti-Rat LEI
Antibody

Second Ab: 0.2µg/ml HRP-Linked
Caprine Anti-Rabbit IgG Polyclonal
Antibody

(Catalog: SAA544Rb19)



FITC staining on IF;

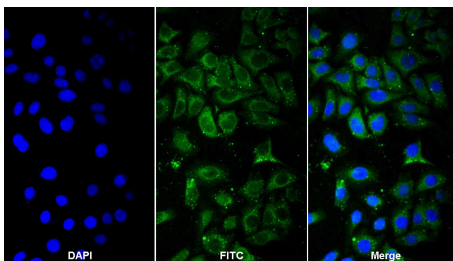
Samples: Human HeLa Cells;

Primary Ab: 10µg/ml Rabbit Anti-Rat
LEI Antibody

Second Ab: 1µg/ml FITC-Linked
Caprine Anti-Rabbit IgG Polyclonal

Antibody

(Catalog: SAA544Rb18)



FITC staining on IF;

Sample: HeLa cell

Primary Ab: 10µg/ml Rabbit Anti-Rat
LEI Antibody

Second Ab: 2µg/ml FITC-Linked
Caprine Anti-Rabbit IgG Polyclonal
Antibody

(Catalog: SAA544Rb11)

[IMPORTANT NOTE]

The kit is designed for research use only, we will not be responsible for any issue if the kit was used in clinical diagnostic or any other procedures.