

**PAB572Hu01**  
**Polyclonal Antibody**  
**To Lymphocyte Function Associated Antigen 1 Alpha (LFA1a)**  
**Organism Species: Homo sapiens (Human)**  
***Instruction manual***

FOR IN VITRO USE AND RESEARCH USE ONLY  
NOT FOR USE IN CLINICAL DIAGNOSTIC PROCEDURES

---

12th Edition (Revised in Aug, 2016)

## **[ PROPERTIES ]**

**Source:** Polyclonal antibody preparation

**Host:** Rabbit

**Purification:** Antigen-specific Affinity Chromatography.

**Traits:** Liquid

**Concentration:** 500µg/mL

**UOM:** 100µg

**Applications:** WB; ICC; IHC-P; IHC-F; ELISA.

## **[ IMMUNOGEN ]**

**Immunogen:** Recombinant LFA1a (Asn809~His1066) expressed in *E.coli*.

**Accession No.:** RPB572Hu01

## **[ APPLICATIONS ]**

Western blotting: 1-5µg/mL

Immunocytochemistry in formalin fixed cells: 5-20µg/mL

Immunohistochemistry in formalin fixed frozen section: 5-20µg/mL

Immunohistochemistry in paraffin section: 5-20µg/mL

Enzyme-linked Immunosorbent Assay: 0.05-2µg/mL

Optimal working dilutions must be determined by end user.

## **[ FORMULATION ]**

**Form & Buffer:** Supplied as solution form in 0.01M PBS, pH7.4, containing 0.05% Proclin-300, 50% glycerol.

## **[ STORAGE AND STABILITY ]**

**Storage:** Avoid repeated freeze/thaw cycles.

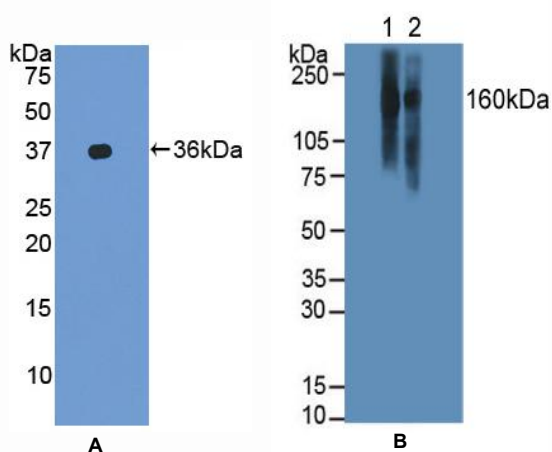
Store at 4°C for frequent use.

Aliquot and store at -20°C for two years.

**Stability Test:** The thermal stability is described by the loss rate. The loss rate was determined by accelerated thermal degradation test, that is, incubate the protein at 37°C for 48h, and no obvious degradation and precipitation were

observed. The loss rate is less than 5% within the expiration date under appropriate storage condition.

## [ IDENTIFICATION ]



**Figure 1. Western Blot**

**A. Sample: Recombinant LFA1a, Human**

**B. Lane1: Human Jurkat Cells**

**Lane2: Human Raji Cells**

**Primary Ab: 3µg/mL Rabbit Anti-Human LFA1a Ab**

**Second Ab: 1:2000 Dilution of HRP-Linked Guinea pig**

**Anti-Rabbit Ab (Catalog: SAA544Rb59)**