

**PAA096Hu01**

**Polyclonal Antibody to Macrophage Inflammatory Protein 3 Beta (MIP3b)**

**Organism Species: *Homo sapiens (Human)***

***Instruction manual***

**FOR RESEARCH USE ONLY**

**NOT FOR USE IN CLINICAL DIAGNOSTIC PROCEDURES**

---

13th Edition (Revised in Aug, 2023)

## **[ PROPERTIES ]**

**Source:** Polyclonal antibody preparation

**Host:** Rabbit

**Purification:** Antigen-specific affinity chromatography followed by Protein A affinity chromatography

**Traits:** Liquid

**Concentration:** 0.5mg/mL

**UOM:** 100µL

**Cross Reactivity:** Porcine

**Applications:** WB; IHC; ICC; IP.

## **[ IMMUNOGEN ]**

**Immunogen:** Recombinant MIP3b (Gly22~Ser98) expressed in *E.coli*

**Accession No.:** RPA096Hu01

## **[ APPLICATIONS ]**

Western blotting: 0.01-2µg/mL

Immunohistochemistry: 5-20µg/mL

Immunocytochemistry: 5-20µg/mL

Optimal working dilutions must be determined by end user.

## **[ FORMULATION ]**

**Form & Buffer:** Supplied as solution form in 0.01M PBS, pH7.4, containing 0.05% Proclin-300, 50% glycerol.

## **[ STORAGE AND STABILITY ]**

**Storage:** Avoid repeated freeze/thaw cycles.

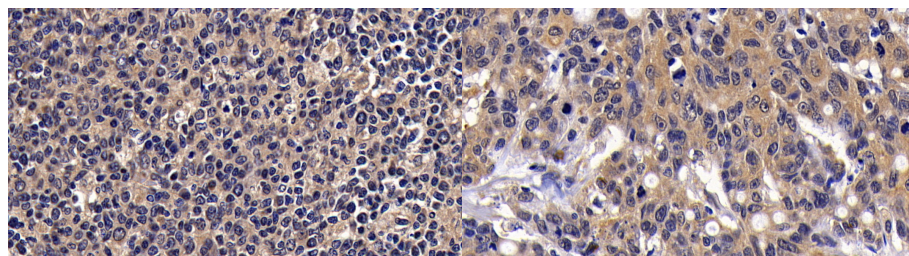
Store at 4°C for frequent use.

Aliquot and store at -20°C for 24 months.

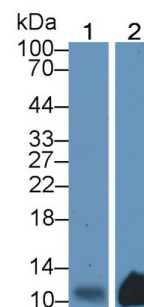
**Stability Test:** The thermal stability is described by the loss rate. The loss rate was determined by accelerated thermal degradation test, that is, incubate the protein at 37°C for 48h, and no

obvious degradation and precipitation were observed. The loss rate is less than 5% within the expiration date under appropriate storage condition.

## [ IDENTIFICATION ]



DAB staining on IHC-P; Samples:	DAB staining on IHC-P;
Human amygdalitis Tissue; Primary Ab:	Samples: Human Lymphoma Tissue;
20?g/ml Rabbit Anti-Human MIP3b	Primary Ab: 20?g/ml Rabbit Anti-
Antibody Second Ab: 2μg/mL HRP-	Human MIP3b Antibody
Linked Caprine Anti-Rabbit IgG	Second Ab: 2μg/mL HRP-Linked
Polyclonal Antibody (Catalog:	Caprine Anti-Rabbit IgG Polyclonal
SAA544Rb19)	Antibody
	(Catalog: SAA544Rb19)



Western Blot; Sample: Lane1: Human  
Leukocyte lysate; Lane2: Porcine  
Lymph node lysate  
Primary Ab: 2?g/ml Rabbit Anti-Human  
MIP3b Antibody  
Second Ab: 0.2μg/mL HRP-Linked  
Caprine Anti-Rabbit IgG Polyclonal  
Antibody  
(Catalog: SAA544Rb19)

## [ IMPORTANT NOTE ]

The kit is designed for research use only, we will not be responsible for any issue if the kit was used in clinical diagnostic or any other procedures.