

**PAB102Hu01**

**Polyclonal Antibody to Myosin Light Chain 2 (MYL2)**

**Organism Species: *Homo sapiens (Human)***

***Instruction manual***

**FOR RESEARCH USE ONLY**

**NOT FOR USE IN CLINICAL DIAGNOSTIC PROCEDURES**

---

13th Edition (Revised in Aug, 2023)

## **[ PROPERTIES ]**

**Source:** Polyclonal antibody preparation

**Host:** Rabbit

**Purification:** Antigen-specific affinity chromatography followed by Protein A affinity chromatography

**Traits:** Liquid

**Concentration:** 0.33mg/mL

**UOM:** 200µL

**Cross Reactivity:** Mouse;Rat;Porcine.

**Applications:** WB; IHC; ICC; IP.

## **[ IMMUNOGEN ]**

**Immunogen:** Recombinant MYL2 (Ala2~Ile159) expressed in *E.coli*

**Accession No.:** RPB102Hu01

## **[ APPLICATIONS ]**

Western blotting: 0.01-2µg/mL;

Immunohistochemistry: 5-20µg/mL;

Immunocytochemistry: 5-20µg/mL;

Optimal working dilutions must be determined by end user.

## **[ FORMULATION ]**

**Form & Buffer:** Supplied as solution form in 0.01M PBS, pH7.4, containing 0.05% Proclin-300, 50% glycerol.

## **[ STORAGE AND STABILITY ]**

**Storage:** Avoid repeated freeze/thaw cycles.

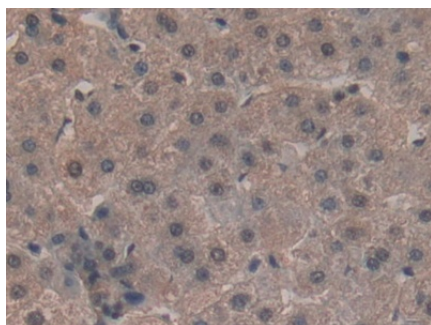
Store at 4°C for frequent use.

Aliquot and store at -20°C for 24 months.

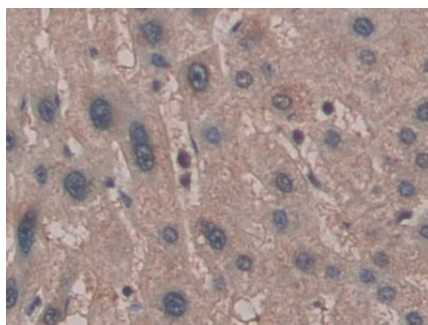
**Stability Test:** The thermal stability is described by the loss rate. The loss rate was determined by accelerated thermal degradation test, that is, incubate the protein at 37°C for 48h, and no

obvious degradation and precipitation were observed. The loss rate is less than 5% within the expiration date under appropriate storage condition.

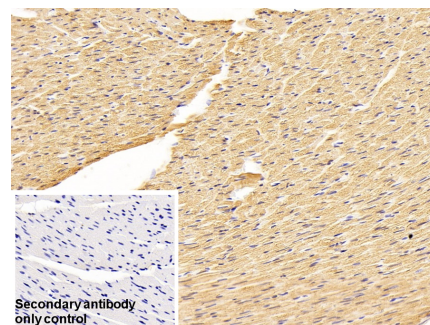
## [ IDENTIFICATION ]



DAB staining on IHC-P; Samples:  
Human Liver Tissue; Primary Ab:  
20µg/ml Rabbit Anti-Human MYL2  
Antibody Second Ab: 2µg/mL HRP-  
Linked Caprine Anti-Rabbit IgG  
Polyclonal Antibody (Catalog:  
SAA544Rb19)



DAB staining on IHC-P;  
Samples: Human Liver cancer Tissue;  
Primary Ab: 20µg/ml Rabbit Anti-  
Human MYL2 Antibody  
Second Ab: 2µg/mL HRP-Linked  
Caprine Anti-Rabbit IgG Polyclonal  
Antibody  
(Catalog: SAA544Rb19)



DAB staining on IHC-P;  
Sample: Rat Cardiac Muscle Tissue  
Primary Ab: 10µg/ml Rabbit Anti-  
Human MYL2 Antibody  
Control: Used PBS instead of primary  
antibody  
Second Ab: 2?g/ml HRP-Linked  
Caprine Anti-Rabbit IgG Polyclonal  
Antibody  
(Catalog: SAA544Rb19)

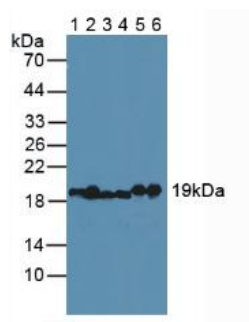
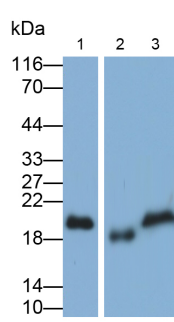


Figure. Western Blot; Sample: Lane1:  
Human Serum; Lane2: Rat Heart  
Tissue; Lane3: Rat Skin Tissue; Lane4:  
Rat Skeletal Muscle Tissue; Lane5:  
Mouse Heart Tissue; Lane6: Porcine  
Heart Tissue.



Western Blot; Samples: Lane1: Rat  
Heart lysate; Lane2: Rat Skeletal  
muscle lysate; Lane3: Mouse Heart  
lysate;  
Primary Ab: 0.2µg/ml Rabbit Anti-  
Human MYL2 Antibody  
Second Ab: 0.2?g/ml HRP-Linked

Caprine Anti-Rabbit IgG Polyclonal

Antibody

(Catalog: SAA544Rb19)

**[ IMPORTANT NOTE ]**

The kit is designed for research use only, we will not be responsible for any issue if the kit was used in clinical diagnostic or any other procedures.