

**PAA105Hu02**

**Polyclonal Antibody to Nerve Growth Factor (NGF)**

**Organism Species: *Homo sapiens (Human)***

***Instruction manual***

FOR RESEARCH USE ONLY

NOT FOR USE IN CLINICAL DIAGNOSTIC PROCEDURES

---

12th Edition (Revised in Aug, 2016)

### **[ PROPERTIES ]**

**Source:** Polyclonal antibody preparation

**Host:** Rabbit

**Purification:** Antigen-specific affinity chromatography followed by Protein A affinity chromatography

**Traits:** Liquid

**Concentration:** 0.5mg/ml

**UOM:** 100µl

**Cross Reactivity:** Porcine

**Applications:** WB; IHC; ICC; IP.

### **[ IMMUNOGEN ]**

**Immunogen:** Recombinant NGF (Ser122~Ala241) expressed in *E.coli*

**Accession No.:** RPA105Hu02

### **[ APPLICATIONS ]**

Western blotting: 0.5-2µg/mL;

Immunohistochemistry: 5-20µg/mL;

Immunocytochemistry: 5-20µg/mL;

Optimal working dilutions must be determined by end user.

### **[ FORMULATION ]**

**Form & Buffer:** Supplied as solution form in 0.01M PBS, pH7.4, containing 0.05% Proclin-300, 50% glycerol.

### **[ STORAGE AND STABILITY ]**

**Storage:** Avoid repeated freeze/thaw cycles.

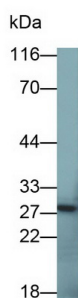
Store at 4°C for frequent use.

Aliquot and store at -20°C for 24 months.

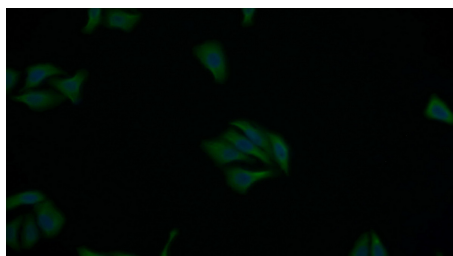
**Stability Test:** The thermal stability is described by the loss rate. The loss rate was determined by accelerated thermal degradation test, that is, incubate the protein at 37°C for 48h, and no

obvious degradation and precipitation were observed. The loss rate is less than 5% within the expiration date under appropriate storage condition.

### [ IDENTIFICATION ]



Western Blot; Sample: Porcine  
Cerebrum lysate Primary Ab: 0.3µg/ml  
Rabbit Anti-Human NGF Antibody  
Second Ab: 0.2µg/mL HRP-Linked  
Caprine Anti-Rabbit IgG Polyclonal  
Antibody (Catalog: SAA544Rb19)



FITC staining on IF; Samples: Human

HepG2 cell; Primary Ab: 20µg/ml  
Rabbit Anti-Human NGF Antibody  
Second Ab: 1.5µg/ml FITC-Linked  
Caprine Anti-Rabbit IgG Polyclonal  
Antibody (Catalog: SAA544Rb18)

### [ IMPORTANT NOTE ]

The kit is designed for research use only, we will not be responsible for any issue if the kit was used in clinical diagnostic or any other procedures.