

PAB524Hu01

Polyclonal Antibody to Neuronal Apoptosis Inhibitory Protein (NAIP)

Organism Species: *Homo sapiens (Human)*

Instruction manual

FOR RESEARCH USE ONLY

NOT FOR USE IN CLINICAL DIAGNOSTIC PROCEDURES

13th Edition (Revised in Aug, 2023)

[PROPERTIES]

Source: Polyclonal antibody preparation

Host: Rabbit

Purification: Antigen-specific affinity chromatography followed by Protein A affinity chromatography

Traits: Liquid

Concentration: 0.5mg/mL

UOM: 20µL

Cross Reactivity: N/A

Applications: WB; IHC; ICC; IP.

[IMMUNOGEN]

Immunogen: Recombinant NAIP (Asn923~Val1148) expressed in *E.coli*

Accession No.: RPB524Hu01

[APPLICATIONS]

Western blotting: 0.01-2µg/mL;

Immunohistochemistry: 5-20µg/mL;

Immunocytochemistry: 5-20µg/mL;

Optimal working dilutions must be determined by end user.

[FORMULATION]

Form & Buffer: Supplied as solution form in PBS, pH7.4, containing 0.02% NaN₃, 50% glycerol.

[STORAGE AND STABILITY]

Storage: Avoid repeated freeze/thaw cycles.

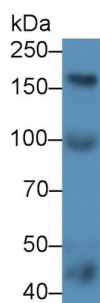
Store at 4°C for frequent use.

Aliquot and store at -20°C for 24 months.

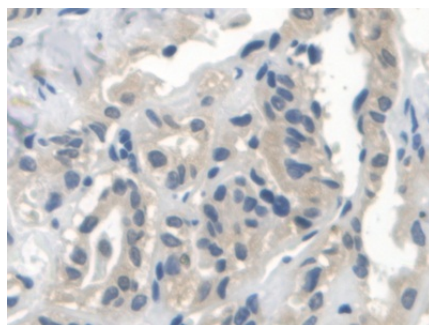
Stability Test: The thermal stability is described by the loss rate. The loss rate was determined by accelerated thermal degradation test, that is, incubate the protein at 37°C for 48h, and no

obvious degradation and precipitation were observed. The loss rate is less than 5% within the expiration date under appropriate storage condition.

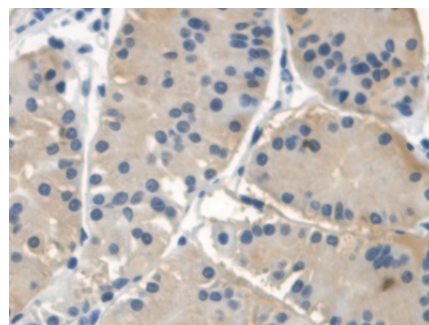
[IDENTIFICATION]



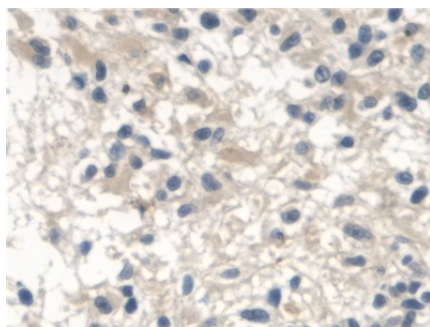
Western Blot; Sample: Human Serum
Primary Ab: 1.5 μ g/ml Rabbit Anti-Human NAIP Antibody Second Ab: 0.2 μ g/mL HRP-Linked Caprine Anti-Rabbit IgG Polyclonal Antibody (Catalog: SAA544Rb19)



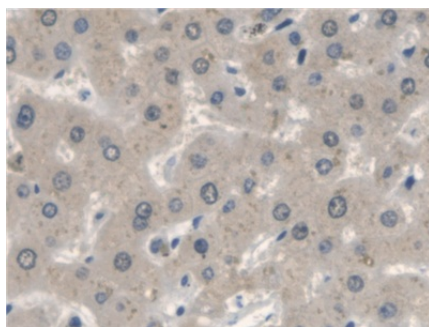
DAB staining on IHC-P; Samples: Human Thyroid cancer Tissue; Primary Ab: 20 μ g/ml Rabbit Anti-Human NAIP Antibody Second Ab: 2 μ g/mL HRP-Linked Caprine Anti-Rabbit IgG Polyclonal Antibody (Catalog: SAA544Rb19)



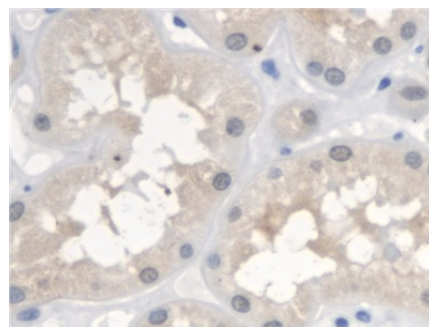
DAB staining on IHC-P; Samples: Human Stomach Tissue; Primary Ab: 20 μ g/ml Rabbit Anti-Human NAIP Antibody Second Ab: 2 μ g/mL HRP-Linked Caprine Anti-Rabbit IgG Polyclonal Antibody (Catalog: SAA544Rb19)



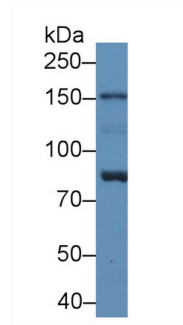
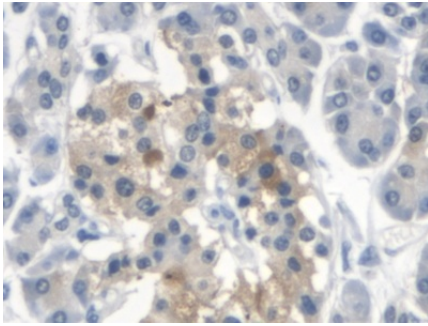
DAB staining on IHC-P; Samples: Human Glioma Tissue; Primary Ab: 20 μ g/ml Rabbit Anti-Human NAIP Antibody Second Ab: 2 μ g/mL HRP-Linked Caprine Anti-Rabbit IgG Polyclonal Antibody (Catalog: SAA544Rb19)



DAB staining on IHC-P; Samples: Human Liver Tissue; Primary Ab: 20 μ g/ml Rabbit Anti-Human NAIP Antibody Second Ab: 2 μ g/mL HRP-Linked Caprine Anti-Rabbit IgG Polyclonal Antibody (Catalog: SAA544Rb19)



DAB staining on IHC-P; Samples: Human Kidney Tissue; Primary Ab: 20 μ g/ml Rabbit Anti-Human NAIP Antibody Second Ab: 2 μ g/mL HRP-Linked Caprine Anti-Rabbit IgG Polyclonal Antibody (Catalog: SAA544Rb19)



DAB staining on IHC-P;

Samples: Human Pancreatic cancer

Tissue;

Primary Ab: 20µg/ml Rabbit Anti-

Human NAIP Antibody

Second Ab: 2µg/mL HRP-Linked

Caprine Anti-Rabbit IgG Polyclonal

Antibody

(Catalog: SAA544Rb19)

Western Blot; Sample: Human Lung

lysate;

Primary Ab: 1µg/ml Rabbit Anti-Human

NAIP Antibody

Second Ab: 0.2µg/mL HRP-Linked

Caprine Anti-Rabbit IgG Polyclonal

Antibody

(Catalog: SAA544Rb19)

[**IMPORTANT NOTE**]

The kit is designed for research use only, we will not be responsible for any issue if the kit was used in clinical diagnostic or any other procedures.