

PAB824Hu01

Polyclonal Antibody to Nuclear Factor Kappa B (NFkB)

Organism Species: *Homo sapiens (Human)*

Instruction manual

FOR RESEARCH USE ONLY

NOT FOR USE IN CLINICAL DIAGNOSTIC PROCEDURES

13th Edition (Revised in Aug, 2023)

[PROPERTIES]

Source: Polyclonal antibody preparation

Host: Rabbit

Purification: Antigen-specific affinity chromatography followed by Protein A affinity chromatography

Traits: Liquid

Concentration: 0.5mg/mL

UOM: 10µL

Cross Reactivity: Mouse;Rat;Porcine;Bovine

Applications: WB; IHC; ICC; IP.

[IMMUNOGEN]

Immunogen: Recombinant NFκB (Pro42~Met367) expressed in *E.coli*

Accession No.: RPB824Hu01

[APPLICATIONS]

Western blotting: 0.01-2µg/mL;

Immunohistochemistry: 5-20µg/mL;

Immunocytochemistry: 5-20µg/mL;

Optimal working dilutions must be determined by end user.

[FORMULATION]

Form & Buffer: Supplied as solution form in 0.01M PBS, pH7.4, containing 0.05% Proclin-300, 50% glycerol.

[STORAGE AND STABILITY]

Storage: Avoid repeated freeze/thaw cycles.

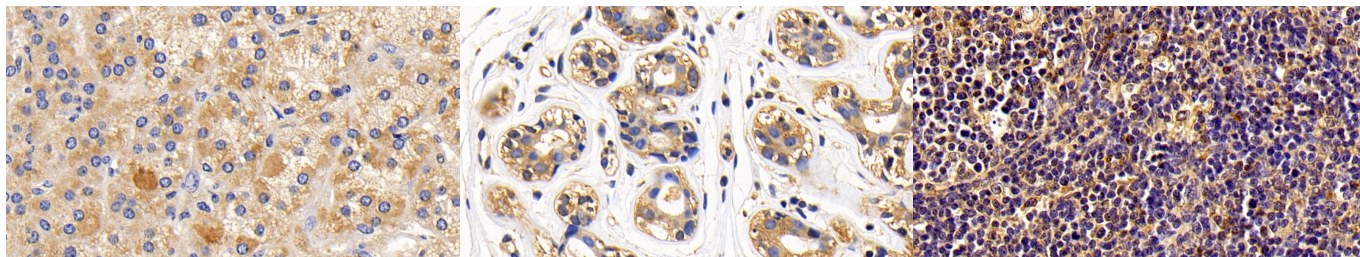
Store at 4°C for frequent use.

Aliquot and store at -20°C for 24 months.

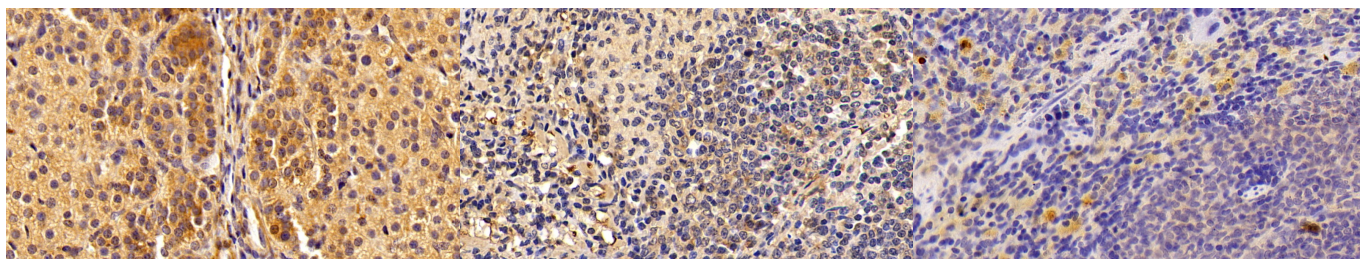
Stability Test: The thermal stability is described by the loss rate. The loss rate was determined by accelerated thermal degradation test, that is, incubate the protein at 37°C for 48h, and no

obvious degradation and precipitation were observed. The loss rate is less than 5% within the expiration date under appropriate storage condition.

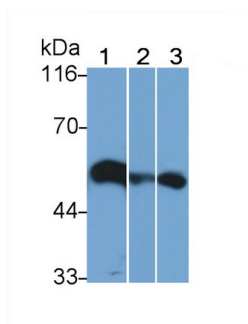
[IDENTIFICATION]



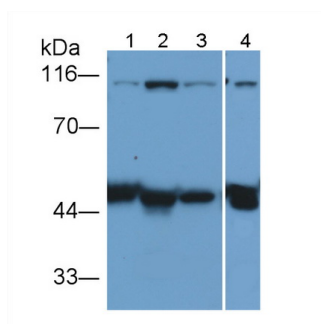
| | | |
|--|---|---|
| DAB staining on IHC-P; Human Adrenal gland Tissue; Primary Ab: 20ug/ml Rabbit Anti-Human NFkB Antibody Second Ab: 2µg/mL HRP- Linked Caprine Anti-Rabbit IgG Polyclonal Antibody (Catalog: SAA544Rb19) | DAB staining on IHC-P; Sample: Human Breast cancer Tissue; Primary Ab: 20ug/ml Rabbit Anti- Human NFkB Antibody Second Ab: 2µg/mL HRP-Linked Caprine Anti-Rabbit IgG Polyclonal Antibody (Catalog: SAA544Rb19) | DAB staining on IHC-P; Samples: Porcine Lymph node Tissue; Primary Ab: 20?g/ml Rabbit Anti- Human NFkB Antibody Second Ab: 2µg/mL HRP-Linked Caprine Anti-Rabbit IgG Polyclonal Antibody (Catalog: SAA544Rb19) |
|--|---|---|



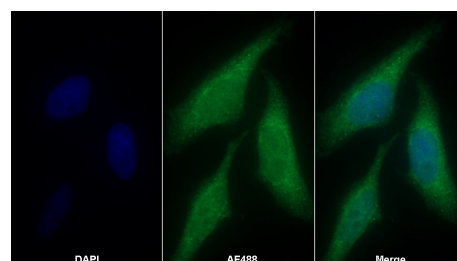
| | | |
|---|--|--|
| DAB staining on IHC-P; Samples: Porcine Adrenal gland Tissue; Primary Ab: 20?g/ml Rabbit Anti- Human NFkB Antibody Second Ab: 2µg/mL HRP-Linked Caprine Anti-Rabbit IgG Polyclonal Antibody (Catalog: SAA544Rb19) | DAB staining on IHC-P; Sample: Porcine Spleen Tissue; Primary Ab: 20ug/ml Rabbit Anti- Human NFkB Antibody Second Ab: 2µg/mL HRP-Linked Caprine Anti-Rabbit IgG Polyclonal Antibody (Catalog: SAA544Rb19) | DAB staining on IHC-P; Sample: Rat Spleen Tissue; Primary Ab: 20?g/ml Rabbit Anti- Human NFkB Antibody Second Ab: 2µg/mL HRP-Linked Caprine Anti-Rabbit IgG Polyclonal Antibody (Catalog: SAA544Rb19) |
|---|--|--|



Western Blot; Sample: Lane1: Mouse Lung lysate; Lane2: Mouse Spleen lysate; Lane3: Bovine Spleen lysate
Primary Ab: 0.5ug/ml Rabbit Anti-Human NFkB Antibody
Second Ab: 0.2µg/mL HRP-Linked Caprine Anti-Rabbit IgG Polyclonal Antibody
(Catalog: SAA544Rb19)



Western Blot; Sample: Lane1: Human Lung lysate; Lane2: Raji cell lysate; Lane3: MCF7 cell lysate; Lane4: Porcine Spleen lysate
Primary Ab: 0.5ug/ml Rabbit Anti-Human NFkB Antibody
Second Ab: 0.2µg/mL HRP-Linked Caprine Anti-Rabbit IgG Polyclonal Antibody
(Catalog: SAA544Rb19)



AF488 staining on IF;
Sample: HepG2 cell
Primary Ab: 20µg/ml Rabbit Anti-Human NFkB Antibody
Second Ab: 2?g/ml AF488-Linked Caprine Anti-Rabbit IgG Polyclonal Antibody
(Catalog: SAA544Rb11)

[**IMPORTANT NOTE**]

The kit is designed for research use only, we will not be responsible for any issue if the kit was used in clinical diagnostic or any other procedures.