

**PAB052Ge01**

**Polyclonal Antibody to Oxytocin (OT)**

**Organism Species: General**

***Instruction manual***

FOR IN VITRO USE AND RESEARCH USE ONLY  
NOT FOR USE IN CLINICAL DIAGNOSTIC PROCEDURES

9th Edition (Revised in Jul, 2013)

## **[ PRODUCT INFORMATION ]**

**Immunogen:** Oxytocin-OVA

**Clonality:** Polyclonal

**Host:** Rabbit

**Immunoglobulin Type:** IgG

**Purification:** Affinity Chromatography.

**Applications:** WB, ICC, IHC-P, IHC-F, ELISA

**Concentration:** 200µg/mL

**UOM:** 100µg

## **[ IMMUNOGEN INFORMATION ]**

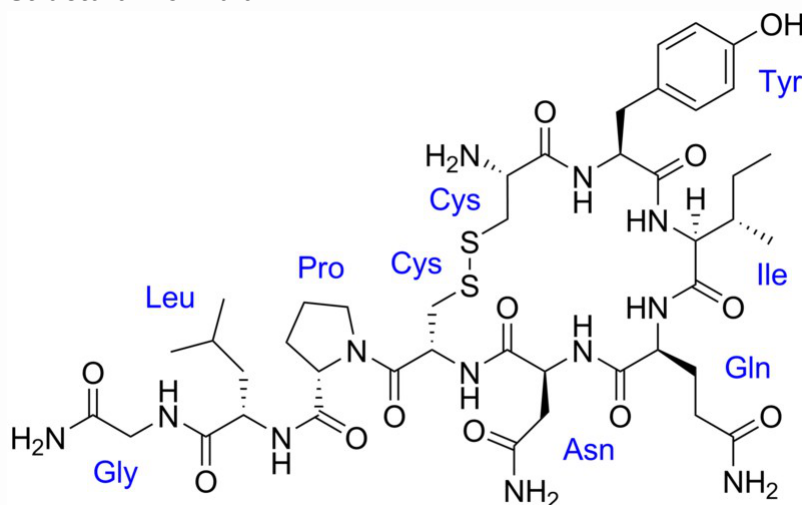
**Immunogen:** Small Molecule, Oxytocin conjugated to OVA.

**Accession No.:** CPB052Ge21

**Chemical Formula:** C<sub>43</sub>H<sub>66</sub>N<sub>12</sub>O<sub>12</sub>S<sub>2</sub>

**Mol. Mass:** 1007.2g/mol

**Structural Formula:**



## **[ ANTIBODY SPECIFICITY ]**

The antibody is a rabbit polyclonal antibody raised against oxytocin. It has been selected for its ability to recognize oxytocin in immunohistochemical staining and western blotting.

## **[ APPLICATIONS ]**

Western blotting: 1:50-400

Immunocytochemistry in formalin fixed cells: 1:50-500

Immunohistochemistry in formalin fixed frozen section: 1:50-500

Immunohistochemistry in paraffin section: 1:10-100

Enzyme-linked Immunosorbent Assay: 1:100-200

Optimal working dilutions must be determined by end user.

## **[ CONTENTS ]**

**Form & Buffer:** Supplied as solution form in PBS, pH7.4, containing 0.02% NaN<sub>3</sub>, 50% glycerol.

## **[ STORAGE ]**

Store at 4°C for frequent use. Stored at -20°C to -80°C in a manual defrost freezer for one year without detectable loss of activity. Avoid repeated freeze-thaw cycles.