

PAL057Mu01

Polyclonal Antibody to PTEN Induced Putative Kinase 1 (PINK1)

Organism Species: *Mus musculus* (Mouse)

Instruction manual

FOR RESEARCH USE ONLY

NOT FOR USE IN CLINICAL DIAGNOSTIC PROCEDURES

13th Edition (Revised in Aug, 2023)

[PROPERTIES]

Source: Polyclonal antibody preparation

Host: Rabbit

Purification: Antigen-specific affinity chromatography followed by Protein A affinity chromatography

Traits: Liquid

Concentration: 0.5mg/mL

UOM: 100µL

Cross Reactivity: Human;Rat;Cavia;Canine;Porcine;Bovine;Caprine;Ovine;Equine

Applications: WB; IHC; ICC; IP.

[IMMUNOGEN]

Immunogen: Recombinant PINK1 (Gly310~Leu566) expressed in *E.coli*

Accession No.: RPL057Mu01

[APPLICATIONS]

Western blotting: 0.01-2µg/mL

Immunohistochemistry: 5-20µg/mL

Immunocytochemistry: 5-20µg/mL

Optimal working dilutions must be determined by end user.

[FORMULATION]

Form & Buffer: Supplied as solution form in 0.01M PBS, pH7.4, containing 0.05% Proclin-300, 50% glycerol.

[STORAGE AND STABILITY]

Storage: Avoid repeated freeze/thaw cycles.

Store at 4°C for frequent use.

Aliquot and store at -20°C for 24 months.

Stability Test: The thermal stability is described by the loss rate. The loss rate was determined by accelerated thermal degradation test, that is, incubate the protein at 37°C for 48h, and no

obvious degradation and precipitation were observed. The loss rate is less than 5% within the expiration date under appropriate storage condition.

[IDENTIFICATION]

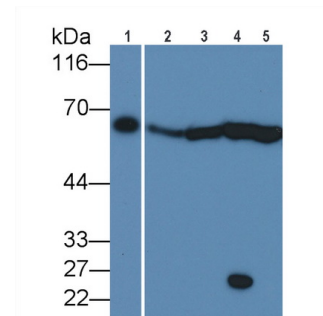
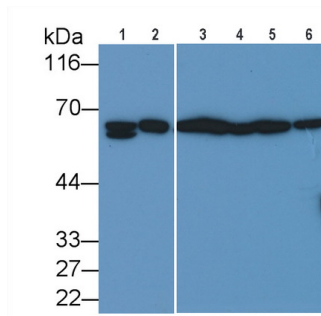
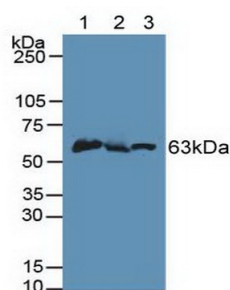
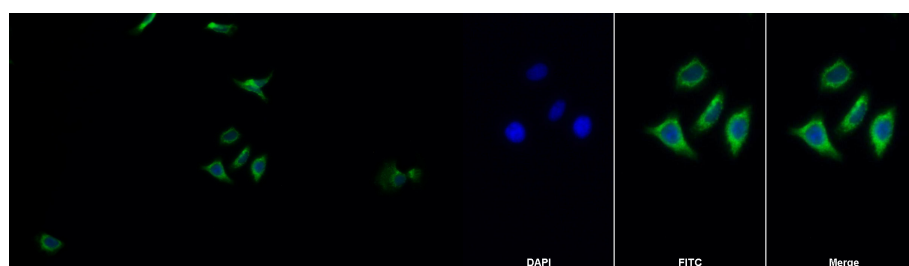


Figure. Western Blot; Sample: Lane1: Mouse Liver Tissue; Lane2: Mouse Testis Tissue; Lane3: Mouse Brain Tissue. Western Blot; Sample: Lane1: Mouse Liver lysate; Lane2: Rat Liver lysate; Lane3: Porcine Liver lysate; Lane4: Porcine Cerebrum lysate; Lane5: Jurkat cell lysate; Lane6: Hela cell lysate. Western Blot; Sample: Lane1: Canine Liver lysate; Lane2: Equine Liver lysate; Lane3: Bovine Liver lysate; Lane4: Cavia Liver lysate; Lane5: Caprine Cerebrum lysate. Primary Ab: 0.3µg/ml Rabbit Anti-Mouse PINK1 Antibody. Second Ab: 0.2µg/mL HRP-Linked Caprine Anti-Rabbit IgG Polyclonal Antibody (Catalog: SAA544Rb19).



FITC staining on IF; Samples: Human Hela cell; Primary Ab: 20?g/ml Rabbit Anti-Mouse PINK1 Antibody. Second Ab: 1?g/ml FITC-Linked Caprine Anti-Rabbit IgG Polyclonal Antibody (Catalog: SAA544Rb18). FITC staining on IF; Sample: Hela cell; Primary Ab: 20µg/ml Rabbit Anti-Mouse PINK1 Antibody. Second Ab: 2µg/ml FITC-Linked Caprine Anti-Rabbit IgG Polyclonal Antibody (Catalog: SAA544Rb11).

[IMPORTANT NOTE]

The kit is designed for research use only, we will not be responsible for any issue if the kit was used in clinical diagnostic or any other procedures.