

PAD834Mu01

Polyclonal Antibody to Phospholipase A2, Group XII (PLA2G12)

Organism Species: *Mus musculus* (Mouse)

Instruction manual

FOR RESEARCH USE ONLY

NOT FOR USE IN CLINICAL DIAGNOSTIC PROCEDURES

13th Edition (Revised in Aug, 2023)

[PROPERTIES]

Source: Polyclonal antibody preparation

Host: Rabbit

Purification: Antigen-specific affinity chromatography followed by Protein A affinity chromatography

Traits: Liquid

Concentration: 0.5mg/mL

UOM: 50µL

Cross Reactivity: Human;Rat

Applications: WB; IHC; ICC; IP.

[IMMUNOGEN]

Immunogen: Recombinant PLA2G12 (Gln26~Leu192) expressed in *E.coli*

Accession No.: RPD834Mu01

[APPLICATIONS]

Western blotting: 0.01-2µg/mL;

Immunohistochemistry: 5-20µg/mL;

Immunocytochemistry: 5-20µg/mL;

Optimal working dilutions must be determined by end user.

[FORMULATION]

Form & Buffer: Supplied as solution form in PBS, pH7.4, containing 0.02% NaN₃, 50% glycerol.

[STORAGE AND STABILITY]

Storage: Avoid repeated freeze/thaw cycles.

Store at 4°C for frequent use.

Aliquot and store at -20°C for 24 months.

Stability Test: The thermal stability is described by the loss rate. The loss rate was determined by accelerated thermal degradation test, that is, incubate the protein at 37°C for 48h, and no

obvious degradation and precipitation were observed. The loss rate is less than 5% within the expiration date under appropriate storage condition.

[IDENTIFICATION]

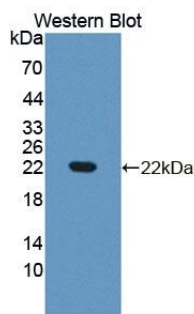
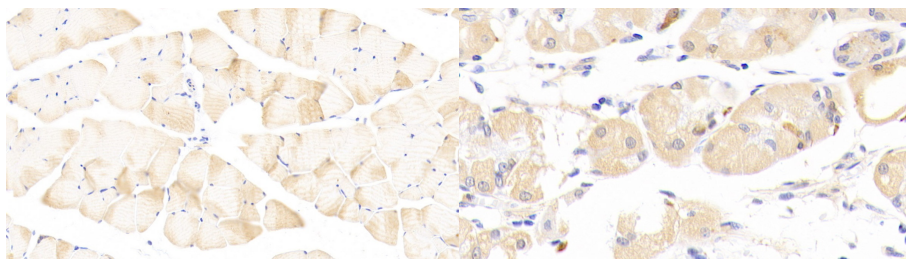


Figure. Western Blot; Sample:
Recombinant PLA2G12, Mouse.



DAB staining on IHC-P; Samples:	DAB staining on IHC-P;
Mouse Skeletal muscle Tissue; Primary	Samples: Mouse Stomach Tissue;
Ab: 20?g/ml Rabbit Anti-Mouse	Primary Ab: 20?g/ml Rabbit Anti-Mouse
PLA2G12 Antibody Second Ab:	PLA2G12 Antibody
2µg/mL HRP-Linked Caprine Anti-	Second Ab: 2µg/mL HRP-Linked
Rabbit IgG Polyclonal Antibody	Caprine Anti-Rabbit IgG Polyclonal
(Catalog: SAA544Rb19)	Antibody
	(Catalog: SAA544Rb19)

[IMPORTANT NOTE]

The kit is designed for research use only, we will not be responsible for any issue if the kit was used in clinical diagnostic or any other procedures.